

2021-2022

# SUMMER Adventure GUIDE

**northern  
sentry**

MINOT AIR FORCE BASE NEWSPAPER  
[WWW.NORTHERNSENTRY.COM](http://WWW.NORTHERNSENTRY.COM)

Advertisements contained herein do not constitute an endorsement by the department of the Air Force of Minot Air Force Base. Everything is available without regard to color, religion, sex or other non merit factor of the purchaser, user or patron.



# We are **OPEN!**

- Bait & Tackle • Green Mountain Grills
- Toro Mowers • T & E Tools



**Tool Surplus Center**  
Best prices on tools in the state!



**Full-Time Outdoor  
Power Equipment  
Mechanic On-Site!**  
Small equipment in need of repair?  
**Call us!**

**COMING SOON!**



**YAMAHA**  
Golf Cars



**1619 HWY 83 NW, GARRISON, ND**  
Intersection of Hwy 83 & Hwy 37  
**701.337.2500**

HOURS: Mon - Fri: 5:30 a.m. - 5:00 p.m.  
Saturday: 5:30 a.m. - Noon



# Medora Musical™

**KICKIN' UP ITS HEELS**

**LIVE AND OUTSIDE  
ALL SUMMER LONG**

**MEDORA.COM**

## PITCHFORK STEAK FONDUE

**STEAKS FONDUED WESTERN STYLE**

**LIVE AND OUTSIDE  
ALL SUMMER LONG**

**MEDORA.COM**





Oak Park, Minot

Welcome	5		
Minot AFB	6		
Minot AFB Outdoor Recreation	8	North Dakota State Parks,	
Pet Friendly Summer Activities	9	Camping & Lakes	34
North Dakota Zoos	10	North Dakota Day Trips	36
Local Parks	12	Explore Rugby	38
North Dakota Arts	14	Indoor Activities	40
North Dakota Historic Sites	16	North Dakota Museums	43
Explore Medora	18	North Dakota Fairs	46
North Dakota Birding	19	North Dakota Outdoor	
North Dakota Gardens	21	Pools & Waterparks	49
North Dakota Scenic Drives	22	North Dakota Golf Courses & Mini Golf	50
North Dakota Trails	25	North Dakota Motorsports	52
Visit Watford City	26	North Dakota Recreational Rentals	56
North Dakota Fishing	29	North Dakota Shooting Ranges	58

## Ask about our **Low Price Guarantee!**

- Drive-through estimate bay
- Fast, friendly & professional service
- I-Car Platinum class
- Drop-off/delivery service
- Lifetime warranty
- 24/7 phone service
- Over 99% customer satisfaction!

### Hours

---

Monday - Thursday: 7:00am - 5:30pm  
 Friday: 7:00am - 5:00pm

After hours contact Cory at 701.833.6695

**Hope you have safe travels,  
but accidents can happen. Call us!**

**701.839.0989**

Address: 524 31st Avenue SW • Minot, ND

**[www.minotsfinest.com](http://www.minotsfinest.com)**

Proudly serving Minot & MAFB for over 30 years!





WELCOME

Downtown Minot, ND

# Welcome to North Dakota

It has been our pleasure to print the Summer Adventure Guide and make it available at no cost to residents planning their summer and fall activities. We have worked hard to highlight as many activities, events and destinations as possible.

Minot and the surrounding areas have a vast array of sights and activities to make the perfect summer vacation. Biking – motorized or peddled, hiking/walking trails, premiere fishing, canoeing, kayaking, boating, golfing, birding, sightseeing and many events and attractions all await you on your next summer adventure. There are also many historical sites around that could turn a weekend fun trip into a historic learning experience.

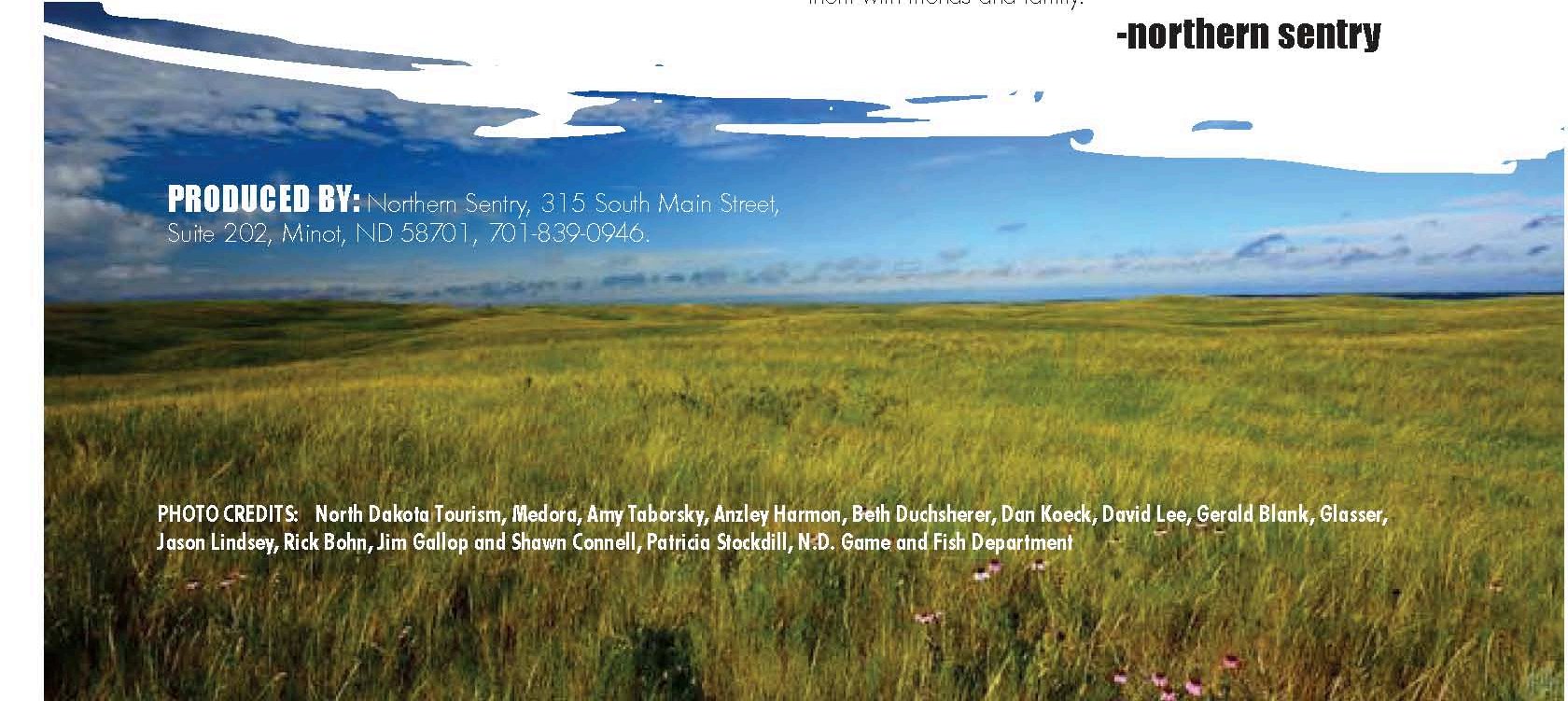
As for those staying close to Minot, the Magic City also has many opportunities for summer fun. Other activities include: Nodak Speedway weekly races, Downtown events, street dances, and much more! As always, please support the businesses that help support the Northern Sentry newspaper and other publications like this guide. They show their support to our military and the base by continuing to advertise with us which helps to make free publications like this possible. Be sure to thank them!

We hope you will save this publication and use it as your guide this summer and fall. We will also be putting the entire guide up on our website, [www.northernsentry.com](http://www.northernsentry.com) and we will have it available all summer for you on racks located in most high traffic areas on the base. Whether you just arrived at Minot Air Force Base, or have been here a while, get out and enjoy! Happy adventuring and be sure to take a lot of photos and share them with friends and family.

**-northern sentry**

**PRODUCED BY:** Northern Sentry, 315 South Main Street, Suite 202, Minot, ND 58701, 701-839-0946.

**PHOTO CREDITS:** North Dakota Tourism, Medora, Amy Taborsky, Anzley Harmon, Beth Duchsherer, Dan Koeck, David Lee, Gerald Blank, Glasser, Jason Lindsey, Rick Bohn, Jim Gallop and Shawn Connell, Patricia Stockdill, N.D. Game and Fish Department





B-52 Stratofortress  
Minot AFB PA Photo

# Things to Love about Minot AFB

ABIGAIL KINDER

As many of us know, Minot Air Force Base tends to get a reputation as one of the less desired duty stations. However, many of the longtime residents and Minot enthusiasts would beg to differ. It's easy to get stuck on base and forget about all of the amazing things that Minot AFB and the surrounding areas have to offer, especially during the summertime. If you take a moment to get out of the house and experience what the base has to offer, Minot can turn into one of the best places to be stationed in the Air Force! Here are a few things to love about Minot AFB:

## 1. The Community

The close-knit, small-town feel is one of the most common reasons why people love Minot AFB. We all have to brave the cold together and we all definitely have to brave the demands of the mission in one way or another. The upside? We have a much smaller, more tightly knit community to lend support. There's something about living in Minot that brings people together.

## 2. The Recreation and Activities

Bases near large cities undoubtedly have a huge variety of activities, restaurants and social scenes. Despite its size, Minot AFB has tons of pastimes to get involved in, between the Spouses Club, 5th Force Support Squadron events, and many other local organizations that hold fun get-togethers for Air Force families. There are car shows for enthusiasts. There is a booming art scene in downtown Minot. There is a giant wildlife preserve just up the road, and there are many unique facilities on base to host every hobby. If there isn't a group that shares your interests yet, it's easy to reach out and find people to create a new one!

## 3. The Sunsets

The sunsets at Minot AFB bring extra special meaning to those unbearably windy days and long winters. Vibrant colors often explode across the sky and cast shadows beneath the towering clouds. With North Dakota's unending plains it's pretty easy to understand why the sunsets look so beautiful, especially in the summertime.

## 4. The Northern Lights

Just as beautiful as North Dakota's sunsets, this unique natural phenomenon is one that many people don't get to experience in their lives. While the Northern Lights are sometimes difficult to see on base due to light pollution or cloudy skies, a quick drive up the highway can offer up an incredible nighttime spectacle. If you're lucky, you'll even be able to catch a glimpse right from your back yard!

## 5. The Bombers

Sure, other bases may have planes and helicopters constantly flying overhead, and some may even catch a glimpse of the historic B-52 Stratofortress from time to time, but Minot AFB is one of very few installations that hosts one of America's longest standing planes full-time. There's something to be said about the feeling that many people get when they're outside doing yard work or driving down the highway when a BUFF roars overhead. It's majestic and impressive, to say the least.

2020 Graduation Parade  
Minot AFB PA Photo

There are a lot more things to love about Minot AFB if you just open your mind, get out, and look for them. As Brunella Costagliola, a former Team Minot resident, once said, "The military is not punishing us by sending us to Minot. On the contrary. The military was showing us how much they value and trust us by sending us here, where they know they will be able to count on you and your commitment to this powerful mission. We're not just military life resilient, but Minot AFB resilient. After all, only the best come north."





# SUMMER FUN AT MINOT AFB!



## FREEDOM FEST 21

2 JULY 2021  
BUD EBERT PARK

FIREWORKS  
GAMES • MUSIC • FOOD  
ACTIVITIES FOR  
THE WHOLE FAMILY!



## MINOT-A-CON

14 AUGUST 2021  
MINOT AFB LIBRARY

SPECIAL GUESTS  
VENDOR BOOTHS  
COSPLAY CONTEST  
GAMES • PRIZES!



## SUMMER READING PROGRAM

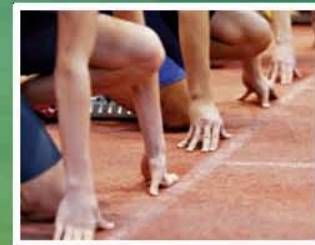
12 JUNE 2021 - 21 AUGUST 2021 • MINOT AFB LIBRARY

READING COLORS YOUR WORLD! WIN PRIZES FOR REACHING READING GOALS AND ENTER THE GRAND PRIZE DRAWING. CHECK OUT THE KICK-OFF PARTY ON 12 JUNE! RECORD YOUR HOURS TO HELP YOUR SQUADRON WIN THE SUMMER READING TROPHY!

## 6TH ANNUAL SUMMER GAMES

6 AUGUST 2021 • FITNESS CENTER

DON'T MISS OUT ON A FUN DAY FILLED WITH SPORTS, ACTIVITIES, AND EVENTS! EACH SQUADRON SUBMITS TEAMS FOR THE EVENTS AND COMPETES FOR POINTS THAT WILL BE TALLIED UP AT THE END. WHO WILL BE THE TRUE SUMMER GAMES CHAMPS?



## • LOOKING FOR MORE TO DO? •

### ESC

PC GAMES  
CONSOLE GAMES  
BOARD & CARD GAMES  
GAMING TOURNAMENTS

### OUTDOOR RECREATION

CAMPING EQUIPMENT  
FISHING EQUIPMENT  
BOATS & CANOES  
YARD GAMES

### RESTAURANTS

KELLEY'S PLACE  
BOMBER BISTRO  
THE B-FIFTY BREW  
ROCKERS BAR & GRILL

VISIT OUR WEBSITE



VISIT OUR FACEBOOK PAGE







April Rooks Photo

Outdoor recreation provides Minot AFB with a variety of recreational equipment to make the most of your time here. From gardening and home care to camping and canoeing, Outdoor Recreation has everything you need to make this summer a blast.

### Lawn and Garden

If you're looking to do some housework, Outdoor Recreation rents out lawn and garden tools to help. They offer ladders, lawn mowers, wheel barrows, rakes, shovels, power washers, and much more at affordable hourly, daily, and weekly rates.

### Camping

Whether you're new to camping or are missing a few essentials, Outdoor Recreation has everything you need to have the best campsite out there. You can rent sleeping bags, two or six person tents, backpacks, ice chests, lanterns, A-frames, and more. Don't want to buy an expensive camper? Rent one for \$75 a day! They even offer camping packages, bikes and trailers to help you get outdoors and experience the best of North Dakota's scenery.

### Boating, Fishing, and Hunting

Visit the on-base pools or go off-base to spend some time doing your favorite hobbies this summer with the help of Outdoor Recreation. They offer jet ski, canoe, kayak, boat, and fishing equipment rentals for a relaxing day at the lake. If hunting is more your speed, they offer a variety of decoys and hunting blinds to help you out.

### Entertainment Equipment

It's easy to host the best block party when you can get your equipment so easily! For every event— family picnics, birthday parties, or work get-togethers— Outdoor Recreation offers tons of rentals to get you started. They have bouncy castles, dunk tanks, corn hole equipment, grills, horseshoes, ladder ball, and even sumo wrestling suits for some extra crazy fun. Tables and chairs are also available for rent.

### Archery Membership

Why not start up a new hobby this summer? Outdoor Recreation sells single and family archery memberships that give exclusive access to the archery ranges and indoor simulator.

### Garden Plots

If you don't have enough space in your yard for a garden, Outdoor Recreation has your back. Rent a garden plot for \$20 for the whole season (Late May-October) and take pride in your hard work with home-grown, fresh food!

### Getaways

Not only does Outdoor Recreation offer equipment, but they have experiences as well. From tandem skydiving and camping trips to escape rooms to whitewater rafting adventures, they offer many affordable trips for Active Duty and dependents. For updates on upcoming trips and events, see their Facebook page.

Outdoor Recreation and the 5th Force Support Squadron work hard to provide Airmen and families with exciting, affordable activities year-round. This summer, get out of the house and experience all that Minot AFB and North Dakota have to offer you! Create lasting memories or find your new outdoor passion with Outdoor Recreation.

For more information on summer rentals, pick up a brochure at their location (146 Missile Ave, Minot AFB), check out their Facebook page at Minot AFB Outdoor Recreation, or visit [www.5thforcesupport.com](http://www.5thforcesupport.com).



Minot AFB Outdoor Recreation  
Abigail Kinder Photo





# Fun for the whole family

ABIGAIL KINDER

Shannon Cook Photo

If you're anything like me, you probably love to take your dog along on every adventure possible. North Dakota's open grasslands, natural wonders and friendly atmospheres make it a perfect place to spend your summer alongside the WHOLE family, including your pets.

Be sure to keep pets leashed and minding their manners in public. Also, don't forget to take the proper precautions and bring plenty of water for hot, active days to prevent overheating.

All parks in Minot Parks District are open to pets but not the designated facilities. Here are a few of Minot's favorite trails and parks that are great for a walk with your furry friend!

- Bison Plant Trail – 7801 54th Ave SE, Minot
- Oak Park – 1300 4th Ave NW, Minot
- Riverwalk Trail – 134-140 6th St SE, Minot
- Roosevelt Park – 1215 E Burdick Expy, Minot
- Woodland Trail – Off of 83 Bypass, Minot

For a quick bite or a refreshing drink, drop by these local businesses with dog-friendly patio space!

- Atypical Brewery – 510 Central Ave E, Minot
- Spicy Pie Minot – 1100 N Broadway, Minot

North Dakota has a plethora of government protected parks. In all North Dakota state parks, pets are not allowed in lodging or on designated swimming beaches. However, pets are allowed in campgrounds, on trails, and even on boats, provided that no trace is left behind and remain leashed in non-designated areas. Here are some ND parks where pets are allowed on trails and in campgrounds:

- Cross Ranch State Park
- Little Missouri State Park – also horse-friendly
- Pembina Gorge State Recreation Area – also horse-friendly
- Sully Creek State Park – also horse-friendly
- Turtle River State Park
- Fort Abraham Lincoln State Park – also horse-friendly
- Fort Ransom State Park – also horse-friendly
- Icelandic State Park
- Beaver Lake State Park
- Fort Stevenson State Park – also allowed on rental boats, provided that no trace is left behind
- Grahams Island State Park – Dog park, no dogs on designated swimming beach but allowed on other shores
- Lake Metigoshe State Park – Dog park, no dogs on designated swimming beach but allowed on other shores
- Lake Sakakawea
- Lewis and Clark State Park – Dog park

Theodore Roosevelt National Park – Leashed pets allowed in the park at campgrounds, on sidewalks, roads, etc. but not allowed on trails. Maah Daah Hey Trail located just outside the park is pet friendly. Horse-friendly on backcountry trails and cross country

Outside of government parks, there are plenty of campgrounds, trails, and areas that allow leashed, well-behaved pets:

- Black Butte Adventures
  - Woodland Resort – pets not allowed on boats, but are allowed in rooms and cabins for a fee
- To find more pet-friendly lodging, visit [ndtourism.org](http://ndtourism.org) and click on "Places to Stay."

## If you dream it, we can help you achieve it.

### Recreational Loans

Not just for RVs! No matter the season, we provide loans for the toy of your choice – jet skis, speed boats, snowmobiles, fishing boats, RVs, ATVs, motorcycles, mopeds, pontoons, campers, golf carts, and more.



**FIRST WESTERN  
BANK & TRUST**



firstwestern.bank  
Member FDIC

701.852.3711

All loans are subject to credit approval. Other fees may apply. Certain loans may require an appraisal. See your local First Western Bank & Trust loan officer for details.





**Tiger Exhibit**  
Minot Parks/Roosevelt Park Zoo Photo

**Chahinkapa Zoo**

Whapeton, ND | 1004 RJ Hughes Drive  
www.chahinkapazoo.org | 701-642-8709

**Hours**

Daily 10AM to 7PM Through Labor Day  
After Labor Day 10 AM to 4 PM

**Admission Fees**

Children Under 2:	FREE
Children (Ages 3-12):	\$8.25
Adults:	\$11.25
Seniors (62+):	\$10.25
Military:	\$10.25

**Dakota Zoo**

Bismarck, ND | 602 Riverside Park Rd  
www.dakotazoo.org | 701-223-7543

**Hours (weather permitting)**

**Summer Hours**  
Late April to Sept: 10 AM to 6 PM daily  
**Winter Hours**  
October to Late April: 1 PM to 5 PM daily

**Admission Fees**

Babies under 2:	Free
Children ages 2-12:	\$7.00
Adults (age 13+):	\$10.00
Seniors (age 60+):	\$9.00

**Red River Zoo**

Fargo, ND | 4255 23rd Ave S  
www.redriverzoo.org | 701-277-9240

**Hours**

**Summer Hours**  
Daily 10 AM to 6 PM

**Admission Fees**

Children Under 2:	FREE
Children (Ages 2-14):	\$8.75
Adults:	\$11.25
Seniors (60+):	\$10.25

**Roosevelt Park Zoo**

Minot, ND | 1219 Burdick Expy E  
www.rpzoo.com | 701-857-4166

**Hours (weather permitting)**

**Summer Hours**  
May 10AM - 6PM  
June-August 10AM - 8PM  
September 10AM - 6PM  
**Winter Hours**  
October - April Monday-Saturday 10AM - 3PM

**Summer Admission Fees**

Children 2 & under:	FREE
Children (Ages 3-12):	\$6.00
Adults:	\$9.50
Military Adults:	\$8.50
Seniors (Ages 60+):	\$8.50
Student (w/ college ID):	\$8.50

**Winter Admission Fees**

Children 2 & under:	FREE
Children (Ages 3-12):	\$3.50
Adults:	\$5.50
Military Adults:	\$4.50
Seniors (Ages 60+):	\$4.50
Student (w/ college ID):	\$4.50



**Red Panda Exhibit**  
Minot Parks/Roosevelt Park Zoo Photo





**AMUR TIGER  
RIVER VALLEY  
NOW OPEN!**

**OPEN**  
**10am-8pm Daily**

FOLLOW US ON FACEBOOK



**1219 BURDICK EXPY EAST MINOT, ND**  
**www.RPZoo.com • 701-857-4166**

**ADMISSION**  
Adults \$9.50  
Military \$8.50 (with ID)  
Kids \$6.00 (3-12yrs)  
2yrs & under FREE





Scandinavian Heritage Park

**Dakota Bark Park**

Minot, ND | 705 Highway 83 Bypass W  
 The Dakota Bark Park features three fenced in play areas as well as benches and convenient bags to pick up after your pooch.

**Green Valley Park**

Minot, ND | Souris Drive & 27th St SE  
 Green Valley Park features a Basketball Court, Tennis Court, Playground and Bathroom Facilities.

**Hammond Park**

Minot, ND | 8th Ave & 3rd St NE  
 Hammond Park features Basketball Courts, Tennis Courts, a Playground, Picnic Shelter and Restrooms.

**Leach Park**

Minot, ND | 2400 Block of 2nd Ave SW  
 Leach Park features Basketball Courts, Tennis Courts, Horse-shoes, Playgrounds, a Picnic Shelter and Bathroom Facilities.

**Moose Park**

Minot, ND | 400 9th St SW  
 Moose Park features a Playground, Picnic Shelter, Sand Volleyball Court, Horseshoe Pit and Bathroom Facilities.

**Oak Park**

Minot, ND | 11th to 14th Block of 4th Ave NW  
 Oak Park features a Playground, Sand Volleyball Court, Splash Pad, Band Shelter, Amphitheater, Trails and Picnic Shelters.

**Old Settlers Park**

Burlington, ND | 305 Park Rd  
 Old Settlers Park features Camping, Baseball, Volleyball, Horseshoes and Fishing.

**Polaris Park**

Minot, ND | 712 26th Ave NW  
 Polaris Park is home to a disc golf course, playground, skate park, picnic shelter and a baseball field.

**Radio City Park**

Minot, ND | 37th Ave SE & 2nd St  
 Radio City Park features a Splash Pad, Basketball Court, Tball Practice Field, Playground, Picnic Shelters, Open Space and Restrooms.

**Scandinavian Heritage Park**

Minot, ND | South Broadway & 11th Ave SW | 852-9161  
 Scandinavian Heritage Center features, Picnic Shelters and Restrooms.

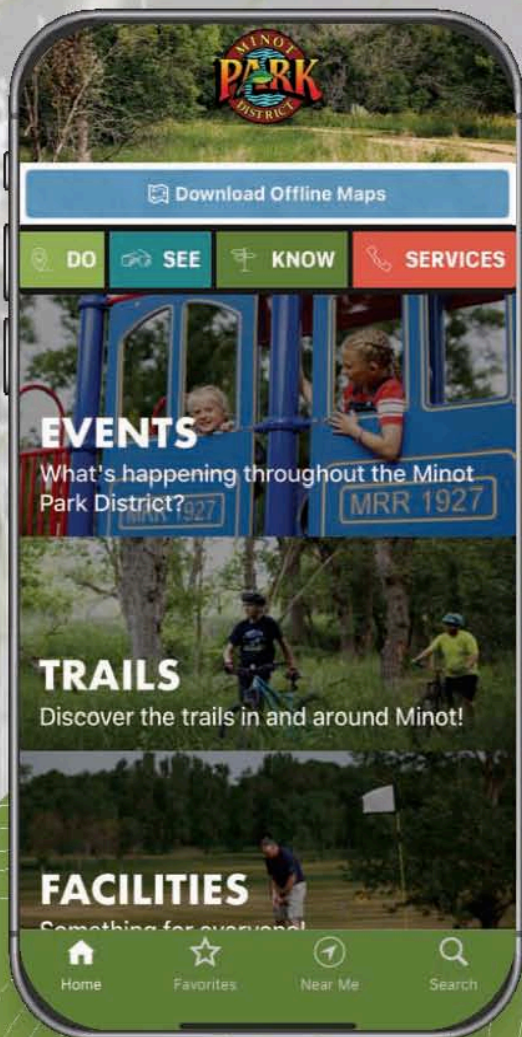
**Roosevelt Park**

Minot, ND | 1215 E Burdick Expy  
 Roosevelt Park features a Zoo, Swimming Pool, Sand Volleyball, Gardens, Picnic Shelters, Band Shelter, Playground, Magic City Express, Tennis Courts, Trails and Fishing Docks.

**Velva City Park**

Velva, ND | 112 2nd Ave W  
 The Velva City Park features Picnic Shelters, Tennis and Horse-Shoe Courts with a Walking Bridge connecting to the Recreation Complex including Softball, Football and Baseball Fields, Outdoor Swimming Pool and Modern RV Hookups.





## THE MINOT PARKS APP

Download the FREE Minot Parks Mobile App today, in the Apple App Store or Google Play

[WWW.MINOTPARKS.COM](http://WWW.MINOTPARKS.COM)







MSU Summer Theatre

### Arts in the Parks

Minot, ND | Oak Park -305 4th Ave NW  
[www.minotarts.org](http://www.minotarts.org)

From mid-June through early August, this program offers something for all ages and interests in a relaxed outdoor setting. On Thursday evenings and Sunday afternoons and evenings, the Minot Area Council of the Arts hosts musical and visual arts presentations.

### Artspace Suite 1 Gallery

Minot, ND | 3 Main St. S Suite 1  
 Hours: Thurs. & Fri. 2:30-5:30pm, Sat. 11am-4pm  
 From mid-June through early August, this program offers something for all ages and interests in a relaxed outdoor setting. On Thursday evenings and Sunday afternoons and evenings, the Minot Area Council of the Arts hosts musical and visual arts presentations.

### Bismarck Art and Galleries Assoc

Bismarck, ND | 422 E. Front Ave | [www.bismarck-art.org](http://www.bismarck-art.org)  
 Hours: Tues. - Fri. 10am-5pm, Sat. 1pm-3pm  
 Art gallery serving the Bismarck-Mandan area. With monthly exhibits of local, regional and national artists provided a wide spectrum of interests.

### Bismarck Downtown Artist Co-op

Bismarck, ND | North 4th Street, Suite 202  
[www.bismarckdac.com](http://www.bismarckdac.com)  
 Hours: Thurs. 12-8pm, Fri. 12pm-6pm, Sat. 10am-4pm  
 Downtown Artist Cooperative is an art gallery and working studio space operated by and for local artists.

### Bismarck-Mandan Symphony Orchestra

Bismarck, ND | 215 North 6th St  
[www.bismarckmandansymphony.org](http://www.bismarckmandansymphony.org)  
 Symphony orchestra serving central and western North Dakota.

### Dakota Stage, Ltd

Bismarck, ND | 412 E Main Ave  
[www.dakotastageltd.com](http://www.dakotastageltd.com)  
 Community theatre serving the Bismarck-Mandan area.

### Fargo Theatre

Fargo, ND | 314 Broadway N  
[www.fargotheatre.org](http://www.fargotheatre.org)  
 Theatre which shows films and live performances and houses the Fargo-Film Festival.

### Fargo-Moorhead Community Theatre

Fargo, ND | 6 Broadway N | [www.fmct.org](http://www.fmct.org)  
 Community theatre serving the Fargo-Moorhead area.

### Fargo-Moorhead Symphony

Fargo, ND | 848 3rd Ave S  
[www.fmsymphony.org](http://www.fmsymphony.org)  
 Symphony orchestra serving the Fargo-Moorhead region.

### Fargo-Moorhead Opera

Fargo, ND | 21 8th Street S. | [www.fmopera.org](http://www.fmopera.org)  
 Opera company serving the Fargo-Moorhead region.

### Greater Grand Forks Symphony Orchestra

Grand Forks, ND | [www.ggfsso.org](http://www.ggfsso.org)  
 Symphony orchestra serving Grand Forks area.

### International Music Camp

[www.internationalmusiccamp.com](http://www.internationalmusiccamp.com)  
 Summer School of Fine Arts, in the International Peace Gardens. Study music, dance, creative writing, painting, drawing, etc.

### James Memorial Art Center

Williston, ND | 621 1st Ave West  
[www.thejamesmemorial.org](http://www.thejamesmemorial.org)  
 Hours: Mon.-Thurs. 9am-2pm, Fri. 1pm-5pm, Sat. Closed, Sun. 1pm-5pm Sept.-Apr. Closed Sun. May-Aug.  
 To share art and culture with the community of Williston, North Dakota while preserving the historic building known as The James Memorial Art Center.

### Mouse River Players

Community Theatre  
 Minot, ND | 115 1st St. SE  
[www.mouseriverplayers.com](http://www.mouseriverplayers.com)  
 Mouse River Players is an all-volunteer community theatre organization. We are dedicated to providing live, quality theatre experiences, at an affordable cost, to the community of Minot and the surrounding rural areas.





**Burning Hill Amphitheatre**  
Chip Henderson Photo

### Medora Musical

Medora, ND | 3422 Chateau Rd  
www.medora.com

Located behind the MSU Dome, MSU Summer Theatre performs multiple plays and musicals each June and July.

### Minot Symphony Orchestra

Minot, ND | 500 University Ave W  
www.minotsymphony.com

A university and community orchestra serving the Minot area.

### MSU Summer Theater

Minot, ND | 500 University Ave W  
www.minotstateu.edu/theatre

Located behind the MSU Dome, MSU Summer Theatre performs multiple plays and musicals each June and July.

### North Dakota Museum of Art

Grand Forks, ND | 261 Centennial Drive  
www.ndmoa.com

Hours: Mon.-Fri. 9am-5pm, Sat.-Sun. 12pm-5pm  
Serves as the official art museum of the State of North Dakota. The Museum's purpose is to foster and nurture the aesthetic life and artistic expression of the people living on the Northern Plains.

### Northwest Art Center

Minot, ND | 500 University Ave W  
www.minotstateu.edu/nac/

Minot State University is home to two art galleries managed by the Northwest Art Center; one located in Hartnett Hall the other in the Library. Best known for its diverse contemporary and traditional art, The Northwest Art Center hosts exhibitions by local, regional, national, and international artists.

### Plains Art Museum

Fargo, ND | 704 1st Ave N | www.plainsart.org  
Hours: Mon. Tues. Wed. Fri. 11am-5pm,  
Thurs. 11am-9pm, Sat. 10am-5pm, Sun. Closed  
Art gallery serving the Fargo-Moorhead region.

### Sleepy Hollow Theatre & Arts Park

Bismarck, ND | 2899 E Divide Ave | www.shst.org  
Summer theatre serving Bismarck-Mandan.



Sleepy Hollow Theatre & Arts Park

### Taub Museum of Art

Minot, ND | 2 N. Main Street | www.taubemuseum.org  
Hours: Tues.-Fri. 10:30am-5:30pm, Sat. 11am-4pm

The Taube Museum offers a full range of art classes throughout the year for kids aged 9 months through adults. There are also Paint the Town Red classes for adults who want to make a night of it with wine and instructed painting. Since there are two galleries, the main gallery & the lower gallery, the Taube is able to accommodate a vast amount of art. They also have a gift shop full of local art.

### The Arts Center

Jamestown, ND | 115 2nd Street SW  
www.jamestownarts.com

Hours: Mon.-Fri. 9:00am-5:00pm, Sat.10:00am-2:00pm  
Jamestown area arts organization. Providing a wide variety of arts activities, exposure and experience for every age group and skill level.





Fort Union Trading Post

**Chateau de Mores Historic Site**

Medora, ND | 3426 Chateau Rd | 701-623-4355

A 26-room, 1883 hunting lodge built by the Marquis de Mores, an entrepreneurial French aristocrat who hoped to find his fortune in the Dakota Territory, overlooks Medora. His meat-packing business failed, but the town he named for his wife, Medora, prospered. The lavish home where he and his wife lived still contains many original furnishings. Eager docents stationed throughout Chateau de Mores State Historic Site offer insights and tours.

**Fort Union Trading Post**

Williston, ND | 15550 ND-1804 | 701-572-9083

Now reconstructed, Fort Union was the most important fur-trading site on the upper Missouri from 1828 to 1867. A self-guided tour, ranger-guided tours and living history programs are available for visitors.

**Fort Totten State Historic Site**

Fort Totten, ND | 417 Cavalry Cir | 701-766-4441

The Fort Totten State Historic Site got its start in 1867 when soldiers built a log structure that in no time was enlarged and expanded to include dozens of buildings. There is a lot more history to explore.

**Fort Seward Military Post**

Jamestown, ND | 605 10th St SW | 701-252-6682

An active military fort from 1872-1877, Fort Seward now houses an interpretive center displaying artifacts excavated from the site's archaeological digs. The grounds are also home to a Veterans' Memorial and scenic views of the James River Valley. Also, the largest United States flag on display in North Dakota flies here when weather permits.

**Knife River Indian Villages**

Stanton, ND | 564 County Rd 37 | 701-745-3309

Explore a reconstructed, furnished Hidatsa earth lodge, 15 miles of trails and a museum. A rich culture thrived along the banks of the Missouri River in west-central North Dakota when Meriwether Lewis and William Clark arrived in 1804. Today, trails weave through the sage and wildflower-dappled prairie to the remains of villages, including one where Sakakawea lived before she joined Lewis and Clark.

**Lewis & Clark Interpretive Center & Fort Mandan Historic Site**

Washburn, ND | 2576 8th St SW | 701-462-8535

Meriwether Lewis and William Clark spent more of their epic journey in North Dakota than in any other state. Stop first at the striking Lewis and Clark Interpretive Center and take in its exhibits about the expedition and area history. Then, continue to a replica of the fort, authentically reconstructed with 800 cottonwood logs, where the explorers weathered the brutal winter of 1804-1805.

**Fort Buford State Historic Site**

Near Williston, ND

Here, where two great rivers meet, people have gathered for thousands of years. At the Missouri-Yellowstone Confluence Interpretive Center, take in the history of a place little changed since Lewis and Clark visited two centuries ago. At nearby Fort Buford, tour original and reconstructed building of the military post where Sitting Bull laid down his rifle.

**Ronald Reagan Minuteman Missile State Historic Site**

Cooperstown, ND | 555 113th 1/2 Ave NE

701- 797-3691

The Ronald Reagan Minuteman Missile State Historic Site consists of two sites telling the story of the Cold War years in North Dakota; Oscar-Zero Missile Alert Facility and the November-33 Launch Facility. They are the last remnants of the 321st Missile Wing, a cluster of intercontinental ballistic missile launch sites that were spread over a 6,500-square-mile area around the Grand Forks Air Force Base. Both played an integral part in the Cold War in North Dakota and the world.

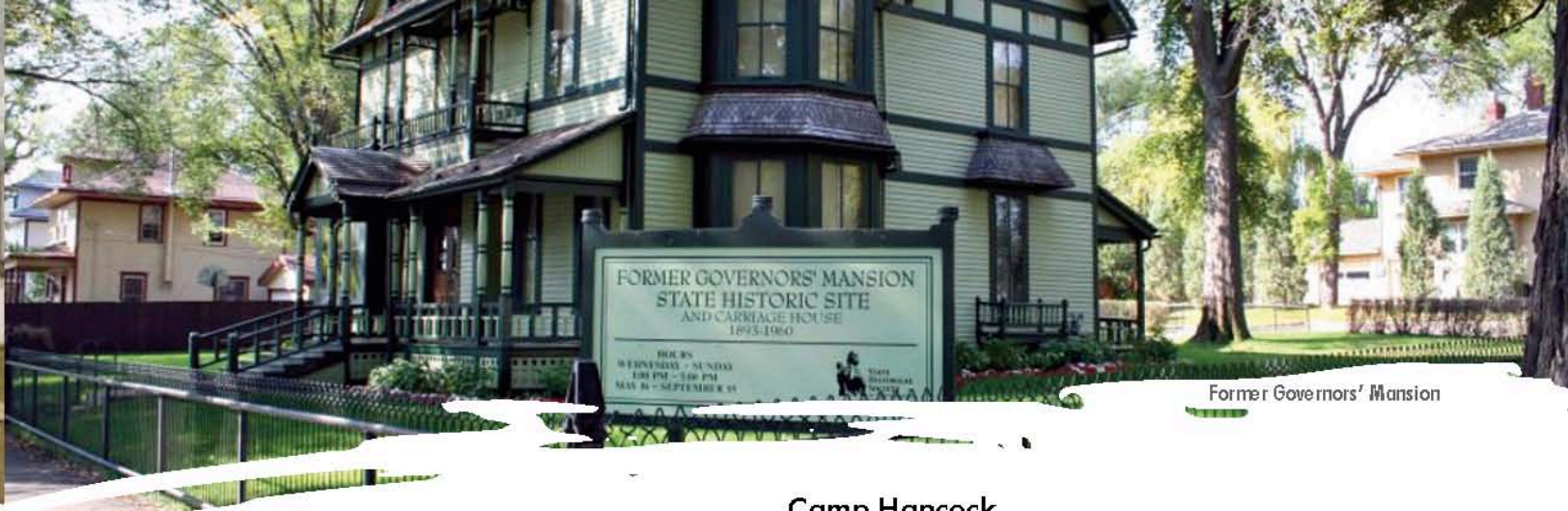
**Fort Abraham Lincoln Custer House & Commissary Bookstore**

Mandan, ND | Fort Abraham State Park

701-667-6340

Guided tour of Gen. George and Libbie Custer's home. Self-guided tour of Fort Abraham Lincoln, home of the 7th Cavalry. Commissary Bookstore houses a large collection books about Custer and the history of Fort Abraham Lincoln.





Former Governors' Mansion

### Fort Abercrombie

Abercrombie, ND

Fort Abercrombie once served as a gateway to the West and the spear point of the army's advance into the Northern Plains. The original guardhouse and the reconstructed blockhouses and stockade attest to the bloody conflict that spilled into the Dakotas from Minnesota. Explore the buildings and visitor center.

### Fort Stevenson Guardhouse

Garrison, ND | 1252A 41st Ave NW | 701-337-5576

The Guardhouse Interpretive Center was reconstructed to tell the story of the frontier military history of Fort Stevenson. Step back in time and experience military life during Frontier Military Days held each year the fourth weekend in June.

### Camp Hancock

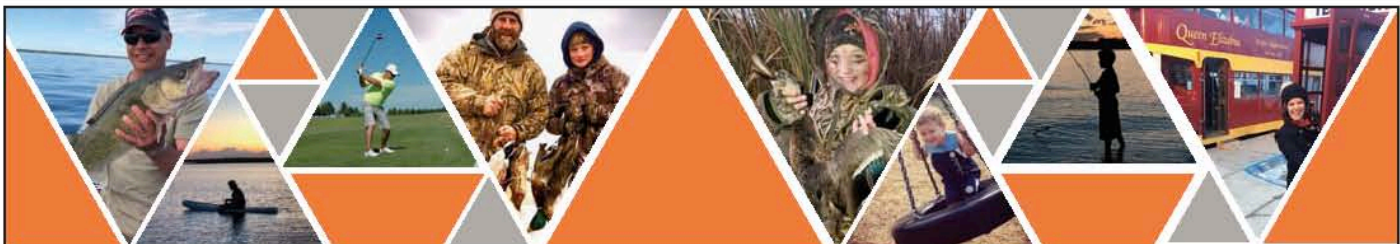
Bismarck, ND

Before Bismarck, there was Camp Hancock. Once a bustling military supply post and later a weather station, Camp Hancock is now home to the oldest building in Bismarck as well as an 1881 church and locomotive from the glory days of steam transportation.

### Former Governors' Mansion

Bismarck, ND

Explore the home of 20 former governors and their families at the Former Governors' Mansion. A lovely staircase leads from the public rooms to private areas where children played, servants worked, and families enjoyed privacy from 1894 to 1960. A carriage house on the lot features exhibits from the time the house was occupied.



# GARRISON

*Located on the North Shore of Beautiful Lake Sakakawea*

*Get Hooked on planning your next adventure!*

GARRISONND.COM 800-799-4242 VISIT GARRISON, ND GARRISON\_ND

*Book a fishing trip today!*



[www.bloemendaalfishing.com](http://www.bloemendaalfishing.com) • 641-420-3214

*New*

**Indoor Fish Cleaning Station**  
West of Garrison on Hwy 37

- Events & Festivals
- Abundant Recreation
  - Fishing, Hunting, Camping, Lake Recreation
- Excellent Shopping, Dining, & Lodging
- 9 Hole Golf Course & Indoor Simulator
- Parks, Museums, & Historical Attractions
- Fort Stevenson State Park & Marina





Teddy Roosevelt National Park Bison  
John Weber Photo

Medora is located in the Badlands of North Dakota. Plan a vacation to this historical town and enjoy the beautiful scenery it has to offer. Theodore Roosevelt National Park is an outdoor enthusiasts dream offering amazing bike and hiking trails, camping and relaxation.

### Family Fun Center

No family trip to Medora would be complete without an afternoon spent at the Family Fun Center! The kids can have a blast on our massive Inflatable Water Slide, catch some air on the bungee jump, scale a kid-friendly rock wall, or soak each other in Water Wars -- a water balloon sling shot stand off!

### Bully Pulpit Golf Course

Some courses impose themselves on the landscape, but at Bully Pulpit Golf Course you'll find yourself dimbing through meadows and woodlands and meandering along the Little Missouri River, fully immersed in the beauty of the landscape all around you! As you dimb out of the shadow of the bluff on thirteen green, our signature holes await. "The Badlands Holes" number 14, 15, and 16 will take you through a rugged fairway gorge. From butte-top tee boxes to a green among a sea of Badlands, this is one golfing adventure you're not soon to forget.

### Pitchfork Steak Fondue

Every evening our chefs load steaks onto pitchforks and fondue them western style. Savor your steak as you overlook the picturesque Badlands from atop a bluff at the Tjaden Terrace. Your steak comes with all of the fixin's. Plus, you'll be serenaded with western melodies performed live by members of The Coal Diggers from the Medora Musical. Don't miss this unique dining experience that was featured on the national television show, Best Of, on The Food Network!

### The Medora Musical

The Medora Musical is the rootin'-tootiest, boot-scootiest show in all the west! There's no other show quite like it. Set in the outdoor splendor of the rugged North Dakota Badlands, this professionally produced, high energy, western-style musical show is proudly dedicated to the legacy of America's 26th President, Theodore Roosevelt, and the time he spent here in the Badlands of the Dakota Territory.

### Teddy Roosevelt National Park

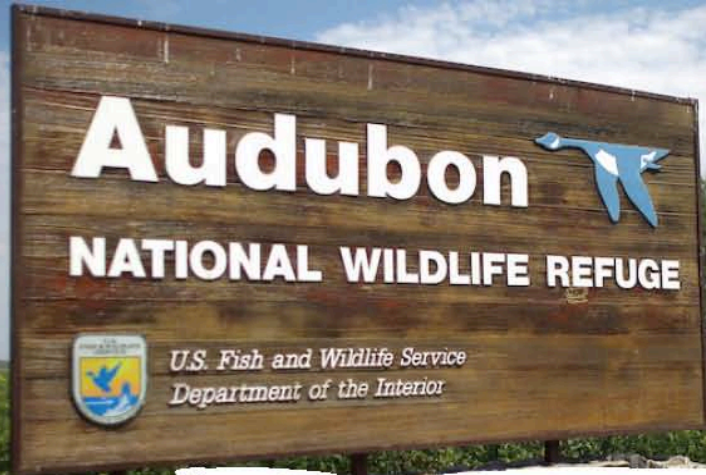
Encompassing over 70,000 acres of breathtaking North Dakota Badlands, there's an adventure for everyone at TRNP. For starters, drive through the south unit of the park on the 36-mile scenic loop through the buttes and Badlands. The winding drive features striking overlooks with unbelievable views, trailheads for 12 different hiking trails (more on those below), interpretive signs about the Park's history and natural wonders, and real prairie dog towns -- plus, you might even get a close up with a buffalo! Experience this unique wilderness through daily Ranger programs which include short talks, guided walks, tours of Roosevelt's Maltese Cross Cabin and evening programs at the campground amphitheater. Or set out on an experience all your own!

### Theodore's Dining Room

Enjoy this fresh culinary experience in a historic and elegant atmosphere. You will be in the well-trained hands of our executive chef. Whether you're craving a scrumptious steak, or a refreshing after dinner drink, stop at Theodore's and treat yourself. All taste buds are treated equal at Theodore's. From fresh garden salads and delectable brussel sprouts, to bacon-wrapped steaks and tantalizing buffalo osso bucco, Theodore's Dining Room has something for everyone!







Audubon National Wildlife Refuge  
ND Tourism Photo

### Audubon National Wildlife Refuge

Coleharbor, ND  
Bird checklist includes 239 birds. 95 of these species nest on the Refuge.

### Icelandic State Park & Gunlogson Nature Preserve

Cavalier, ND  
Contains a variety of natural communities which include lowland woodlands, oak woodlands, wetland thickets, and native prairie.

### Lake Metigoshe State Park

Turtle Mountains – Bottineau, ND  
A summer breeding haven for many species of birds and migrating stopover for others.

### Lostwood National Wildlife Refuge

Kenmare, ND  
A refuge and breeding ground for migratory birds and other wildlife. 26,900 acres of rolling, mixed grass prairie dotted with more than 4,000 wetlands.

### Pembina Hills

Walhalla, ND  
Good habitat for ruffed grouse and wild turkeys. 75 species of breeding birds, including 11 of the state's 14 breeding warblers.

### Souris Loop National Wildlife Refuge

Kenmare, Upham and Foxholm, ND  
While waterfowl, pelicans, tundra swans, grouse and cranes are spectacular, a variety of other species of interest may be found. Birders come from all over the country looking for Sprague's Pipits, and Baird's and Le Conte's sparrows.

### Sully's Hill National Game Preserve

Devils Lake, ND  
The preserve's wooded hills are attractive to birds not normally seen in the open areas of the state.

### Theodore Roosevelt National Park

Medora, ND

This list includes 186 species which have been observed in Theodore Roosevelt National Park plus 22 species that have not yet been observed but are suspected of occurring since they have been seen in the immediate area.

Birding Drives will take you to these remote birding hotspots:

- Arrowwood National Wildlife Refuge
- Chase Lake National Wildlife Refuge
- Lake Juanita
- Missouri Coteau Region
- Edward R. Brigham III
- Alkali Lake Sanctuary
- Jamestown Reservoir
- Jamestown Sewage Lagoons
- James River Valley
- Hawk's Nest Ridge
- Pipestem Reservoir







# Be Inspired.

It's road trip season in North Dakota — time to explore the sights, sounds and flavors of our amazing state. See Theodore Roosevelt National Park and many more favorite attractions. Hear summer concerts or delighted kids on a water slide. Have a burger at a ballpark and savor the taste of summer. Visit us online to plan your next road adventure.

[NDtourism.com](http://NDtourism.com)

NORTH  
**Dakota**  
Be Legendary.







International Peace Garden

### Angelic Garden

Minot, ND | 6200 11th Ave SE | 701-500-7713  
Venture through the Walk Through Victorian Garden or visit the Produce garden and Pick your own produce! This ensures that very little goes to waste and that you produce is as fresh as it can possibly be.

### Dakota Sun Gardens and Winery

Carrington, ND | 955 73rd Ave. NE | 701-674-3316  
Dakota Sun Gardens and Winery has many wines made on site available for tasting and purchase. The wines are also sold at many North Dakota bottle shops. We use as much locally and regionally grown fruits and grapes as possible. The winery is always interested in fruit purchase from other growers. Our extensive gardens and water features exhibit flower and shrubbery displays using natural rock, driftwood, and metal sculpture as accents. Meetings, groups or individuals may be arranged, with prior reservations. Beautiful garden wedding venue. The nominal per person charge includes guided garden tours and wine tastings.

### Elaine's Garden and Guesthouse

Balfour, ND | 3238 Highway  
A beautifully restored 1915 home with a large porch, veranda, theme-decorated bedrooms, completely furnished for all overnight guests as well as hunters. Acres of hunting land and a warm place to clean your birds. Added attraction on the farm site is a restored one-room schoolhouse and beautiful gardens during the growing season.

### Floral Flag Display

International Peace Garden | 10939 Highway 281  
The Floral Flag Display is the only display remaining the same each year. The American red, white and blue, stars and stripes and the Canadian red Maple Leaf are located in the Formal Garden area.

### International Peace Garden

15 Miles North of Dunseith, ND | 701-263-4390  
Since 1932, nestled in the Turtle Mountains of North Dakota and Manitoba, the International Peace Garden is one of the continent's most symbolic and scenic attractions. Thousands of tourists flock to this unique tribute to peace and friendship between the United States of America and Canada. The park plants over 150,000 flowers each year. Main features of the garden include an 18-foot floral clock display, fountains, a chime, and twin 120-foot concrete towers straddling the border with a peace chapel at their base. The Arma Sifton bells were a gift from Central United Church of Brandon, Manitoba, in 1972. The tower was supplied by North Dakota Veterans and dedicated in 1976. Some building remains of the World Trade Center attacks of September 11, 2001, have been placed in part of the garden. The International Peace Garden, "Like No Other Place on Earth," is a perfect and memorable retreat, where people and nature meet.

### Japanese Garden

Grand Forks, ND | 11th Avenue and 34th Street  
701-746-2750  
This lovely and unique garden - featuring the beauty of rocks, water, hills, trees and plants - graces the landscape of Sertoma Park. A gift from the residents of Grand Forks' sister city, Awano, Japan, it commemorates the recovery from the 1997 Red River Valley flood.

### Rainbow Garden & Sculpture Walk

Mayville, ND | 367 3rd St SW (HWY 200)  
Rainbow Garden has seven plots, each demonstrating a different theme. Their goal is that the variety in the gardens gives visitors ideas for their own yards. The seven gardens are The English Garden, The White Garden, The Cottage Garden, The Rock Garden, The Children's Garden, The Herb Garden, and The Labyrinth. Since they have become fairly competent at the craft of gardening, they have graduated to the art of design by concentrating on color, texture, shape and arrangement. They are building a collection of commissioned sculptures from artists around the nation. Currently there are 15 sculptures and poems in the Sculpture Walk.

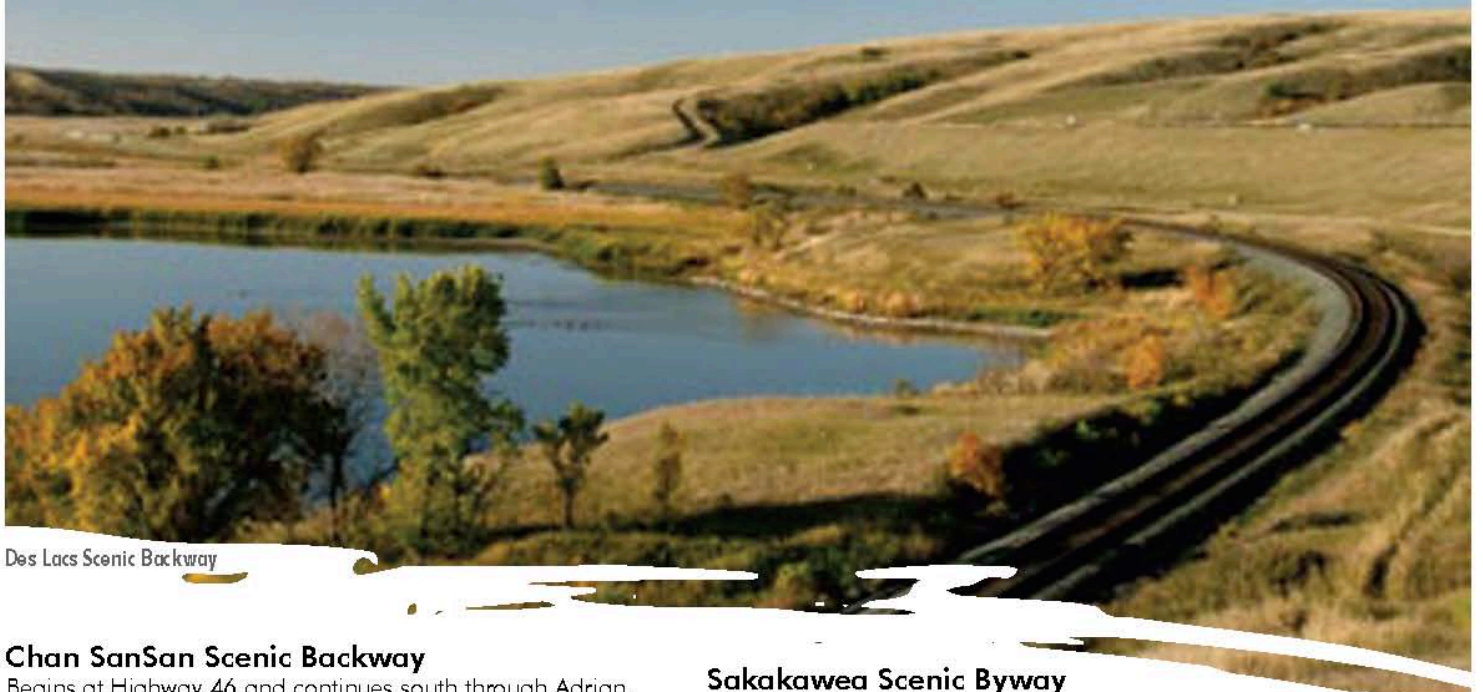
### Sunken Garden

International Peace Garden | 10939 Highway 281  
Interestingly, a series of five uniform terraces extend down to the Sunken Garden area. Located in the center of each terrace are small pools that have connecting water channels that spill into each pool on the next level. So ultimately, water flows from one ornamental pool on each terrace to the next, and finally down to the reflecting octagon shaped pond in the center of the Sunken Garden, where the water is pumped back to the first terrace to begin its round again! Along the mazed walkways of The Sunken Garden are two stone garden houses financed by the North Dakota and U.S. National Homemakers' Clubs. The placement of these original houses marks the Avenues of America and Canada and both leads to their respective countries. Thousands of perennials, flowering shrubs and annuals fill the mosaic-like beds surrounding the focal pond in the Sunken Garden. Within walking distance is the Interpretive Center housing the cafe, retail store, moderate horticultural library and conservatory.

### Northern Plains Botanic Garden

Fargo, ND | 1201 28th Ave N | 701-281-2568  
Open throughout the year from sunrise until sunset and free to the public, the Botanic Garden is an incredible destination for those in the entire region. It consists of 7 separate gardens including the Woodland Garden, Alerus Financial Butterfly Garden, Chrysanthemum Test Garden, Alphabet Garden, Rain Garden, The Turnaround Garden, Seeds of Opportunity Garden and a humming bird patio. The next project slated is the development of the Garden of Mind which is a Japanese-style garden.





Des Lacs Scenic Backway

**Chan SanSan Scenic Backway**

Begins at Highway 46 and continues south through Adrian, Dickey, Grand Rapids and LaMoure to the intersection of the County Line Road.

**Des Lacs Scenic Backway**

Begins at US Highway 52, 6 miles south of Kenmare and continues to the north end of the refuge where it terminates at the intersection of Ward County Road 1.

Points of Interest

- **Historic Danish Mill:** Built in 1902 on a homestead, the Mill was used by area farmers for grinding grains into flour. Now located in the center of the Park on the Square in Kenmare.
- **Des Lacs National Wildlife Refuge Visitor Center:** The visitor center at Des Lacs National Wildlife Refuge Headquarters features displays of local history and native wildlife.
- **Munch's Coulee National Recreation Trail:** From this trail, excellent bird watching opportunities abound.

**Enchanted Highway**

Just off of 94 (Exit 72) approximately 20 miles east of Dickinson, ND. Here you will find six sculptures (The Tin Family, Grasshoppers in the Field, Pheasants on the Prairie, Teddy Roosevelt Rides Again, Geese in Flight and The Deer Family) that are spread out along the 32 miles. The works of art are created by Gary Greff, a native of Regent, North Dakota. Make sure to stop in Regent, ND at the Enchanted Highway Gift Shop, the Hettinger County Historical Museum and the Enchanted Castle.

Killdeer Mountain Four Bears Scenic Byway

Begins north of Manning on Highway 22 through Killdeer to Highway 23, then east to New Town.

**Old Red Old Ten Scenic Byway**

Begins at the Mandan Depot on Main Street in Mandan and travels west along Old Highway 10 to Dickinson. There is a 12-mile section of gravel road near Almont known as the Curlew Loop. Caution: 12-foot railroad underpass 11 miles west of Hebron.

**Rendezvous Region Scenic Backway**

Begins on Highway 55 in Vang proceeding east to Walhalla, turning southeast for 22 miles traveling past Icelandic State Park to Highway 5 ending in Cavalier.

**Sakakawea Scenic Byway**

This byway highlights fantastic views of the Missouri River Valley along with some of the state's most outstanding Lewis and Clark destinations. Visitors are able to follow the course of this great journey and discover the history and culture of the people who lived in the rolling hills and wooded valleys of the Missouri and Knife Rivers. Begins at Highway 200A from Washburn to Stanton.

Points of Interest

- **Fort Clark State Historic Site:** protects the archeological remains of a large earth lodge village, cemetery, two fur trade posts, and was the scene of devastating smallpox and cholera epidemics that decimated most of the inhabitants of a Mandan and later an Arikara Indian village.
- **Fort Mandan Historic Site:** The reconstructed Fort Mandan rests in the riparian forests of the Missouri River and features refurbished rooms filled with the equipment of the Lewis & Clark Expedition. On-site interpreters provide programs and year-round tours of Lewis & Clark's 1804-1805 wintering post.

**Sheyenne River Valley National Scenic Byway**

Begins at Getchell Township Hall on Barnes County Highway 21, along Highways 17 and 19, through Valley City, proceeding on Highway 21 to Ransom County Highway 13 to Lisbon. Standing Rock National Native American Scenic Byway Begins at the Cannonball River and continues south along Highways 1806 and 24 to the South Dakota state line.

Theodore Roosevelt National Park North Unit Scenic Byway This byway provides the colorful North Dakota Badlands as a scenic backdrop with its sweeping vistas of one of the last remnants of wilderness in the Northern Great Plains. Theodore Roosevelt National Park memorializes the 26th president for his enduring contributions to the conservation of our natural resources. Visitors are provided a unique opportunity for wildlife viewing. In the park you will find open prairie, hardwood draws, bison, other wildlife, and the Little Missouri River. Begins 15 miles south of Watford City from US Highway 85 and proceeds west on the scenic drive through the North Unit of the park.

**Turtle Mountain Scenic Byway**

Begins 3 miles north of Rolla to St. John and proceeds west on County Highway 43 to State Highway 281. Continues west on State Highway 43 until it terminates on State Highway 14.



# Jerome's

## COLLISION CENTER



### Your Collision Experts

#### What We Do



Vehicle Collision Repair



Semi-Tractor Body Work



Vehicle Detailing



Boat & Fiberglass Repair



RV Body Repair



Nationwide Lifetime Warranty

Don't Settle for Less, **Choose Jerome's**

 (701) 852-5126 | (800) 761-1160 | **Fax:** (701) 839-4488

2705 North Broadway, Minot, ND 58703

 Connect with us! [jeromescollision.com](http://jeromescollision.com)



TAP INTO THE

# ENERGY!



Come feel the energy and excitement of the Williston area, just two hours west of Minot on Highway 2. Explore unique shops and more downtown, or find extraordinary outdoor fun like fishing where the Yellowstone and Missouri rivers meet. Call or visit online to plan your adventure!

visit *Williston*  
—ND—

VisitWilliston.com

800-615-9041





Lake Metigoshe

### Beaver Lake State Park

Trails: Beaver Lake Nature Trail, Old Settlers Trail, Woodland Trail, Moraine Loop Trail, Lake View Loop Trail and Rolling Prairie Loop Trail. Beaver Lake State Park's non-motorized trail system covers 5.34 miles in a series of loops and several connecting segment trails that are open for hiking and biking. The Beaver Lake Nature Trail is a self-guided nature trail open to hiking only. Most of the trail system surface is either grass, dirt or hard-packed single-track, with manageable grades with only a few steeper sections.

### Bison Plant Trail

This is Minot's little jewel, located a few miles east of Minot off of Highway 52. The 3.5 mile trail is now entirely comprised of single track trail looping through a beautiful stretch of city owned wooded land. It offers excellent shade and varies from fast hard pack dirt cruising sections to tight technical sections. Its location just outside of town makes it a great place to go pump out a couple laps after work. There is also a shorter variation of the trail (2.1 miles) used for running. All trails are well maintained.

### Black Butte Adventures Trail

Located near Sawyer, this is a beautiful ride that traverses pasture land above the river and climbs over Black Butte. The trail is a tight single track with occasional rock technical sections, and one muddy water crossing. The main loop is about 5 miles and there is a secondary 3 mile loop across the cattle guard in the southwest.

### Burlington Walking Path

The Burlington Walking Path is a paved trail through rural, rolling countryside that connects the cities of Minot and Burlington in north-central North Dakota. It parallels County Road 15 for most of its length, which becomes 4th Avenue as the trail approaches Minot.

### Cross Ranch State Park

Trails: Matah "River" Trail, Ma-ak-oti "Old Village" Trail, Cottonwood Trail/Gaines Trail, Levis Trail and TNC Self-Guided Prairie Trail. Situated along the west bank of the Missouri River, the 589-acre Cross Ranch State Park and adjacent 6,000-acre Cross Ranch Nature Preserve are one of the few areas in North Dakota to offer a true primitive outdoor experience. Over 16 miles of trail wind through Cross Ranch State Park and Nature Preserve. Trail posts identify the trail names.

### Fort Abraham Lincoln State Park

Trails: Scouts Trail System, Little Soldier Loop Trail, Young Hawk Interpretive Trail, Bob Tailed Pass, Little Sioux Trail, Bloody Knife Trail and Nature Trail. Fort Abraham Lincoln State Park's non-motorized trail system covers approximately 6.75 miles in a series of loops and several connecting segment trails that are open for hiking, biking and horseback riding. Most of the trail system surface is either grass, dirt or hard-packed single-track, with manageable grades with only a few steeper sections.

### Fort Ransom State Park

Trails: North Country National Scenic Trail, Redetzke Ridge Trail, Pederson Hills Trail, North Fork Trail, Nelson 80, Firebreak Trail, Little Twig Nature Trail, Ridgeline Nature Trail, Valley View Trail, Oak Ridge Trail, Meadow Run Trail, Riverside Trail and Southgate Trail. Fort Ransom State Park's non-motorized trail system covers over 14.64-miles in a series of loops, trails and connecting segment trails most which are multi-use and are open for hiking, horseback riding, biking, cross country skiing and snowshoeing. The majority of the trail system surface is either grass, dirt or hard-packed single-track, with manageable grades with only a few steeper sections.

### Fort Stevenson State Park

The park offers 8.13 miles of non-motorized, multi use trail which provides a pleasant place to bike, walk, jog and cross country ski. This includes a .22 mile interpretive trail and a .48 mile arboretum trail.

### Grahams Island State Park

Grahams Island State Park has two trails for hiking or walking. One is a 1.6 mile loop that can be accessed by the Sivert Thompson activity center. The other is a .5 mile loop located on the north end of the west campground.

### Icelandic State Park

A 3/4 mile self-guided interpretive trail begins at the Gunlogson Homestead site and loops along the south side of the Tongue River. Other trails continue throughout the 200 acre Gunlogson Nature Preserve and natural wooded area along the river. Foot bridges provide easy crossing of the Tongue River and the area's many natural springs. The majority of this 3 mile trail system is groomed and open in the winter for cross-country skiing. A 6 mile paved bike and hiking trail connects the park to Cavalier and to the golf course just west of the park.

### Lake Metigoshe State Park

Trails: Old Oak Trail and Multi-Use Trails. Nestled in the scenic Turtle Mountains, on the shores of Lake Metigoshe, Lake Metigoshe State Park was constructed by the Works Progress Administration (WPA) in the 1930s and is one of the most popular year-round vacation spots in North Dakota.

### Lake Sakakawea State Park

Several multi-use trails in the park are perfect for hiking, biking, cross-country skiing and snowshoeing. Hikers are encouraged to take in the scenic beauty of the completed segments of the North Country National Scenic Trail found in this park.

### Lewis and Clark State Park

Trails: Prairie Nature Trail, North Trail System, South Trail System and Shoreline Trail

On the north shore of Lake Sakakawea, Lewis and Clark State Park is situated among the rugged buttes of the North Dakota Badlands. The park is named for the Corps of Discovery explorers Meriwether Lewis and William Clark. The expedition camped nearby on April 17, 1805.





Sully Creek

### Little Missouri State Park

Little Missouri State Park has over 47 miles of trails for horseback riding and hiking. Horse corrals are available for individuals and groups bringing in their own horses, and several artesian wells are located within the park for horse watering purposes. Trails are marked at major interestions.

### Sully Creek State Park

Horseback riders, mountain bikers, and hikers have access to the 120-mile long Maah Daah Hey Trail, which traverses the Little Missouri National Grassland and to the 50 plus mile long Maah Daah Hey II Trail. Those using the trail should carry adequate potable water for drinking. In the early spring or during high flows, canoeing the Little Missouri River also offers a unique perspective of the Badlands.

### Tatman Branch Trail

The trail begins on the outskirts of Minot and travels north for 10 miles along the former Tatman Branch Line. The path parallels 27th Street NE for most of its length, offering a straight, flat route through the countryside that ends at Minot Gate, the main entrance to the military base.

### Turtle River State Park

Turtle River State Park has a system of mountain biking, hiking, and interpretive trails.

### Upper Souris Wildlife Refuge

Trails: Oxbow Nature Trail, Overlook Nature Trail, Cottonwood Nature Trail and Centennial Wildlife Nature Trail  
 Located 30 miles NW of Minot, the Upper Souris National Wildlife Refuge has five nature trails for walking and hiking, two canoe trails and one auto tour route.

### Long Distance Biking Routes

With its low traffic and excellent country roads, North Dakota is great for cross-country bike trips. For particularly scenic treks, check out North Dakota's designated scenic byways and backways on the N.D. State Highway Map. Before riding, check at area Chamber of Commerce offices, state and federal parks, state and federal Forest Service offices and local bike shops for their recommendations on the best routes. Some scenic areas to ride in North Dakota include:

- Little Missouri National Grassland
- Theodore Roosevelt National Park
- Lewis and Clark Trail (State highways 1804 and 1806)
- Pembina Gorge/Walhalla Area
- Turtle Mountains/Lake Metigoshe
- Fort Ransom State Park
- Sheyenne National Grassland

# Visit Watford City

ABIGAIL KINDER

Searching for an all-around destination for your summer adventure? Look no further than Watford City, North Dakota! Watford City is located in McKenzie County, about 2.5 hours west of Minot Air Force Base. Whether you're looking for a cultural experience, fun for the whole family, or an outdoor adventure, Watford City has it all.

The historic city is nestled in western North Dakota near some of the state's most popular attractions, including Theodore Roosevelt National Park and the Little Missouri National Grasslands. Tobacco Gardens Resort and Marina offers local camping, kayak rental, fishing and boat access. Walk or bike the Maah Daah Hey Trail for a taste of North Dakota's majestic terrain.

Take a day off to explore downtown Watford City and you'll find a variety of local shops with hand crafted gifts and North Dakota treasures. The Wild West Water Park has water slides, a splash pad, and a variety of swim activities for some family fun on those extra hot days. Grab a bite to eat and settle down with a drink at one of their unique restaurants, coffee shops, or even the local brewery.

For the history buffs, Watford City has many attractions nearby for visitors to learn about North Dakota's rich past. The McKenzie County Heritage Park sits on six acres of land and includes historic buildings from all over the state and is now open year-round. Nearby, the Fort Union Trading Post National Historic Site and Fort Buford State Historic Site offer a glimpse into the history of life on the frontier with original structures and informative (and sometimes interactive) exhibits. Take a tour of a Native American earth lodge and learn more about North Dakota's Mandan, Hidatsa, and Arikara people at Knife River Indian Villages National Historic Site. At the nearby Fort Berthold Indian Reservation, you can hear stories from cultural interpreters and even spend the night in an earth lodge to experience the heritage of North Dakota's indigenous peoples.

To learn more about all Watford City and McKenzie County have to offer and even take a virtual tour, visit [www.visitwatfordcity.com](http://www.visitwatfordcity.com). Plan your trip Watford City today to experience small town charm with big-city attractions!



Watford City  
 Watford City Photo



# Get Some Distance



Muddy your bike tires on the Maah Daah Hey Trail. Put some miles on your hiking boots in the pristine Theodore Roosevelt National Park.

When you're ready to unwind, kick back with take-out, fine dining, cocktail bars and a room at one of our plush hotels.

## WATFORD ★ CITY ★ *The New Frontier*

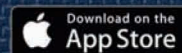
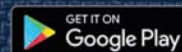
[VisitWatfordCity.com](http://VisitWatfordCity.com)

800 Deluxe Rooms

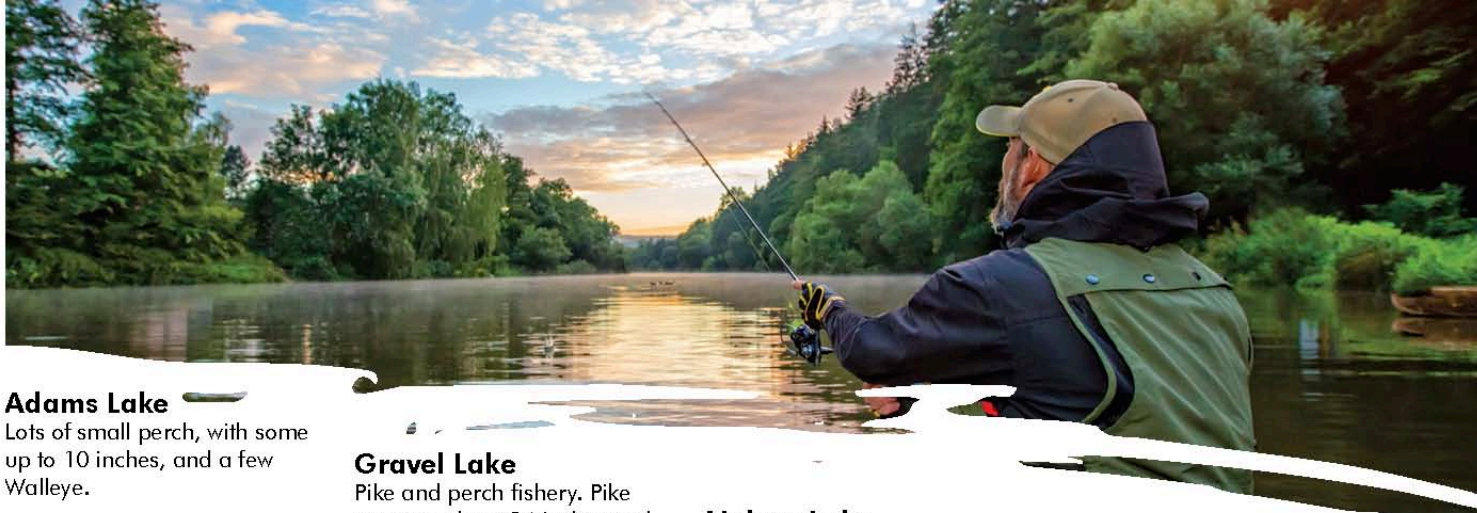
33 Restaurants

**Virtual Tours!**

Download our *Experience Watford City* app and Discover the New Frontier.







**Adams Lake**  
Lots of small perch, with some up to 10 inches, and a few Walleye.

**Arnegard Dam**  
Primarily pike, with some larger fish. Some adult perch and an abundance of black bullhead. Stocked with adult catfish in 2016.

**Bisbee Dam - Big Coulee**  
Pike, walleye, perch, bluegill and crapple. Most walleye longer than 16 inches. Good pike numbers with some up to 6 pounds. Most perch are small.

**Boundary Lake**  
Decent number of 6-8 inch perch.

**Coal Mine Lake**  
Good number of northern pike, with some larger fish.

**Crooked Lake**  
Good number of nice sized pike and walleye, with some smaller perch.

**East Park Lake**  
Decent walleye numbers, with some larger fish. Fair number of small to medium sized yellow perch. Bluegill population has increased in recent years.

**Epping-Springbrook Dam**  
Fair populations of northern pike, walleye and perch. Black bullhead abundant.

**Fox Lake**  
Good walleye and perch populations, with larger fish present.

**Froelich Dam**  
Walleye and pike abundant. Yellow perch, crappie, bluegill and largemouth bass present.

**Gravel Lake**  
Pike and perch fishery. Pike average about 24 inches and most perch under 10 inches.

**Green Lake**  
Quality walleye and perch fishery, with a low number of pike.

**Harmony Lake**  
Good number of bluegill, with some quality sized fish. Stocked annually with rainbow trout.

**Hatchery Kids Pond**  
Good shore fishing for early season trout.

**Jasper Lake**  
Walleye up to 25 inches abundant and a fair number of large perch present.

**Juanita Lake**  
Some pike available, but not high numbers. Bullhead abundant.

**Kettle Lake**  
Primarily a rainbow trout fishery, but also contains some brown trout and largemouth bass. Small perch abundant.

**Kraft Slough**  
Walleye and perch abundant.

**Lightning Lake**  
A quality trout fishery, with some large fish. Stocked annually with rainbow trout.

**Little Heart Pond**  
Catchable sized rainbow trout stocked in spring.

**McPhail Lake**  
Small perch abundant and low numbers of walleye present.

**Mirror Lake**  
Stocked fry walleye in May.

**Nelson Lake**  
The best largemouth bass lake in the state. Abundant quality sized bluegill and crappie.

**Northgate Dam**  
Good populations of walleye, rainbow trout and bluegill. Fair number of black crappie and a few largemouth bass.

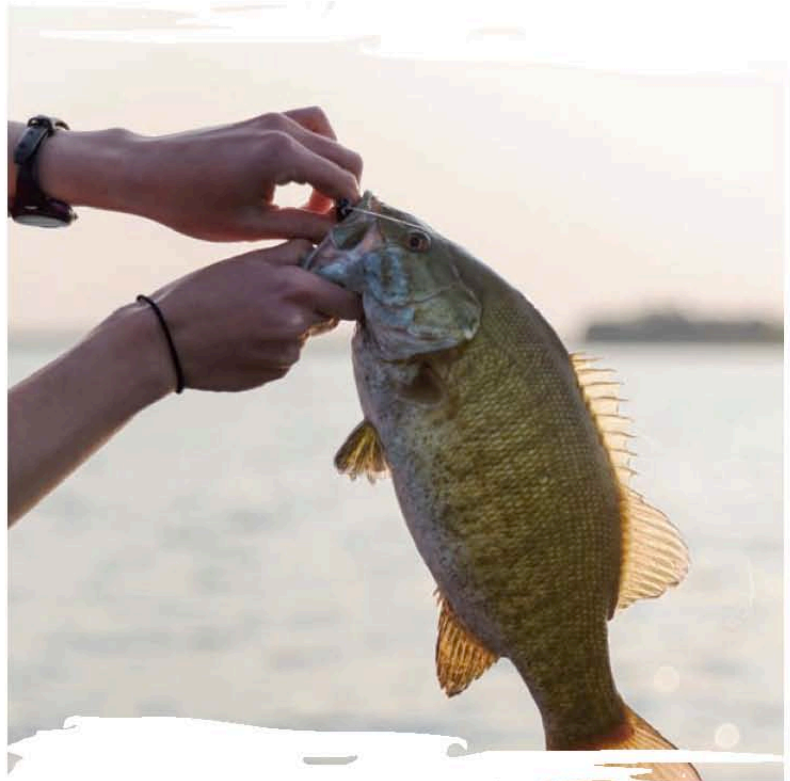
**Odland Lake**  
Abundant perch up to 1 pound & bluegill up to 1 pound. Abundant young walleye, with some up to a quarter-pound.

**Painted Woods Creek**  
Fair number of northern pike.

**Paris Lake**  
Fair number of perch various sizes.

**Rafferty Lake**  
Walleye up to 18 inches abundant.

**Round Lake**  
Good number of pike and some walleye.



Smallmouth bass can be an underappreciated fish among many North Dakota anglers because of their passion for walleye but they're missing out on a lot of action and good eating. Try some of the McClusky Canal lakes, Lake Audubon, or rocky points on the bays of the east end of Lake Sakakawea.

N.D. Game and Fish Department Photo





# WOODLAND R E S O R T

Devils Lake's only full service lakeside resort and fishing destination facility



701-662-5996

[WOODLANDRESORT.COM](http://WOODLANDRESORT.COM)



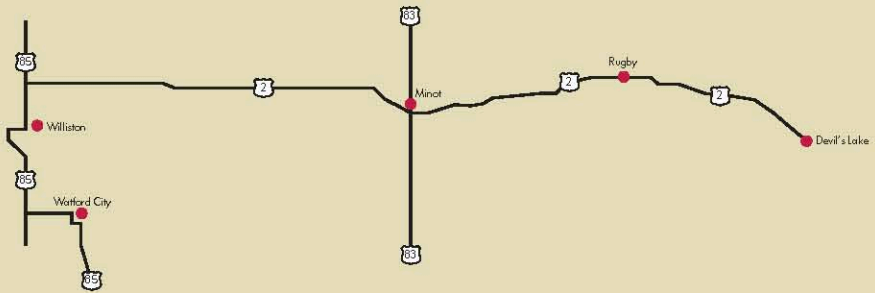


Home of  
**ECONOMY**

Your Summer  
Adventure  
Headquarters



Expert advice  
on where they are biting,  
and what they are using.



**MINOT**  
Highway 83 South  
At The 2 & 52 Bypass

**WILLISTON**  
Million Dollar Way

**WATFORD CITY**  
113 6th Ave SE Suite 5200

**RUGBY**  
225 US Highway 2

**DEVILS LAKE**  
1205 Hwy 2 East





## Let's Fish

PATRICIA STOCKDILL

Fishing off docks and piers for bluegill on Lake Metigoshe is popular in the summer.

N.D. Game and Fish Department Photo

It's almost like stepping into a kaleidoscope of colors and shapes – the wide array of fishing tackle and presentation options lining fishing sections in stores across North Dakota.

It doesn't matter if it's a local convenience store or a diverse business like Home of Economy, summer fishing and its tackle are popular. While many residents hone in on walleye for their great taste, several other species offer options.

The N.D. Game and Fish Department manages more than 400 lakes across the state and here are some tips for area fishing adventures this summer:

### BASS, LARGEMOUTH:

When it comes to largemouth bass and their pension for warm water, in North Dakota that means Oliver County's Nelson Lake. "All of Nelson Lake has warm water in it compared to our other lakes," described Game and Fish Department North-central District Fisheries Supervisor Jason Lee.

Five miles east and three miles south of Center, the man-made lake has warm water year-around with abundant forage so warm water loving largemouth bass grow faster there than other lakes. Its natural reproduction is supplemented periodically with stocking, Lee added. Try traditional bass techniques for good numbers of largemouth in a variety of sizes.

Kota-Ray Dam southeast of Ray in Williams County might be a pleasant surprise for anglers in search of nice largemouth bass, as well.



Oliver County's Nelson Lake – and its year-around warm water – provide what could be considered North Dakota's most consistent large mouth bass fishery. N.D. Game and Fish Department Photo

### BASS, SMALLMOUTH:

Feisty smallmouth bass are most often found in Lake Audubon, Lake Sakakawea, Hecker's Lake, any of the chain of lakes associated with the McClusky Canal, and the canal itself.

The McClusky Canal and its lakes - Hecker's, New Johns, East Park, and West Park Lakes - feeds from the east side of Lake Audubon. Accessing the canal itself can be difficult, Lee advised, because of its steep, rocky edges. Best shore-fishing access points are off road bridges with a fishing pier on the canal northwest of Hecker's Lake, which is southeast of Mercer in Sheridan County.

Lake Audubon is on the east side of U.S. Highway 83 crossing the Lake Sakakawea embankment. The lake has multiple access points and fishing piers, making it excellent for shore-fishing.

Lake Darling northwest of Minot on the Upper Souris National Wildlife Refuge might offer up a smallmouth bass surprise for some anglers but remember that as a wildlife refuge, anglers should follow its special regulations such as no camping.

Smallies prefer gravelly substrate and rocky points with crayfish a popular food source. Lee suggests anglers target rocks and riprap from shore, casting small jigs or crankbaits away from shore or pitching small crankbaits towards shore when boat fishing. He also uses crankbaits as large as No. 9 or 11.

Lake Sakakawea also has smallmouth bass. Try areas with gravel and rocky points on the east end of the "Big Lake", such as areas around Sakakawea State Park.

### BASS, WHITE:

Devils Lake is the state's "go to" white bass location. The 2015 age class is currently the most abundant population in the lake and fish could range between 14 and 16 inches. However, the upper end of Lake Sakakawea has its share of white bass at times and they love minnows in the spring.

### BLUEGILL:

When it comes to this colorful panfish, head north, anglers, head north...to Lake Metigoshe, that is. Tucked in the Turtle Mountains of Bottineau County about 14 miles northeast of Bottineau, Metigoshe's mix of sub-emergent and emergent aquatic vegetation allows bluegill to escape predation. Its good water quality coupled with ample food means the lake has a nice mix of sizes and age classes.

While Lake Metigoshe is the region's premier bluegill lake, it's not the only one. They're also stocked in a few other lakes and while populations aren't strong, "they're slowly expanding," Lee explained. Try Long Lake (also in Bottineau County), Rice Lake northeast of Ryder (Ward County), South Carlson Lake southwest of Minot, Brush Lake three miles north of Mercer, Hiddenwood Lake south of Makoti, or even Nelson Lake.

Don't look for the numbers of fish from those lakes one might find in Lake Metigoshe but they could provide an occasional nice-sized bluegill, in part because lakes such as Rice, South Carlson, and Brush were stocked with adults a few years ago.





**The fishing pier at Lake Audubon's East Totten Recreation Area provides easy access to shore-fishing opportunities.**

*Patricia Stockdill Photo*

While not nearly as abundant as bluegill in Metigoshe, anglers going to Blacktail Dam northwest of highways U.S. 2 and U.S. 85 junction or Northgate Dam northwest of Bowbells in Burke County could also encounter some success. Smishek Lake northwest of Powers Lake has abundant small bluegill numbers – maybe even a keeper hiding somewhere.

Try a bobber with small hook and nightcrawler pieces from shore, casting along the edge of vegetation and letting the bobber float, Lee offered, or casting light jigs and worm pieces and reeling towards shore from boats.

about 2 to 5 pounds, sometimes 7 pounds. “A 10-pounder is pretty big, especially for Lake Sakakawea,” Fryda described.

Rainbow smelt are the forage of choice for virtually all of Lake Sakakawea’s predator fish and channel catfish are no exception. Fryda suggests anglers try any type of bottom rig with dead smelt.

The best tailrace fishing typically begins in June extending into the fall. The cold water of the tailrace produces excellent eater-sized 2- to 3-pound catfish. Try shore-fishing along the boat ramp or take the road east of Garrison Dam National Fish Hatchery to the large pool of water below Garrison Dam spillway where larger catfish may lurk.

Use dead smelt or drift with three-way swivels if boat fishing in the tailrace.

**CRAPPIE:**

While some areas of the upper end of Lake Sakakawea offer crappie activity, two locations in the region could be considered “go to” spots – Trenton Lake on the south side of the community of Trenton near Williston and Nelson Lake. Williston’s John Shunk suggests casting slip bobbers with small jig and minnow or casting traditional crappie rigs. Early season is the best time for Trenton Lake crappie.

Try shallow water of bays for Lake Sakakawea crappie but don’t neglect Northgate Dam for crappie.

**NORTHERN PIKE:**

Summer fishing adventures often begin with northern pike in North Dakota, one of the most common and popular native fish species until walleye overtook the popularity reigns among anglers. “The good thing is they’re easy to catch from shore,” Lee suggested.

In addition, pike flourish in high water years when shoreline vegetation becomes flooded. While North Dakota is in the midst of a dry spell, ample northern pike opportunities still exist across the region and there is still time to catch them before they head for deeper water in the summer heat.

Pike success is best right after the spawn, but anglers might still want to try places such as Buffalo Lodge Lake northeast of Granville, Rice Lake, Hiddenwood Lake, Makoti Lake (south of Makoti and close to nearby Hiddenwood Lake), the chain of natural lakes in McLean County - Long, Crooked, and Strawberry Lakes - and Lake Audubon - again because of its abundant shore-fishing opportunities. And don’t neglect Lake Darling for pike.

Northwestern pike lakes include Smishek Lake and Blacktail Dam. Now is the time to cast red-and-white Dardevles or large crankbaits from shore, moving out to deeper water in July or August. “The nice thing about pike is they grow fast,” Lee added.

Just a note when pike fishing on Lake Audubon – the lake is stocked with muskie, which are similar in size and coloration to northern pike. Be certain of species identification when keeping pike because all muskie less than 48 inches in length must be released.



**Lake Metigoshe is the place to go in north-central North Dakota for bluegill. The lake’s abundant aquatic vegetation, good water quality, and ample food provide some nice-sized bluegill and activity for anglers of all ages.**  
*N.D. Game and Fish Department Photo*

**CATFISH:**

When it comes to catfish in North Dakota, the Red River dividing North Dakota and Minnesota is considered the “go to” destination.

But it doesn’t have to be.

Simply head to the Missouri River System, namely the Missouri River tailrace or Lake Sakakawea’s back bays – especially those on the upper end around Williston or ones with feeder creeks and tributaries where water warms faster and is more turbid, described Game and Fish Department Missouri River Fisheries Supervisor Dave Fryda.

Native to the Missouri River, channel catfish provide good shore-fishing opportunities on both the river and lake. Given the state’s short summers catfish have a short “growing” season. Most average





**DEVILS RUN**  
JUNE 4-6



**WALLEYE TOURNAMENT**  
JUNE 25-27



**FORT TOTTEN THEATER**  
MONTH OF JULY



**RIBFEST**  
JULY 24



**ROCKFEST**  
AUGUST 13-14

Devils Lake is the premiere fishing destination in North Dakota. Plan your getaway weekend around one of these great events!

Visit our website for more great event details, fishing reports, and information to book your vacation.

[devilslakend.com](http://devilslakend.com)

**devils lake**  
North Dakota





**TROUT:**

Trout aren't native to North Dakota lakes or rivers. They don't spawn naturally in the state, either, so any trout fishery is a result of the cooperative fish spawning, rearing, and stocking program between the Game and Fish Department and U.S. Fish and Wildlife Service Garrison Dam National Fish Hatchery below Lake Sakakawea.

The Game and Fish Department stocks several community ponds, including Minot's North Dakota State Fair Pond. Rainbow and brown trout are also in the Missouri River below Garrison Dam.

Spring Lake Park near Williston, Kettle Lake northeast of Zahl, and Stanley and Watford City community ponds are stocked annually.

**The N.D. Game and Fish Department stocks catchable sized rainbow and brown trout in several community ponds in the state, providing shore-fishing in small and larger towns alike. For example, the North Dakota State Fair Pond has trout, as do ponds in communities such as Stanley and Watford City. In addition, the Missouri River tailrace below Garrison Dam is another good location to test one's fly-casting ability.**

*N.D. Game and Fish Department Photo*

**WALLEYE:**

Given their popularity, walleye are the most common fish species across North Dakota lakes and draw the most attention from fisheries managers.

The Missouri River System - Lake Sakakawea, Lake Oahe, and the river itself - plus Lake Audubon and Devils Lake are the state's premier walleye fisheries as well as regional destinations for many anglers.

However, other smaller nearby lakes can provide walleye opportunities and may not garner as much attention. Lee suggests places like Buffalo Lodge Lake, Lake Metigoshe, Lake Audubon, Hiddenwood Lake, Antelope Lake northeast of Anamoose in Pierce County, or Clear Lake southeast of Anamoose. A word of caution, though, Lee offered - Clear Lake doesn't have a boat ramp and shore access is limited.

The south side of Lake Audubon is closed to open water fishing because it's part of the Fish and Wildlife Service's Audubon National Wildlife Refuge. Buoys mark the boundary across the water. Even so, Audubon has ample shore-fishing opportunities with a Game and Fish Department Wildlife Management Area embracing the north side of the lake to provide multiple boat access points.

Look for the possibility of keeper-sized walleye from White Earth Dam with an occasional larger walleye from Northgate and Blacktail dams.

Early season is the time to try jigs and minnows for walleye, moving into jigs and nightcrawlers as summer advances. Spinners or slow death hooks with nightcrawlers are typically good summer presentations.

The N.D. Game and Fish Department website, ([gf.nd.gov](http://gf.nd.gov)) has just about everything an angler needs to know to help them head to the water for a summer fishing adventure. Simply click "Fishing" on the home page, and then "Where to Fish" for details.



**Although walleye are the most-desired fish species among anglers heading to North Dakota lakes and rivers, many lakes across the state offer a variety of other species.**

*Patricia Stockdill Photo*





# LAKEVIEW LODGE

*Devils Lake, ND*



## Ice Fishing Package

Package include lodging and guiding with portable fish house, bait and rods.

## Summer Fishing Package

Package includes lodging and guiding with boat, bait, and rods.

All packages may be adjusted to meet your needs.



For Reservations  
CALL 701-665-5060  
OR VISIT OUR  
WEBSITE

[www.lakeviewlodgedl.com](http://www.lakeviewlodgedl.com)





Camping in North Dakota  
ND Tourism Photo

#### 4 Bears RV Park

Located just south of the casino overlooking beautiful Lake Sakakawea, 4 Bears RV Park offers 24-hour security with 115 full service hookups and numerous picnic shelters. Primitive camping is also available.

#### Beaver Lake State Park

Located on the west shore of Beaver Lake, the park's gently rolling prairie provides scenic views for leisurely walks. In the summer, the lake attracts visitors for boating, canoeing, water skiing and fishing. Camping, picnicking and water-based activities available from mid-May through the end of September.

#### Cross Ranch State Park

Located along 7 miles of the last free-flowing, undeveloped stretches of the Missouri River, North Dakota's Cross Ranch Centennial State Park is rich in cultural and natural history.

#### Downstream Campground

Downstream Campground is located on the east bank of the Missouri River below Garrison Dam, which forms Lake Sakakawea. The area offers a wide variety of recreational activities, including boating, fishing and hunting.

#### Fort Abraham Lincoln State Park

Rich in both military and early Native American history, Fort Abraham Lincoln was once an important infantry and cavalry post. It was from this fort that Lt. Col. George Armstrong Custer and the Seventh cavalry rode out on their ill-fated expedition against the Sioux at the Little Big Horn. Portions of the military post, including the Custer House, have been reconstructed. Popular with visitors is On-A-Slant Indian Village. Reconstructed earthlodges depict the lifestyle of the Mandan Indians, who occupied this site from about 1575-1781. A modern campground is located in a scenic wooded area adjacent to the Heart River with picnic sites and playground equipment. Walking along the gently sloping hills, visitors have a panoramic vista of the Missouri River from the park's nature and historic trails. The park also has 4 primitive campsites with horse corrals.

#### Fort Lincoln State Park

Rich in both military and early Native American history, Fort Abraham Lincoln was once an important infantry and cavalry post. Portions of the military post, including the Custer House, have been reconstructed.

#### Fort Ransom State Park

The park, nestled in the picturesque and heavily-wooded Sheyenne River Valley, is managed as a natural and scenic area, and is located on one of North Dakota's officially designated Scenic Byways and Backways.

#### Fort Stevenson State Park

On the north shore of giant Lake Sakakawea, 3 miles south of Garrison, Ft. Stevenson State Park is known as the walleye capital of North Dakota. Visitors will find a modern campground, sleeping cabins, visitor center, interpretive trails and prairie dog town, as well as boat launching facilities.

#### Grahams Island State Park

The lake features some of the best fishing in North Dakota, both summer and winter. Amenities at Grahams Island State Park include a boat ramp, bait shop, modern and primitive camping facilities and camping cabins.

#### Icelandic State Park

Located on the north shore of Lake Renwick, Icelandic State Park offers visitors a wide array of recreational opportunities and glimpses of North Dakota's homesteading heritage.

#### Indian Hills Resort

Offers a variety of Camping and Lodging services from rustic Log Camping Cabins, Tent Camping and RV sites, to fully modern Lodging. Experience Lake Sakakawea's famous Wall-eye, Northern Pike, Small Mouth Bass, and Salmon fishing.

#### Lake Metigoshe State Park

Nestled in the scenic Turtle Mountains on the shores of Lake Metigoshe, Lake Metigoshe State Park was constructed by the Works Progress Administration in the 1930s and is one of the most popular year-round vacation spots in North Dakota.

#### Lake Sakakawea State Park

Located on the south shore of Lake Sakakawea, adjacent to Garrison Dam, Lake Sakakawea State Park offers a wide range of water based recreational activities and facilities. The park has a full service marina, including convenience store, fishing guide services and boat and camper storage.



Fort Stevenson State Park



# CAPITAL RV CENTERS, INC.

a  Campers Inn RV company

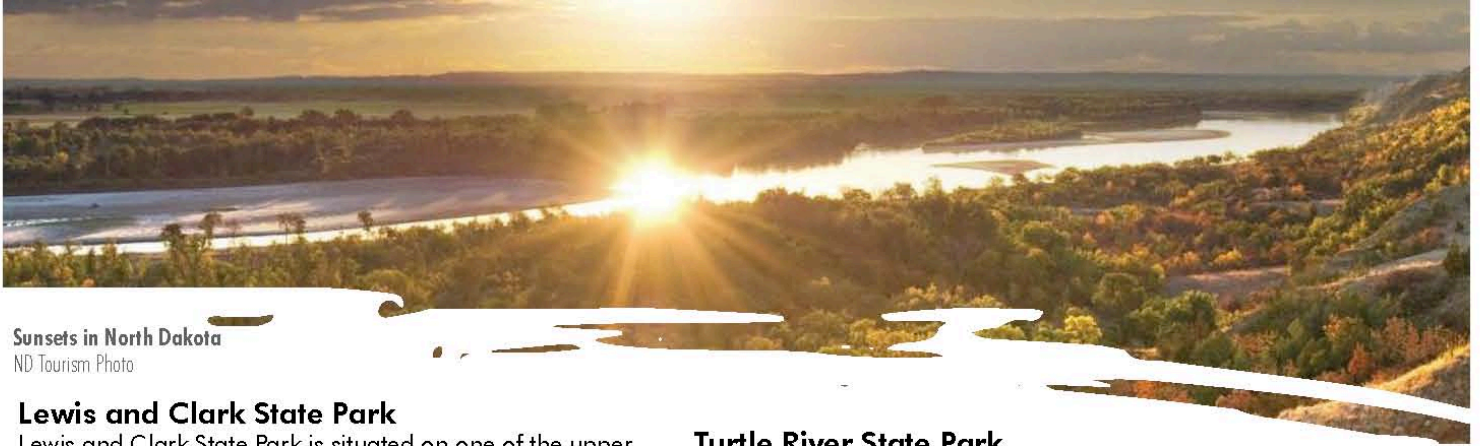


- ▶
- ▶
- ▶ Factory Trained and Certified Service Technicians
- ▶ Professional Sales Staff with a No-Pressure

- ▶
- ▶

*Contact  
or Visit Us*





Sunsets in North Dakota  
ND Tourism Photo

### Lewis and Clark State Park

Lewis and Clark State Park is situated on one of the upper bays of Lake Sakakawea. The rugged buttes of the North Dakota Badlands display a towering backdrop to one of the state's best recreation areas.

### Little Missouri State Park

Some of the most picturesque Badlands scenery can be found at Little Missouri State Park. Most of this primitive park is accessible only on foot or horseback. Electrical hookups are available to campers, however, all other facilities are primitive.

### Lunds Landing

Beautiful, quaint country setting, genuine hospitality, delicious homemade food, Juneberry pie, pan-fried walleye. Full-service restaurant, cabins, kayaks, canoes, boat rentals, fishing, hunting, birding activities, golfing, camping, tipi camping and Lewis and Clark Interpretive Trail. Wireless Internet available in all the cabins and lodge.

### Sully Creek State Park

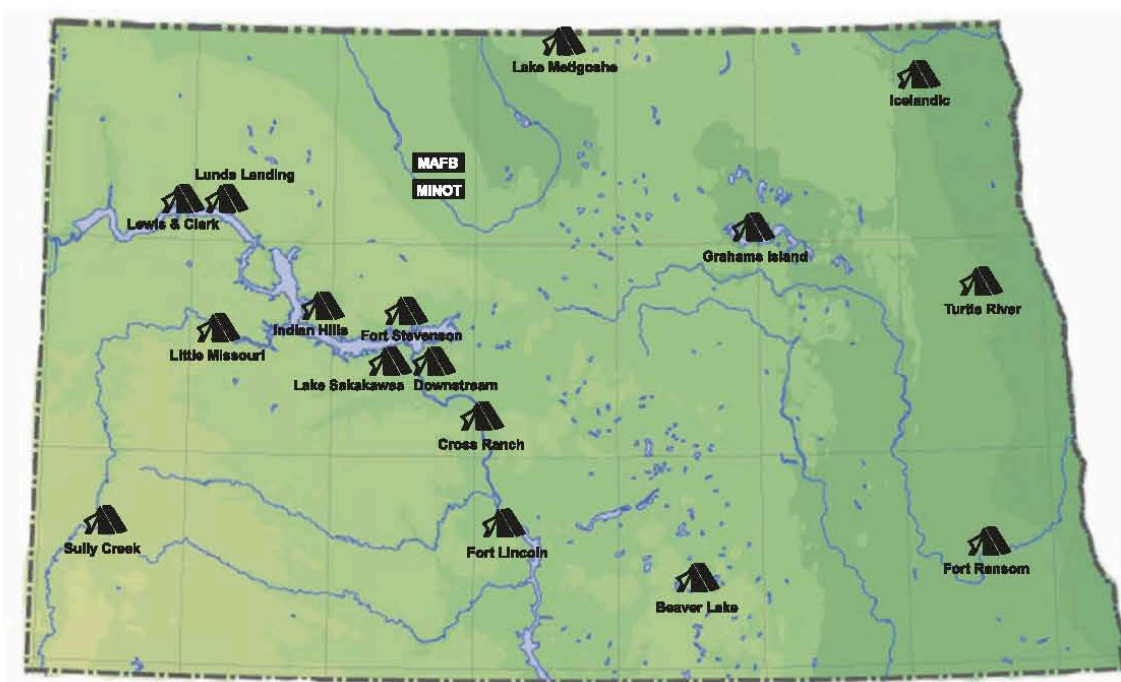
Located in the heart of the North Dakota badlands, Sully Creek is just minutes away from the historic town of Medora and Theodore Roosevelt National Park. Corrals are available for those bringing in their own horses.

### Turtle River State Park

Situated on the meandering Turtle River, Turtle River State Park is located in a beautiful wooded valley. Constructed in the 1930s by the Civilian Conservation Corps, the park offers year-round recreational activities, including camping, picnicking, fishing and trails for hiking, mountain biking and cross country skiing.

### Theodore Roosevelt National Park

Whether you're an avid camper, a hiking expert or just love beautiful scenery, there is something for everyone to enjoy at Theodore Roosevelt National Park. The park spans a total of 70,447 acres and is open year-round, although some trails and facilities are only open seasonally. The North Unit Visitor Center is open daily April to mid-October and Friday, Saturday and Sunday through the rest of the year. Be sure to drive the 14-mile Scenic Drive that leads in from the entrance of the park to Oxbow Overlook. The South Unit Visitor Center is located at the park entrance in Medora, North Dakota. It has an info desk, museum, movie and offers plenty of opportunities to learn about Theodore Roosevelt and his experience in the badlands. A major feature of the South Unit is the paved, 26-mile Scenic Loop Drive with interpretive stops that illustrate the parks history and natural features. Over 100 miles of trail make it a first-class hiking park, although because prairie and grasslands mostly surround the park, water and shade are limited along trails. Some are short self-guided trails while other trails span the length of the park.





# Dreams found here

Ask about  
Summer Fun  
Loans!

Call or stop into one  
of our convenient  
member service  
centers today.



**North Star**  
Community Credit Union

Some Restrictions apply. APY=Annual Percentage Yield

Maddock | Rugby | Bottineau | Cavalier | Grafton | Tolna  
Minot | Minot AFB | Velva | Willow City | Butte | Devils Lake



[nscu.com](https://www.nscu.com)







Theodore Roosevelt  
National Park Wind Canyon

The best place to be in the summer is lakeside. The calm waters provide an abundance of things to do and enjoy. Swimming, fishing, boating, or just hanging out on the shore are all the perfect activities for a sunny day and are hard to surpass in how fun and easy they are to do.

### East Arroda Lake

This beautiful spot is in Oliver County and provides an excellent spot for fishing and boating. The area is simply gorgeous all summer long.

### Des Lacs Lake

Des Lacs Lake is home to a wildlife refuge as well as recreational areas. These help provide the perfect lake environment for everyone to enjoy. Hundreds of thousands of snow geese stop on their migration to this lake every year and plenty of other wildlife can be seen. Head out to Kenmare, North Dakota and take a visit to Des Lacs Lake and experience it for yourself.

### Des Moines Lake

This lovely lake is the perfect spot for some lakeside lounging as well as some fun on the water. There are a couple of lakes nearby as well, so your possibilities are endless in this area. Des Moines Lake is located in Kidder County about 30 miles from Carrington.

### Devils Lake

Devils Lake is the largest natural lake in North Dakota and is the best spot for summer fishing. If fishing is not your thing, then you can still enjoy the lake in any way you choose. There are tons of opportunities for all sorts of activities and it's definitely worth visiting again and again.

### Lake Audubon

This lake is great for smallmouth bass fishing as well as perch and walleye. It's not only a perfect spot for fishing but also a beautiful spot in general. Grab some rods and check it out sometime!

### Lake Darling

Lake Darling is the focal point of the Upper Souris National Wildlife Refuge located in northwest North Dakota.

### Lake Metigoshe

Nestled in the Turtle Mountains, Lake Metigoshe is an absolutely breathtaking spot that is perfect for a stroll or setting out on the beautiful blue waters in a canoe and just enjoying nature and the warm weather. You won't find many places more serene than here, and the environment is picture worthy year round.

### Lake Oahe

Lake Oahe extends from South Dakota all the way into south central North Dakota. It has prime opportunities for catching walleye, northern pike, catfish, and white bass. There's plenty of lake to enjoy and plenty of fish to catch here, and it's definitely a spot you should visit.

### Lake Sakakawea

North Dakota's largest body of water is one of the top destinations for everything you can enjoy when it comes to seasonal lake fun. Whether you have a sailboat, pontoon, canoe, speedboat, or prefer to experience the shore or take a plunge into the water for a swim, you are guaranteed to have a good time here.

### Larimore Dam

Take a weekend trip and camp at this spectacular lake formed from the Larimore Dam. Bring a canoe or kayak and take an early morning adventure across the lake, or just have a picnic lakeside on a pleasant day. There are so many possibilities here to make some awesome summer memories!

### Nelson Lake

Nelson Lake is a great place if you are looking for bass fishing. There are both largemouth and smallmouth bass here along with northern pike and crappies. You're sure to get some bites here!

### Powers Lake

The town of Powers Lake, North Dakota, is right on the banks of Powers Lake. The lake is an optimal spot for all kinds of summer fun, so get out there and enjoy what it has to offer.

### Rice Lake

Rice Lake, near Minot, is a great summer destination for anyone who loves being around water. Swimming, fishing, boating - you name it, this lake is there for. Hang out with family and friends there all day and enjoy a sunset over Rice Lake to complete a perfect summer evening.

### Strawberry Lake

Strawberry Lake is located in McLean County, North Dakota. This lake is 144 acres in size. It is approximately 21 feet deep at its deepest point. Anglers can expect to catch a variety of fish including Bluegill, Northern Pike, Walleye and Yellow Perch.



# FLYING ADVENTURE

Scenics



Instruction



Experience  
the adrenaline  
rush

Aerobatics



Maintenance



## Minot Aero Center

We offer the best adventures from the sky!  
We offer scenic flights and flight instruction. For the thrill seekers, we now offer aerobatic training!

## Contact Us:

- 📍 2216 North Broadway, Minot ND
- 📞 Phone: 701.852.4092
- ✉ Email: [marketing@minotaerocenter.com](mailto:marketing@minotaerocenter.com)
- 🌐 Web: [www.minotaerocenter.com](http://www.minotaerocenter.com)





Prairie Village Museum

The community of Rugby is perhaps known best for being the Geographical center of North America as well as the location for the annual Pierce County Fair. Rugby is located 64 miles east of Minot. Rugby has several places of interest for tourists such as a Museum, Library, Golf course, Movie Theater, swimming pool, parks, playgrounds, hockey arena, baseball diamonds, and excellent hunting grounds for waterfowl, upland game, and big game. Each summer, the small town hosts the Pierce County Fair which invites locals and communities nearby to attend attractions such as the demolition derby, carnival rides and Party in the Dirt entertainment; Snake Oil and Diamonds and Whiskey.

From recreational facilities and shopping, to museums and historical landmarks, Rugby has something for everyone. Whether you're here for the day, a weekend getaway or an extended stay, we have the services and attractions to make your visit both pleasurable and memorable. The Geographical Center of North America was established at (or near) Rugby by a U.S. Geological Survey in 1931. A year later, W. B and E.B. Paterson - assisted by the local Lions Club, Boy Scouts and other volunteers - erected a fieldstone monument at the intersection of U.S. Highway 2 and N.D. Highway 3 to denote Rugby's geographical distinction. Thousands of visitors stop at the monument each year to snap photos at North America's geographical center.

**Prairie Village Museum is open!**

Monday through Saturday 9:00am-6:00pm and Sundays from 12:00-5:00pm. Call 701-776-6414 for more information.

**Rugby Lions Music in the Park**

*Celebrating 25 years this year*  
Ellery Park  
Every Wednesday June 9- August 18 at 7pm

**Rhubarb Festival**

Sunday, June 20  
Prairie Village Museum

**Pierce County Fair**

Thursday, June 24-Sunday, June 27  
It is the place to be! Family Fun for Everyone!

**4th of July Parade**

Sunday, July 4 1pm  
Line up beginning at noon at Rugby High School parking lot.  
For more info call 776-5846

**201 S MAIN, DOWNTOWN - RUGBY 701.881.0110**

**WEDNESDAY 10:00 AM - 5:30 PM    FRIDAY 10:00 AM - 5:30 PM**  
**THURSDAY 10:00 AM - 8:00 PM    SATURDAY 10:00 AM - 2:00 PM**

*Take a sip back in time at*

**soda fountain & diner**

*Featuring*  
hand dipped malts and shakes, frappes, smoothies, ice cream and old fashioned soda fountain favorites!

*Enjoy a seat on our new outdoor patio!!*

*Satisfy your appetite*  
with our Paninis, Burgers, Salads, Wraps and more!

**Rugby, ND** Mon - Fri 10am - 5pm, Sat 11am - 3pm





Demo Derby

**Rugby Chamber Softball Tournament**

Saturday, July 10- Sunday, July 11  
 2 day Softball Tournament limited to 12 teams with 5 games guarantee. For more information call Mark at 701-208-1373

**Crazy Days**

Thursday, July 15  
 All around town  
 Super crazy sales from our businesses, food trucks, Car Show, Village Arts musical performances, crafts, vendors and much, much more!! Call 701-776-5846 for more information

**Kids Camp**

Monday, July 12-Friday, July 16  
 Prairie Village Museum  
 Join our annual Kids Camps for a week of fun, camaraderie and creativity. Theme is "A Day at the Fair" – for more info call 776-6414

**Good Samaritan Health Services Foundation Charity Golf Tournament**

July 16  
 Rugby Golf Club  
 For more information call Darcie at 776-5455 Ext 2218

**36th Annual Village Fair**

Sunday, August 22  
 Prairie Village Museum  
 Music, pioneer demonstrations, food, art exhibits and loads of family fun. The Village Fair is the biggest day of the year at the Prairie Village Museum. Call 701-776-6414 for more information and updates.

**10th Annual Daryl Kuhnenn Memorial Ride**

Saturday, September 11  
 Follow them on Facebook at Daryl Kuhnenn Memorial Ride for updated information or call 701-208-0066

LET'S MEET IN THE

center

---

GOLFING • PRAIRIE VILLAGE MUSEUM • RESTAURANTS • PARKS

LYRIC MOVIE THEATRE • SHOPPING • A LOT OF *great* COMMUNITY EVENTS

---

FOR MORE INFO ON UPCOMING EVENTS  
 CHECK OUT OUR COMMUNITY CALENDAR  
[www.rugbynorthdakota.com](http://www.rugbynorthdakota.com)  
 701.776.5846 • [rugbychamber@gondtc.com](mailto:rugbychamber@gondtc.com)

GEOGRAPHICAL CENTER OF NORTH AMERICA

RUGBY

NORTH DAKOTA



**Escape Point**

Minot, ND | 18 2nd St NE, Suite 3 | 701-500-0501  
 An Escape Room is a live-action adventure game where players are locked in a room where they must find clues and solve a series of puzzles in order to escape the room within a set period of time.

**High Air Ground**

Minot, ND | 4th Ave NW | 701-837-5867  
 HighAir Ground is a one-of-a-kind INDOOR entertainment experience focused on healthy, safe family fun and fitness. We offer unique youth activities, personal fitness, medical and therapeutic benefits and special events! With over 10,000 sq. ft. of wall-to-wall trampolines and five private party rooms, HighAir Ground is the ideal venue for your next birthday party, team party and/or group event. Learn more about all of the activities we offer below!

**Sky Zone Trampoline Park**

Bismarck, ND | 5003 Ottawa St | 701-354-9099  
 An indoor trampoline park featuring freestyle bouncing, dodgeball, fitness programs & more.

**Splash Down Dakota Water Park**

Minot, ND | Dakota Square Mall | 701-837-3115  
 The largest indoor water park in the mid-west region with three huge slides, a large pool, a kiddie splash area, and a spacious hot tub.

We have you covered for your *Summertime Fashion* wants and needs

- New Arrivals almost daily!
- Mac and Me Denim
- Multi Generational Clothing
- Exclusive Jewelry

**Mainstream Boutique**

LOCATED IN DOWNTOWN MINOT  
 2 South Main Street | Minot, North Dakota  
 701-837-7711 | mainstreamboutique.com



**YOUR OASIS FOR FUN!**

- Luxury yacht, with a new river boat launching in Summer 2021
- Outdoor water park with three slides, kids splash pad and lazy river
- Full-service marina with lake access for world class fishing, including the Casino Cup Walleye Circuit
- Gaming areas with slots, table games and more
- Nearly endless buffet
- Gourmet dining
- Luxury lodge accommodations
- Modern RV park
- Nearby golf courses
- C store and Eagles Landing Liquor Store
- Ultra modern event center
- Meeting and event spaces

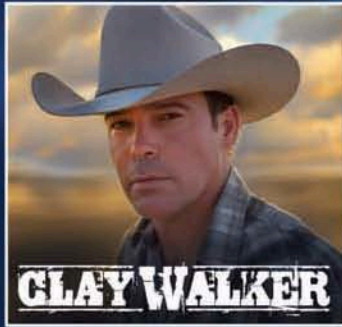


800.294.5454  
 4bearscasino.com





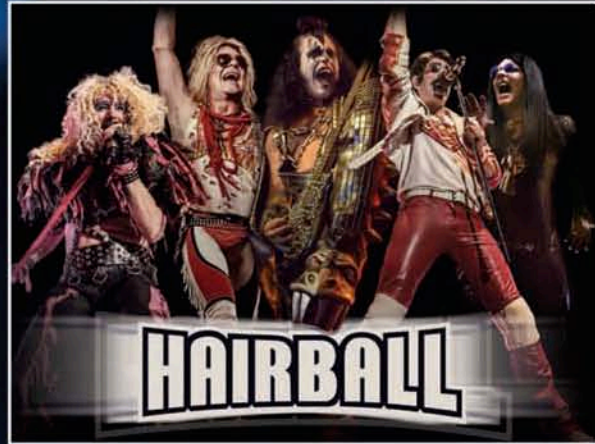
Upcoming Entertainment



**CLAY WALKER**

**FRIDAY,  
JULY 23, 2021**

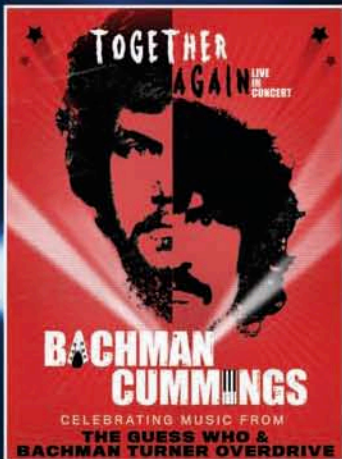
GATES 6PM | SHOW 8PM  
\$35 GENERAL ADMISSION  
TICKETS ON SALE MAY 20<sup>TH</sup>!



**HAIRBALL**

**FRIDAY, AUGUST 6, 2021**

GATES 6PM | SHOW 8PM  
\$20 GENERAL ADMISSION  
TICKETS ON SALE MAY 20<sup>TH</sup>!

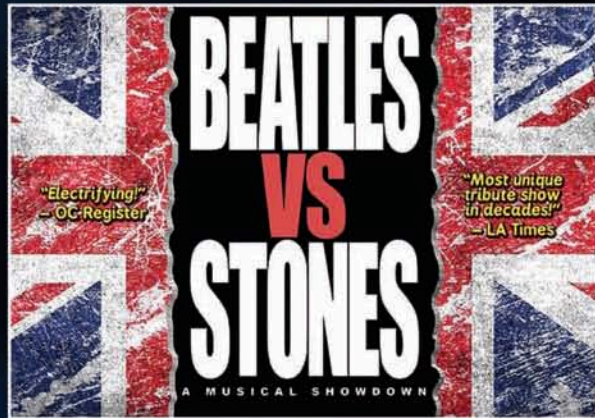


**BACHMAN CUMMINGS**

CELEBRATING MUSIC FROM  
THE GUESS WHO &  
BACHMAN TURNER OVERDRIVE

**SATURDAY,  
AUGUST 7, 2021**

GATES 6PM | SHOW 8PM  
\$20 RESERVED | \$25 VIP  
TICKETS ON SALE MAY 20<sup>TH</sup>!



**BEATLES  
VS  
STONES**

A MUSICAL SHOWDOWN

**SATURDAY, SEPT. 18, 2021**

DOORS 6PM | SHOW 7PM  
\$20 RESERVED | \$25 VIP  
TICKETS ON SALE JULY 22<sup>ND</sup>!



**EASTON  
CORBIN**

**SATURDAY,  
OCTOBER 23, 2021**

DOORS 6PM | SHOW 7PM  
\$40 RESERVED | \$45 VIP  
TICKETS ON SALE MAY 27<sup>TH</sup>!

*Great Stories Start Here!*

f t SPIRITLAKECASINO.COM





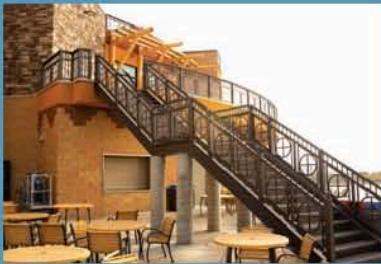


# MHA NATION INTERPRETIVE CENTER

Now Open

## THE INTERPRETIVE CENTER FEATURES:

- 250-SEAT MEETING ROOMS
- 500-SEAT AMPHITHEATER
- CLASSROOM SPACE
- CULTURAL SEMINARS ON BEADING, TRADITIONAL AGRICULTURE AND STORYTELLING
- TRADITIONAL CATERED MEALS
- OAK TREE GIFT SHOP
- MIRISHIBISHA (BLACK WATER) COFFEE SHOP
- SPECIAL EVENTS AND CULTURAL DEMONSTRATIONS
- MUSEUM



9386 HWY 23 NEW TOWN, ND



# MHA Nation Interpretive Center Honoring Native Culture

ABIGAIL KINDER

If you're looking to experience and learn about North Dakota's extensive indigenous culture, be sure to take a visit to the new MHA Nation Interpretive Center in New Town, North Dakota! The MHA Nation, which is comprised of Mandan, Hidatsa and Arikara Nation tribes, also known as the Three Affiliated Tribes, is located on the Fort Berthold Indian Reservation in central North Dakota and includes over 16,800 members. The Interpretive Center is a newly developed tribute to the history and heritage of the Three Affiliated Tribes.

"We wanted to have a place where people could physically come and experience our culture, whether it's our own members from our reservation or people from off the reservation... We are a very rich culture and there is so much history and so much more to us than people know. It's an opportunity for people to see the entirety of what we've been through as Mandan, Arikara or Hidatsa people and where our history first began and where it is today, because we're still thriving," said Mykal Drosdal, Marketing Manager.

The center includes a variety of amenities and informative displays, including interactive exhibits and a recording studio for tribal members and elders to record their own stories to pass down for generations to come. They offer traditional catered meals and a coffee shop. It also includes two meeting rooms and a scenic rooftop that overlook Lake Sakakawea to be rented out for conferences, meetings, or weddings. The outdoor amphitheater holds up to 500 people for concerts and events. The MHA Interpretive Center also hosts permanent and rotating galleries that display artifacts and history from the three tribes as well as cultural seminars on beading, traditional agriculture and storytelling. There are also archival rooms for research and preservation of artifacts.

The Interpretive Center held its grand opening on May 19, 2021, and the staff looks forward to planning future events and exposing travelers from all over to the amazing heritage of the MHA Nation. Check out their Facebook page at MHA Nation Interpretive Center. The MHA Nation Interpretive Center is located at 9386 Highway 23, New Town, ND, 58763.



Newly Opened MHA Nation Interpretive Center  
MHA Nation Interpretive Center Photo



Fargo Air Museum

## Bonanzaville USA

West Fargo, ND | 1351 Main Ave W | 701-282-2822  
Interpreters and 40 buildings on 12 acres re-create life when "bonanza" farms ruled the prairies in the late 1800s. Bonanzaville USA includes just about every type of building and business that might have made up a small North Dakota town when the area was being settled.

## Dakota Territory Air Museum

Minot, ND | 100 34th Ave NE | 701-852-8500  
The museum tells a rich and varied story of region's aviation history. In addition to a replica of the Wright Flyer, the museum displays military and civilian aircraft from 1903 through the present. There are exhibits, narratives, kiosks, military uniforms, aviation items, memorabilia, paintings, photographs and a gift shop.

## Dickinson Museum Center

Dickinson, ND | 188 Museum Drive E | 701-456-6225  
Dinosaur museum featuring 11 full-scale dinosaur skeletons, including real skeletons excavated from the area, one of the world's finest real Triceratops skulls, skeletal casts and sculptures. Visitors may also view an outstanding mineral collection from locations all over the world, invertebrate fossils and a real Rhinoceros and bison excavated from the area. The center also contains a history museum that tells the story of Dickinson and southwestern North Dakota. The center contains two exhibit galleries, the Pioneer Machinery Building and the 12-acre Prairie Outpost Park with five historic and six reproduction buildings.

## Fargo Air Museum

Fargo, ND | 1609 19th Ave N | 701-293-8043  
A premier flying museum in the Upper Midwest. The rotation of historic flyable airplanes. Other exhibits include: History of the North Dakota Flying Aces, North Dakota Air National Guard, cloud modification and agriculture aviation. We also have historical military displays featuring World War II, Korea, Vietnam and Iraq and Afghanistan wars.

## Frontier Village & World's Largest Buffalo

Jamestown, ND | 404 Louis L'Amour Lane | 701-251-9145  
Take a step back in time at this re-created prairie town. Original buildings from the frontier villages of North Dakota have been moved to this site and filled with antiques and artifacts that bring the world of the prairie pioneers to life.





DAKOTA TERRITORY  
**AIR MUSEUM**



*Win this  
1946 J-3  
Cub*

JUNE 12 10AM-5PM  
*Authors, Artists  
& Airplanes*

JULY 14 6PM  
*Wings & Wheels  
with Dakota Cruisers*

SEPTEMBER 17 6PM  
*Women,  
Wine & Wings*

OCTOBER 23 7PM-11PM  
*Night at the Museum*  
Hangar Dance

TICKETS AVAILABLE FOR  
PURCHASE ONLINE  
DAKOTATERRITORYAIRMUSEUM.COM



*25th Annual  
Sweepstakes*

ENTER TO WIN...  
Classic 1946 J-3 Cub or \$20,000 Cash  
Winner's Choice

VISIT OUR WEBSITE  
FOR DETAILS

100 34th Ave NE, Minot • 701-852-8500

*Museum Hours:*

Mon-Sat: 10am - 5pm

Sun: 1pm - 5pm

Open: May 8-October 17, 2021

*Admissions:*

Ages 5 & Under: Free

Ages 6-17: \$5.00    Ages 18+: \$10.00

Family: \$20.00

Active Military - 50% Discount

dakotaterritoryairmuseum.com





Dickinson Museum Center

**Gateway to Science Center**

Bismarck, ND | 1810 Schafer St, Suite 1  
 Gateway to Science is North Dakota's hands-on science center and children's museum. Ignite your imagination as you explore our unique gallery containing more than 90 interactive science exhibits. With subjects ranging from robotics to simple machines, real human brain specimen to nanotechnology and beyond, learning is made fun for all ages in an informal environment where hands-on experience is the best teacher.

**National Buffalo Museum**

Jamestown, ND | 500 17th St SE | 701-252-8648  
 Seeing one albino bison in a lifetime puts you among a lucky few. Find three of them—in one place—and you must be in North Dakota. The National Buffalo Museum has long been known for its albino cow White Cloud, a sacred animal in many Native American cultures.

**North Dakota Cowboy Hall of Fame**

Medora, ND | 250 Main Street | 701-623-2000  
 Native American, Ranching and Rodeo in Medora provides the history and heritage of the trail drivers, homesteaders, rodeo stars, Native Americans and the horse's impact on plains culture. Recipient of 2010 Best American Cowboy Museum in Sept. 2010.

**North Dakota Heritage Center**

Bismarck, ND | 612 E Boulevard Ave | 701-328-2666  
 New galleries almost doubled the size of the North Dakota Heritage Center in Bismarck. Explore the dinosaur age, native tribes and modern cultural issues. Exhibits in the Treehouse, scheduled to open in 2015, will cater to tykes.

**Old Soo Transportation Museum**

Minot, ND | 15 North Main Street | 701-852-2234  
 The museum focuses on the history of transportation in the American West including railroads, automobiles, buses and aviation. Permanent exhibits include BNSF, Amtrak, Great Northern Railway, Milwaukee Road, Northern Pacific Railway, Soo Line/Canadian Pacific, Railway Express Agency and Westland Oil Company.

**Prairie Village Museum**

Rugby, ND | 102 US-2 | 701-776-6414  
 This museum at the Geographical Center of North America features 23 historic buildings and six exhibition halls arranged around a quaint village square. The museum's expansive collection includes everything from Native American powwow dresses to antique cars and farm machinery, to a real iron lung.

**Railroad Museum of Minot**

Minot, ND | 19 1st St NE | 701-852-7091  
 This museum is dedicated to the railroad history and culture that established many of the state's cities. Displays and artifacts trace the vital impact of the railroads on the communities and the way of life the railroads provided for many individuals. The museum focuses on the time period from 1886 to present and has many hands on displays and information for visitors for all ages.

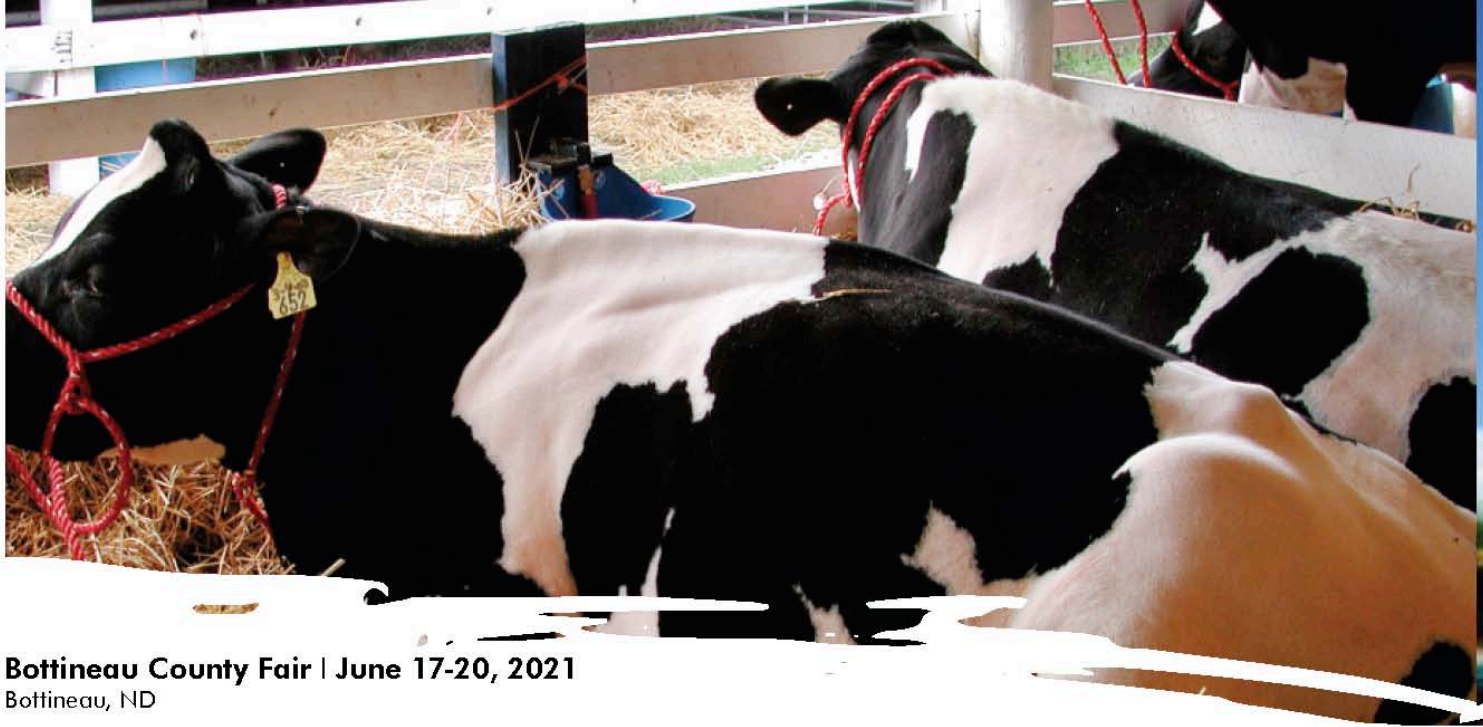
**The Children's Museum at Yunker Farm**

Fargo, ND | 1201 28th Ave N 701-232-6102  
 The Children's Museum offers hands-on exhibits and creative, unique learning opportunities for children and families. The Museum is located at a picturesque farmstead that includes picnic areas, mini-golf, train and carousel rides, children's gardens, nature trails and a playground.



National Buffalo Museum





**Bottineau County Fair | June 17-20, 2021**  
Bottineau, ND

**Wells County Fair | June 17-20, 2021**  
Fessenden, ND

**McLean County Fair | June 18-20, 2021**  
Underwood, ND

**Greater Grand Forks County Fair**  
**June 23-27, 2021**  
Grand Forks, ND

**Upper Missouri Valley Fair | June 23-27, 2021**  
Williston, ND

**Roughrider Days Fair & Expo**  
**June 23-July 4, 2021**  
Dickinson, ND

**Pierce County Fair | June 24-27, 2021**  
Rugby, ND

**Burke County Fair | June 25-27, 2021**  
Flaxton, ND

**Stutsman County Fair | June 30-July 3, 2021**  
Jamestown, ND

**Bowman County Fair | July 15-18, 2021**  
Bowman, ND

**Mercer County Fair | July 15-18, 2021**  
Beulah, ND

**Pembina County Fair | July 8-10, 2021**  
Hamilton, ND

**Red River Valley Fair | July 9-18, 2021**  
West Fargo, ND

**Tri-County Fair | July 8-11, 2021**  
Wishek, ND

**Sargent County Fair | July 22-25, 2021**  
Forman, ND

**Adams County Fair | July 30- Aug 1, 2021**  
Hettinger, ND

**Morton County Fair | August 4-9, 2021**  
New Salem, ND

**Grant County Fair | August 19-22, 2021**  
Carson, ND

**Ransom County Fair | August 24-29, 2021**  
Lisbon, ND

**Big Iron Farm Show | September 14-16, 2021**  
West Fargo, ND



North Dakota State Fair





North Dakota State Fair

**North Dakota State Fair | July 24-30, 2021**  
Minot, ND

**July 24**

- STATE PARADE, begins at the corner of Burdick and Broadway
- PONY PULL, event begins at 3:00pm

**July 25**

- HORSE PULL, event begins at 5:00pm

**July 26**

- KMOT PRIDE OF DAKOTA DAY
- \$1 HOT DOG LUNCH 11:00am-1:00pm
- ENDURO RACES

**July 26-27**

- BULL RIDING CHALLENGE & RANCH BRONC RIDING

**July 27**

- MILITARY APPRECIATION DAY
- BEEF PICNIC - 11:00am-1:00pm
- FAMILY DAY FESTIVAL, event begins at 10:00am
- FREESTYLE MOTOCROSS

**July 28**

- KX/CO-OP DAY
- ICE CREAM SOCIAL at 2:00pm
- KIDS' SHOW DE O, showtime 1:30pm-4:30pm

**July 29**

- MUTTON BUSTIN', event begins at 6:30pm
- SENIOR DAY FESTIVAL, event begins at 10:30am
- WATER DAY - FESTIVAL O' FUN, event begins at 11:00am

**July 30**


- 811 DAY, event begins at 10:00am

**Concerts**

- July 23 - Lynyrd Skynrd
- July 24 - Dan + Shay
- July 25 - Ashley McBryde
- July 28 - Sawyer Brown
- July 29 - Casey Donahew
- July 30 - Billy Idol
- July 31 - Kane Brown

For tickets and event details visit [www.ndstatefair.com](http://www.ndstatefair.com)



A Touchstone Energy<sup>®</sup> Cooperative 

**DAY OR NIGHT  
RAIN OR SHINE**

**HARD WORK NEVER QUILTS.**



**Contact Us For All Your Electric Needs!**  
**WWW.VERENDRYE.COM**

**Minot - Velva**  
**701-852-0406**  
**800-472-2141**





Inspired  
minds.  
Grateful  
hearts.  
Lives  
of virtue.

**Deepen your child's faith.  
Expand their horizons.**

Thousands of hours of work and research and visits to some of the best schools around the nation are leading us to a renaissance of Catholic education at Bishop Ryan Catholic School.

Some of what we're doing is new. Some is traditional, tried and true. While our students are hard at work exploring math, science, social studies, languages and the arts, their moments of learning are framed by the virtues of faith, hope and charity, prudence, responsibility, trustworthiness, temperance, patience, kindness and humility. An integrated virtue-based Catholic education is what we're working on for students and the future to come.

At its heart, Bishop Ryan is a community of faith and family. It's an exciting time to be a Bishop Ryan Lion; for more information about joining our lion pride, visit us online, give us a call, or stop in!



We're proud to be recognized as a national Cardinal Newman Society Catholic Education Honor Roll School and one of the top North Dakota schools in the most recent Cognia Accreditation Review.



**2021-2022 REGISTRATION DEADLINE**

Students planning to start on the first day of the upcoming school year must have registration paperwork submitted by August 13th, 2021.

**BISHOP RYAN**  
CATHOLIC SCHOOL

UNDER THE PATRONAGE OF THE SACRED HEART OF JESUS

**www.bishopryan.com**  
**(701) 838-3355**

Are you ready  
to be a  
**LION?**







Hillside Aquatic Complex

**Elks Aquatic Center**

Bismarck, ND | 321 W. Broadway Ave | 701-222-6607

**Hillside Aquatic Complex**

Bismarck, ND | 1719 E. Boulevard Ave. | 701-222-6419

**Garrison Swimming Pool**

Garrison, ND | 443 1st St. NW | 701-463-2751

Take a refreshing dip on a hot day and have a great time at the Garrison Swimming Pool which includes a slide and little tykes wadding pool.

**Raging Rivers Waterpark**

Mandan, ND | 2600 46th Avenue SE | 701-663-3393

Raging Rivers Waterpark features tube slides, speed slides, a lazy river and a brand new Aqua Play area. It is four acres of wet and wild fun!

**Roosevelt Park Pool**

Minot, ND | 1215 E Burdick Expy | 701-857-4136

The Roosevelt Park Pool is one the best places to cool off and have fun in Minot. The pool features a waterslide, a wading pool, and a recently finished expansion of the locker room facilities.

**Velva Swimming Pool**

Velva, ND | 701-338-2668

**Swimming Inclement Weather**

Whenever inclement weather threatens participants, or lightning is spotted, the pools will close. If the air temperature is not 66 degrees by 11am, the pools will not open. If the pool closes during a session, you will receive a rain check. Rain checks must be used during the current pool season.



**• RESTAURANT/BAR HOURS**

Tuesday - Thursday 12pm to 8pm  
 Bar Opens at 12pm, Kitchen Opens at 4pm  
 Friday & Saturday: 12pm to 9pm/Bar 12pm - 1am



**• 24 HOUR BAIT & RESTROOMS**

**• MOTEL ROOMS**

\$85/Night \$10 extra for pets

**• BANQUET/MEETING ROOMS**

**PHONE 701.337.2070**

**1412A HIGHWAY 83 NORTH, COLEHARBOR, ND 58531**







Wildwood Country Club Golf Course

**Black Sand Golf Course**

Beulah, ND | 1130 ND-49  
701-873-2929

Located on the south side of Lake Sakakawea. The public course, formerly known as Beulah Municipal Golf Course, has been in operation since 1953. Play this 9-hole course twice, and it measures 6,226 yards and plays to a par 70.

**Bully Pulpit Golf Course**

Medora, ND | 3731 Bible Camp Rd | 701-623-4653

Chiseled into the awe-inspiring North Dakota Badlands, you'll fall in love with the wild and breathtaking scenery that surrounds Bully Pulpit Golf Course, while enjoying a world-class golf experience. This 18-hole venue features five tees, ranging in length from a comfortable 4,750 total yards from the forward tees to a challenging 7,166 at the tips.

**Eagle Ridge Golf Club**

Williston, ND | 6401 3rd Ave E | (701) 572-6500

Not far from Williston, Eagle Ridge Golf Club offers terrific views and challenging play for golfers at every skill level. Well-groomed fairways and greens keep Eagle Ridge Golf Club difficult yet friendly, and the staff can offer tips and tricks for playing your best round. Eagle Ridge is a terrific choice for your regular rounds of golf, or perhaps a new destination for you and friends when visiting Williston.

**Edgewater Golf Course**

New Town, ND | 100 Highway 23 | (701) 627-9407

The 9-hole "Edgewater" course at the Edgewater Country Club facility in New Town, North Dakota features 3,278 yards of golf from the longest tees for a par of 36. Edgewater golf course opened in 1979. Ray Helphrey manages the course as the General Manager.

**Garrison Golf Course**

Garrison, ND | Hwy 37, | 701-337-5420

Beautiful 9-hole, par-36 golf course. Year-round golf on the new state of the art golf simulator! Nice clubhouse for seating up to 75 people with hot food!

**Jack Hoeven Wee Links Golf Course**

Minot, ND | 900 Forest Road | 701-857-1570

The Wee Links is a real golf course consisting of nine holes varying from 60 to 120 yards in length. It was designed specifically for kids. Each hole promotes one of the The First Tee's 9 Core Values.

**Lucy's Amusement Park (Mini Golf)**

Minot, ND | 5119 Hwy 83 S | 701-839-2320

Lucy's Amusement Park is a terrific place to have hours of family fun. The park offers the most challenging 18-hole miniature golf course in the northwest, cosmic orbiter, a tower slide, various kiddie rides, disco scooter and moonwalk. Picnic areas are available with bonfire by request. Ride fees set for individual rides.

**Minot Country Club**

Minot, ND | 1912 Valley Bluff Dr | 701-852-3591

This member only course features four sets of tees ranging from 4,686 yards to 7,029 yards. In addition to world-class golf, Minot Country Club has a new clubhouse featuring golf shop, restaurant, lounge, conference room and locker room facilities. There is a practice facility with short game area, a member pool and other year round family friendly activities.

**Pebble Creek Golf Course**

Bismarck, ND | 2525 N. 19th St | 701-223-3600

Pebble Creek plays to par 70 with a length of 5,874 yards for 18 holes. This links-style course with native grass rough has water in play on five holes, and big fast greens to test your putting nerves. Pebble Creek is also the site of Fore Seasons Golf Center that features an indoor driving range, pro shop and a batting cage. Club rentals, pro shop, indoor and outdoor driving range, putting green and cart rentals are also available.

**Riverwood Golf Course**

Bismarck, ND | 725 Riverwood Drive | 701-222-6462

Riverwood is an 18-hole course with tree-lined fairways making for challenging play. From the tips, the par-72 course measures 7,004 yards. The course has been lengthened from 6929 yards while rating/slope remains the same. The distinction is made by the magazine's nationwide team of course raters, and is an exclusive honor given to public golf courses.

**Roughrider Golf Course**

Minot AFB, ND | 220 Golf Drive | 701-723-3164

A challenging nine-hole course located near the Base and can be entered directly from US Highway 83. The complex is managed and maintained in a relaxed, friendly atmosphere and offers nine holes, a driving range, putting green, chipping green, and picnic area. The club house includes a pro shop and snack bar/lounge.



### Souris Valley Golf Course

Minot, ND | 2400 14th Avenue SW | 701-857-4189  
The 18-hole "Souris Valley" course at the Souris Valley Golf Course facility in Minot, North Dakota features 6,759 yards of golf from the longest tees for a par of 72 . The course rating is 72.5 and it has a slope rating of 125 on Blue tees.

### Star City Golf Course

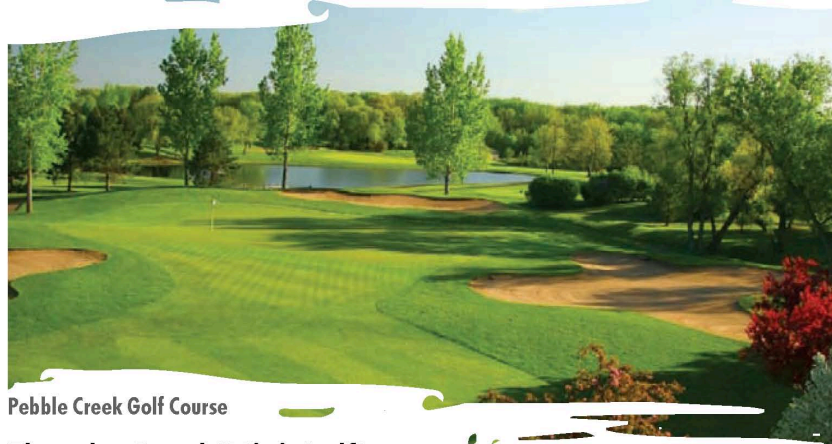
Velva, ND | Highway 41 North | 701-338-2363  
9-holes of golf that is ideal for all levels of golfers and is designed to help you improve your game. You will be able to test your skill set with our numerous water hazards and carefully placed sand traps.

### Super Slide (Mini Golf)

Bismarck, ND | 500 Riverside Park Rd | 701-255-1107  
Superslide Amusement Park has a variety of activities for everyone to enjoy! Come play a round of mini-golf with friends or challenge your family to a game of Bankshot Basketball. Take a trip down the 6-lane Superslide and soar above the trees on the Ferris Wheel.

### The Links of North Dakota

Ray, ND | 5153 109th Ave NW | 701-568-2600  
The Links of North Dakota is an example of some of the purest links style golf. This natural, rolling true links design harkens back to the birth of the game – golf as it should be played - in a truly magnificent setting along the bluffs and banks overlooking sprawling Lake Sakakawea.



Pebble Creek Golf Course

### Thunder Road (Mini Golf)

Fargo, ND | 2902 Thunder Rd S | 701-282-5151  
Two unique 18-hole miniature golf courses, both playing up around the volcano, with ponds, rivers and waterfalls. You can have a relaxing round of golf or play competitive style complete with score cards.

### Vardon Golf Club

Minot, ND | 7101 County Road 15 W | 701-852-0312  
Formally the Minot Country Club, hosting golfers since 1929 but devastated by 2011 flooding, then rebuilt and rebranded as Vardon Golf Club, this golf course offers a memorable golfing experience for all types of players. Come out for a great round of golf or just to grab some food in the bar/grille.

### Wildwood Country Club Golf Course

Burlington, ND | 8401 Highway 15 | 701-725-4653  
Wildwood Country Club is an 18-hole regulation length golf course. Offers amenities such as a driving range, pull carts, riding carts, lessons, pro shop gear and great dining.

**Bully Pulpit™**  
GOLF COURSE

**ESCAPE TO ONE OF AMERICA'S TOP 100 PUBLIC GOLF COURSES**  
**BULLY PULPIT IS CHISELED RIGHT OUT OF THE NORTH DAKOTA BADLANDS IN A SITE UNLIKE ANY IN THE WORLD.**  
**A ROUND HERE IS ONE YOU WON'T SOON FORGET.**

MEDORA.COM





Quading in North Dakota

**Riding Off Highway Vehicles**

Registered OHVs literally have thousands of miles of riding opportunities in North Dakota. An off-highway vehicle is any wheeled motorized vehicle not designed for use on a highway and capable of cross-country travel on land, snow, ice, marsh, swampland, or other natural terrain.

Riding is allowed on:

- A paved highway posted with a speed limit not exceeding 55 miles per hour.
- A licensed driver over 16 years of age may operate a registered Class III OHV on a paved highway designated and posted at a speed not exceeding 65 miles per hour.
- The highway right of way, bottom of the ditch or along the outslope. It is illegal to operate on the shoulder or inside slope.
- A gravel, dirt, or loose surface roadway.

Riding is NOT allowed on:

- Controlled access highways/interstates
- Posted or restricted public/private property that is regulated by local ordinances
- State Parks, State Recreation Areas, Historic Sites or Wildlife Protection and Management Areas
- Tree nursery or planting areas
- Railroad right of ways
- Motorized trails designed and leased for snowmobiles

**Public lands open to OHV riding:**

- **Pembina Gorge** - Pembina Gorge trails will be open to OHV recreation starting Memorial Day weekend.
- **St. John's OHV Park** - Located NW of Rolla in the town of St. John.
- **Little Missouri National Grasslands** - Riders will find several hundred miles of riding opportunities. OHVs must stay on established roads and trails.
- **Roughrider OHV Trail** - A 16-mile trail managed by the North Dakota Parks and Recreation Department. The trail is located 30 miles south of Mandan on Highway 1806; it begins at the Fort Rice Campground, travels north on an old railroad bed, and ends at Little Heart Bottoms.
- **Kimball Bottoms Recreation Area** - Also known as, The Desert, this 400-acre play area is managed by the U.S. Army Corps of Engineers and is located 8 miles south of Bismarck, ND.



Pembina Gorge



# MAGIC CITY



## HARLEY-DAVIDSON MINOT, ND



*WE SELL*

- NEW & USED H-D™ MOTORCYCLES
- GENUINE H-D™ PARTS & ACCESSORIES
- GENUINE H-D™ APPAREL & HOME GOODS

**6701 HIGHWAY 83 S • MINOT, ND 58701**  
(2 MINUTES SOUTH OF WALMART)

**701-839-6330 • WWW.MAGICCITYHDCOM**





# NODAK SPEEDWAY

MINOT, NORTH DAKOTA  
EST. 1953

# 2021 SCHEDULE

**MAY 2ND SEASON OPENER**  
H - SM - ST - M / 7 P.M.  
SPONSORED BY ENERBASE

**MAY 9TH MOTHER'S DAY**  
H - SM - ST - M / 7 P.M.

**MAY 16TH MOTHER'S DAY DIRT SERIES**  
H - SM - ST - M / 7 P.M.

**MAY 23RD MOTHER'S DAY DIRT SERIES**  
H - SM - ST - M / 7 P.M.

**MAY 30TH MOTHER'S DAY DIRT SERIES**  
SM - SC - ST - M / 7 P.M.  
SPONSORED BY DAKOTA TRUCK AND FARM

**JUNE 6TH MAGIC CITY DIRT SERIES**  
H - SM - ST - M / 7 P.M.  
SPONSORED BY R. CAPELLI / FINISHLINE BURGERS

**JUNE 13TH TOUGHER THAN DIRT TOUR**  
H - SM - SC - ST / 7 P.M.

**JUNE 20TH FATHER'S DAY**  
H - SM - ST - SC - M / 7 P.M.  
SPONSORED BY QUALITY DIRT WORKS

**JUNE 27TH MAGIC CITY DIRT SERIES**  
H - SM - ST - M / 7 P.M.  
SPONSORED BY DYNAMIC AUTO / VISION ZERO

**JULY 4TH INDEPENDENCE DAY**  
H - SM - SC - SL - W / 7 P.M.  
SPONSORED BY TOO DARK MOTORSPORTS

**JULY 11TH DAKOTA CLASSIC MODIFIED TOUR**  
ST - M / 6 P.M.  
SPONSORED BY BULLET TRANSMISSION

**JULY 26TH ENDURO AUTO RACE**  
NORTH DAKOTA STATE FAIR / 7 P.M.

**AUG. 8TH NLRA LATE MODELS**  
H - SM - SC - LM / 7 P.M.  
SPONSORED BY SCHATZ CROSSROADS

**AUG. 15TH MAGIC CITY DIRT SERIES**  
SM - SC - ST - M / 7 P.M.  
SPONSORED BY TUFF TRUCKS

**AUG. 22ND MAGIC CITY DIRT SERIES**  
H - ST - M - W / 7 P.M.

**AUG. 29ND CHAMPIONSHIP NIGHT**  
H - SM - SC - ST - M / 7 P.M.

**SEPT. 3RD MOTOR MAGIC NIGHT #1**  
H - SM - ST - M / 7 P.M.

**SEPT. 4TH MOTOR MAGIC NIGHT #2**  
H - SM - SC - ST - M - SL - SP / 5 P.M.  
HALL OF FAME NIGHT



**SEPT. 5TH MOTOR MAGIC NIGHT #3**  
H - SM - SC - ST - M - SL / 5 P.M.



H - HOBBY STOCK, SM - SPORT MOOS, SC - SPORT COMPACTS  
ST - STOCK CARS, M - MODIFIEDS, W - WINGLESS SPRINTS  
SL - SLINGSHOTS, SP - SPRINT CARS, LM - LATE MODELS

LOCATED ON THE NORTH DAKOTA STATE FAIRGROUNDS  
RACELINE @ 701-822-RACE (7223)  
**WWW.RACENODAK.COM**





# NOWO PEN IN MINOT!

Located on Minot  
Air Force Base

Serving the military and civilians  
with over 30 degrees online!



Columbia College is proud to help members of the military and their families advance their education.



### FLEXIBLE CLASSES

Classes offered on base and over 30 programs offered online.



### TRANSFER FRIENDLY

Transfer military experience and up to 90 college credit hours.



### ACCELERATED PATHS

8-week classes start six times a year and relocate if you do.



### ENJOY Tuition<sup>®</sup>

No fees, no book costs, no surprises.



### MILITARY FAMILY GRANTS

Programs to help military spouses and dependents pay for college.

### Learn more about how we support the military.

Contact us today

(701) 727-8386

Minot@CCIS.edu

[Military.CCIS.edu](http://Military.CCIS.edu)



Private. Non-Profit. Accredited.

MILITARY FRIENDLY SINCE 1973





**Paddle On North Dakota | Mandan, ND**

**Stand Up Paddle Boards**

The stand up paddle board can be as challenging as you make it - can you imagine doing yoga while floating down the Missouri River? It is totally doable!

**Canoes**

Bringing stuff? Our 17ft Canoes can pack ALOT of gear! They can also fit 2 adults or a few kids.

**Kayaks**

Kayaks glide through the water with ease. More maneuverable than canoes, they also have some space to stow gear.

**Tandem Kayaks**

Kayak with a friend... do less work! Paddling is much easier in a tandem. Fits 2 people plus some of your stuff.

**Van Hook Resort | New Town, ND**

**Fishing Boats & Kayaks**

Predator single person fishing kayaks that come with stabilizer bar for stand up casting, fish stringer, raised seat, landing net, rod holders and more! Heron Twin, 2 person fishing or touring kayaks. Sleek and stable design, comfort molded seats. Perfect one or two adults or one adult and a couple smaller children. Heron Junior, single person youth kayak. Stable, safe and tons of fun for young paddlers!

**Stand Up Paddle Boards**

Walk on water! Stable design for paddlers of all ages and skill levels. Rental includes life jackets and brief instruction for first time paddlers

**Woodland Resort | Devils Lake, ND**

**Fishing Boats & Pontoons**

Alumacraft Fishing Boats, deluxe fishing style Avalon pontoons, and deluxe cruise-fish style Avalon pontoons. All rentals come with fuel, life jackets, landing nets, minnow buckets, and are well maintained and guaranteed dependable. Rent by the day, 1/2 day, or hour. Special week packages. Full-day rentals are required on weekends and holidays.

**Fort Stevenson State Park**

**Garrison Marina**

Aqua Pads, Bikes, Canoes, Fat Tire Bikes, Kayaks, Kicksleds, Motorized Boats, Boats, Pontoons, Paddleboats.

**Lake View Lodge | Devils Lake, ND**

**Fishing Boats**

3- 18 ft Lund Alaskans, with 4 pedestal seats and a 75 hp 4-stroke motor. Side counsels.

**Lake Sakakawea | Pick City, ND**

The Park rents a variety of recreational equipment including paddle boats, canoes, kayaks, paddle boards and wave runners. All equipment is housed and rented at the park swim beach. Personal Floatation Devices (PFD's) are offered on loan for both adults and children.

**Dakota Cyclery Mountain Bike Adventures | Medora, ND**

**Mountain Bikes**

We have a wide variety of rentals - from high end full suspension for the Maah Daah Hey to flat bar road bikes for the nearby National Park Loop to cruisers for hitting the streets of little Medora.

**Epic Sports | Bismarck, ND**

**Bikes**

The Bismarck-Mandan area is filled with bike trails — paved and off-road, just waiting for you to ride. If you're from out-of-town, or your bike is in the shop, consider renting one of our bikes. Our rental bikes are always kept in tip-top shape and are of the highest quality. Our staff will help you select the best bike for you and what you intend to do. We also have bike trail maps available, and can help get you where you need to be to find that perfect trail. We are also one of the last stops before the legendary Maah Daah Hey Trail in Western North Dakota.





# Firestone

FOR GETTING OUT THERE

UP TO

# \$140

TOTAL SAVINGS

OFFER VALID 05.13.21-07.08.21



301 E. Central Ave.  
Minot, ND 58701  
701-852-3385

GET UP TO

# \$90

BACK BY MAIL ON A FIRESTONE VISA® PREPAID CARD



"The Tire & Service Professionals"  
Since 1939

**\$60** WITH PURCHASE OF 4 ELIGIBLE TIRES + **\$30** WHEN YOU USE YOUR CFNA CREDIT CARD

PLUS ADDITIONAL INSTANT SAVINGS OF **\$50** WHEN EXISTING OR NEW CFNA CREDIT CARD IS USED

**"Sliding Scale" Service Coupon**

## SAVE!

SERVICE TOTALS:	RECEIVE DISCOUNT:
\$ 50.00 - 99.99	\$10.00 OFF
\$ 100.00 - 199.00	\$20.00 OFF
\$ 200.00 - 299.00	\$30.00 OFF
\$ 300.00 - 499.00	\$40.00 OFF
\$ 500.00 or MORE	\$50.00 OFF

Must present coupon to get this offer. Savings off regular price. Will be deducted from participating retailer's price at the time of purchase. Excludes tax. Additional charge for shop supplies may be added. No other discounts apply. Redeem at a participating Pomps location. Offer ends 6/30/21.

**Computerized Alignment**

## \$10 OFF

Regular Price

**Includes:**

- Front caster, camber & toe set to manufacturer's specifications, where applicable
- Reference & compensation, or adjustment of thrust line, depending on alignment type

(Many front wheel drive vehicles today require rear wheel adjustment at an additional cost.)

Must present coupon to get this offer. Savings off regular price. Most vehicles. No other discounts apply. Excludes some 4-wheel drive vehicles. Front wheel drive vehicles may require rear wheel adjustment at an additional cost. Vehicles with Electronic Stability Control may be able. Will be deducted from participating retailer's price at the time of purchase. Additional charges for shop supplies may be added. Redeem at a participating Pomps location. See store for complete details. Offer ends 6/30/21.

**Brake Special**

## \$20 OFF

Regular Price (ABS)

**Any Brake Service of \$100 or More**  
(If inspection reveals the need for service.)

**Come see us if...**

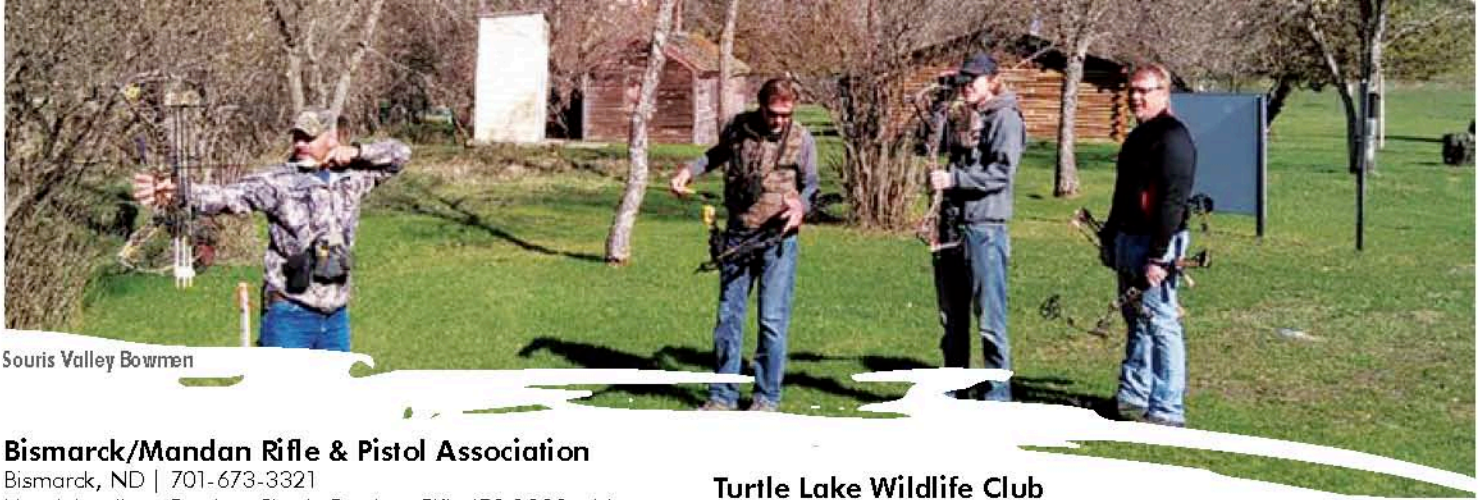
- Your brake warning light is on
- You notice a change in braking pressure
- You hear grinding or squealing

Must present coupon to get this offer. Savings off regular price. Most vehicles. No other discounts apply. Will be deducted from participating retailer's price at the time of purchase. Additional charges for shop supplies may be added. Redeem at a participating Pomps location. See store for complete details. Offer ends 6/30/21.

From May 13 - July 8 get \$60 back on Champion, Destination, Firehawk & WeatherGrip tires. Limit 2 per household. Participating U.S. stores only. Claim submission required by July 18, 2021. Not combinable with other offers. Certain restrictions apply. Void where prohibited. See FirestoneRewards.com for details. Prepaid Card is issued by The Bancorp Bank, Member FDIC, pursuant to a license from Visa U.S.A. Inc. and may be used everywhere Visa debit cards are accepted. Prepaid Cards are issued in connection with a reward. Prepaid Card terms, conditions, and expirations apply. All trademarks and brand names belong to their respective owners. Receive the \$90 Prepaid Card when you make a qualifying tire purchase with any eligible CFNA credit card account. Prepaid Card cannot be used to pay any CFNA credit card balance. CFNA credit card subject to credit approval. The Bancorp Bank is not affiliated in any way with this credit card offer and does not endorse or sponsor this credit card offer.

†Conditions apply. See FirestoneTire.com/warranty for details.  
©2021 Bridgestone Americas Tire Operations, LLC. All rights reserved.





Souris Valley Bowmen

**Bismarck/Mandan Rifle & Pistol Association**

Bismarck, ND | 701-673-3321  
Muzzleloading, Outdoor Pistol, Outdoor Rifle (50-1000 yds),  
Pistol Silhouette, Rifle Silhouette.

**Capital City Sporting Clays LLC**

Bismarck, ND | 701-220-1003  
Skeet, Sporting Clays.

**Lake Region Shooting Sports Association**

Devils Lake, ND | Box 207 | 701-662-5301  
Archery, Indoor Pistol (50 ft), Indoor Rifle (50 ft), Muzzleload-  
ing, Outdoor Pistol (25,50,75,100,150,200,300 ), Outdoor Rifle  
(25,50,75,100,150,200,300 ), Pistol Silhouette, Rifle Silhouette,  
Skeet, Trap.

**Nodak Arms Pistol Range**

Minot, ND | 601 104th St SE | 701-839-0005  
2 Lane Range is 2 lanes. \$1/minute gets you access to the entire  
range regardless of the number of shooters in your group. We  
have over a dozen hand guns if you want to try something differ-  
ent or do not have your own firearm. Open 10am-6pm Monday-  
Saturday

**Minot Rifle & Pistol Club**

Minot, ND | 1600 62nd St SW | 701-838-7882  
Facilities include a 25 yard, 12-lane indoor range with class-  
room; 120 acres outdoor range complete with multiple shooting  
bays for pistol and longer range rifle bays. Outdoor range is for  
members and their guests with passes only. Indoor range is for  
members and the general public.

**Rugby Shooting Club**

Rugby, ND | Box 153 | 701-776-2879  
Airgun, Outdoor Pistol (25 & 50 yds), Outdoor Rifle (25, 50, 75,  
100 & 200 yds), Pistol Silhouette, Rifle Silhouette, Sporting Clays,  
Trap.

**Souris Valley Bowmen**

Minot, ND | 6175 County Road 12 W | 701-240-6892  
The Souris Valley Bowmen archery club maintains a 45-acre  
outdoor range from May 1st until November, located 3 miles  
west of Minot, 1/2 mile southwest of the Trestle Valley railroad  
trestle. Full and Partial Year memberships are available as well  
as Individual and Family.

**Spartan Firearms**

Minot, ND | 7051 Hwy 2 & 52 W | 701.838.4867  
12 lane shooting range features state-of-the-art equipment to  
ensure your experience is top notch, safe, and fun. Whether  
you are a novice or experienced shooter, our shooting range is  
the best place to practice and improve your shooting skills. Our  
range is entirely indoors, so you can shoot comfortably with your  
friends and family all year round.

**Turtle Lake Wildlife Club**

Turtle Lake, ND | 701-448-2687  
Trap.

**Public Shooting Ranges**

The North Dakota Game and Fish Department manages five  
public shooting ranges on its wildlife management areas. These  
are generally open to the public year round. However, they may  
periodically close for maintenance, improvements and events.

**Lewis and Clark WMA**

Six miles southwest of Williston

**Little Heart Bottoms**

12 miles south of Mandan off ND Highway 1806

**MacLean Bottoms**

Two miles south of ND Hwy 1804, 15 miles SE of Bismarck

**Riverdale WMA**

Two miles southwest of Riverdale

**Wilton Mine WMA**

Two miles east of Wilton



**For All your Automotive Needs**

- 100 years in the community
- Paying top \$\$ for your trade
- The best used inventory in Minot
- 8 Time President's Award Winner



**WESTLIE FORD**

500 S BDWY, MINOT ND 58703  
701-852-1354  
www.westliemotors.com







**\$100 OFF**

COMPLETE PAIR OF  
EYEGLASSES

**WE'RE  
OPEN  
TO SAFELY  
SERVE  
ALL OF YOUR  
EYE CARE  
NEEDS**



FASHION  
FOR EVERYONE

***Sterling*  
OPTICAL.**

**Minot** | 3220 S. Broadway  
701.852.5200

[SterlingOptical.com](http://SterlingOptical.com)

Most Insurances Accepted | Financing Available

Help us prevent the spread of COVID-19  
by following safety guidelines.

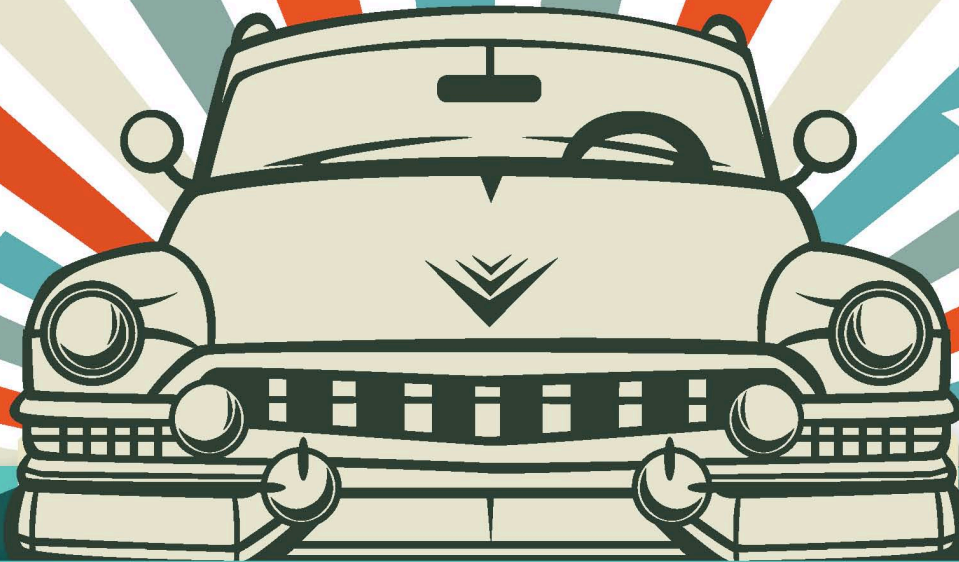
\*Must purchase frames and lenses. See store for details. Some restrictions may apply. Not combinable with insurance or other offers. Limited time offer.





Music  
Chloe  
Marie

Raffles



# Car Show and More

## Saturday, August 7

10:00am-4:00pm  
Main Street, Bottineau, ND

# 2021

**CRAZY  
DAYS**  
Shopping Deals

**KID  
EVENTS**  
All Day

**Kiwanis tractor pull  
Dunk tank  
Tractor parade  
Bike parade**

**Rock painting  
Food trucks  
Vendors**

**Bike giveaway  
Nickel in a haystack  
Power Wheels derby  
Farmers Market**

## CAR SHOW

**Car and Tractor Registration 8:00-11:30am**

*Pre-Registration Encouraged at Bottineau.com*

**For more information**

**Bottineau Chamber of Commerce  
701.228.3849 or e-mail: [bcc@utma.com](mailto:bcc@utma.com)**

**[bottineaucarshow.com](http://bottineaucarshow.com)**



**Cars \* Tractors \* Snowmobiles \* Motorcycles \* Boats**