

Inserts:

- Bronson's Marketplace, Beulah
- Krause's Market, Hazen

PRSR STD
US POSTAGE
PAID
Permit No. 22
Garrison, ND

Coal Country Dollar Saver

ECRWSS

Monday, Sept. 16, 2019
Vol. 51, No. 28

Published weekly by the Beulah Beacon & Hazen Star
324 2nd Ave. N.E., Beulah, N.D. 58523 • 873-4381
Box 508, Hazen, N.D. 58545 • 748-2255

Postal Patron
Deliver by Monday

AUGUST 1 - SEPTEMBER 30



GET UP TO

\$200 BACK*

AN ADDED BONUS OF

\$25 MORE**

ON A SET OF 4 SELECT GOODYEAR® TIRES PURCHASED WITH THE GOODYEAR CREDIT CARD

ON ANY SERVICE OF \$50 OR MORE PURCHASED WITH THE GOODYEAR CREDIT CARD

By online or mail-in rebate. Rebates paid by Goodyear Prepaid Mastercard® on purchases made between August 1 and September 30, 2019. (Service includes installation, parts and labor. Excludes tire purchase, shop supplies, disposal fees and taxes.)



LIGNITE TIRE

300 19th St. NW
Hwy 49 Beulah, ND
701-873-7711



GET **\$100** BACK +
ON 4 SELECT GOODYEAR TIRES

GOODYEAR ASSURANCE® WEATHERREADY®
AN ADDED BONUS OF UP TO **\$100** MORE WHEN YOU USE THE GOODYEAR CREDIT CARD

GOODYEAR EAGLE® EXHILARATE™
AN ADDED BONUS OF UP TO **\$100** MORE WHEN YOU USE THE GOODYEAR CREDIT CARD

GET **\$80** BACK +
ON 4 SELECT GOODYEAR TIRES

GOODYEAR EAGLE® F1 ASYMMETRIC ALL-SEASON, SCT+ROF
AN ADDED BONUS OF UP TO **\$40** MORE WHEN YOU USE THE GOODYEAR CREDIT CARD

GOODYEAR WRANGLER® DURATRAC™
AN ADDED BONUS OF UP TO **\$40** MORE WHEN YOU USE THE GOODYEAR CREDIT CARD

GOODYEAR WRANGLER® ALL-TERRAIN ADVENTURE W/KEVLAR®
AN ADDED BONUS OF UP TO **\$40** MORE WHEN YOU USE THE GOODYEAR CREDIT CARD

GET **\$60** BACK +
ON 4 SELECT GOODYEAR TIRES

GOODYEAR ASSURANCE® COMFORTRED™ TOURING
AN ADDED BONUS OF UP TO **\$60** MORE WHEN YOU USE THE GOODYEAR CREDIT CARD

GOODYEAR ASSURANCE® MAXLIFE™
AN ADDED BONUS OF UP TO **\$60** MORE WHEN YOU USE THE GOODYEAR CREDIT CARD

GOODYEAR EAGLE® TOURING
AN ADDED BONUS OF UP TO **\$60** MORE WHEN YOU USE THE GOODYEAR CREDIT CARD

GOODYEAR WRANGLER® FORTITUDE HT
AN ADDED BONUS OF UP TO **\$60** MORE WHEN YOU USE THE GOODYEAR CREDIT CARD

GOODYEAR EAGLE® SPORT ALL-SEASON, SCT+ROF
AN ADDED BONUS OF UP TO **\$40** MORE WHEN YOU USE THE GOODYEAR CREDIT CARD

GET **\$40** BACK +
ON 4 SELECT GOODYEAR TIRES

GOODYEAR ASSURANCE® ALL-SEASON
AN ADDED BONUS OF UP TO **\$20** MORE WHEN YOU USE THE GOODYEAR CREDIT CARD

GOODYEAR WRANGLER® TRAILRUNNER AT®
AN ADDED BONUS OF UP TO **\$20** MORE WHEN YOU USE THE GOODYEAR CREDIT CARD

Maintenance Inspection

FREE

- Tires Rotated And Fluids Checked At No Charge!
- Tires, brakes and suspension
 - Exhaust and air filters
 - Battery test
 - Headlights, bulbs and wipers
 - Belts and hoses
 - Shocks and struts

Filter Savings

\$5.00 OFF
Regular Price

CABIN FILTER OR
ENGINE AIR FILTER

Must present coupon to get this offer. Most vehicles. No other discounts apply. Will be deducted from participating retailer's price at the time of purchase. Consult owner's manual for vehicle manufacturer's recommended service intervals. Fluid disposal charge may apply. Additional charge for shop supplies, up to 7% or \$25 maximum, may be added. Redeem at Lignite Tire only. See store for complete details. Special state exceptions: FL - waste fluid fee may apply. CA - \$2.50 fluid disposal fee applies but no additional charge for shop supplies applies. PA - no fluid disposal charges apply. NY - no fluid disposal or additional charge for shop supplies applies. Cash value 1/50c. Offer ends 09/30/2019.

Car Care Package

\$15.00 Coupon Price

- Lube, oil change and new filter
- Four-tire rotation
- Check and top off all fluids under the hood
- Complete visual inspection
- Inspect battery
- Check tires for wear and adjust air pressure
- Examine all belts and hoses for cracks and proper tension

Must present coupon to get this offer. Most vehicles. No other discounts apply. Additional charge for shop supplies, up to 7% or \$25 maximum, may be added. Redeem at Lignite Tire only. See store for complete details. Special state exceptions: CA and NY - no additional charge for shop supplies applies. Cash value 1/50c. Offer ends 09/30/2019.

Preventive Maintenance

\$15.00 OFF
Regular Price

- ON IMPORTANT PREVENTIVE MAINTENANCE SUCH AS:
- Cooling System Fluid Service
 - Brake Fluid Service
 - Power Steering Fluid Service
 - Differential Fluid Service
 - Automatic Transmission Fluid Service

Offer expires 09/30/2019. Must present coupon to get this offer. Most vehicles. No other discounts apply. Will be deducted from participating retailer's price at the time of purchase. Additional charge for shop supplies, up to 7% or \$25 maximum, may be added. Redeem at Lignite Tire only. See store for complete details. Special State Exceptions: CA and NY - no additional charge for shop supplies applies. Cash value 1/50c.

Fuel System Service

\$15.00 OFF
Regular Price

- Helps reduce harmful emissions and aids in restoring fuel system efficiency
- Motorists Assurance Program suggests a Fuel System Service should be performed annually or every 15,000 miles
- Consult owner's manual for vehicle manufacturer's recommended service intervals
- Helps reduce harmful emissions and aids in restoring fuel system efficiency
- Motorists Assurance Program suggests a Fuel System Service should be performed annually or every 15,000 miles
- Consult owner's manual for vehicle manufacturer's recommended service intervals

Must present coupon to get this offer. Most vehicles. No other discounts apply. Will be deducted from participating retailer's price at the time of purchase. Additional charge for shop supplies, up to 7% or \$25 maximum, may be added. Redeem at Lignite Tire only. See store for complete details. Special state exceptions: CA and NY - no additional charge for shop supplies applies. Cash value 1/50c. Offer ends 09/30/2019.

CLEARY BUILDING CORP. **We Protect What You Value!**
RVs, ATVs, Boats, Cars, Trucks, Machinery & Much More

FEATURING: **FABRAL** **Need Financing? We can help you with that!**

- Strongest Structure in the Industry
- Debt Free Since 1985
- Builders Risk & Full Insurance

Contact us today for a **FREE consultation!**
BISMARCK, ND 701-751-1038
ClearyBuilding.com • 800-373-5550

REPAIRS AHEAD! **We have your auto repair needs covered Free Estimates**

- Engine Diagnostics Scan
- Oil Changes
- Tire Rotations
- Small Engine Repair
- Coolant Systems
- A/C
- Brakes
- Charging Systems
- Engine Rebuild
- Transmission Repair
- Axle Repair
- Clutch Repair
- Fuel Systems
- Suspension
- Minor and Major Tune Ups
- Ignition System
- Windshield Repair & Replace
- Tire Repair & Sales - All Brands

Wanted used oil drop off - Over 50 gallons we will pickup

AT AUTO REPAIR
NAPA AUTO CARE CENTER
712 County Road 21 • 873-2330

Auctioning 230 Acres +/- in NW Oliver County
Wednesday, October 2nd, 2019
6 p.m. CT
Auction will be conducted at the Cobblestone Inn, Beulah, ND

Legal Description: Parcel of the S2 - Sec. 8-143-87

Tillable Acres: 215.1 +/- (These acres will be surveyed)

2018 Taxes: SW4 \$339.13 SE4 \$294.67

Owner: Kelly Neuberger

For questions please call **Shane Wolff at (701) 870-9090**

For additional information on this auction and upcoming auctions go to www.wolffauctioneers.com

Wolff Auctioneers
Visit our web site: www.wolffauctioneers.com

SHANE WOLFF LIC. NO. 27 701-983-4573 701-870-9090 (CELL)
HEAD CLERK: PAULA JO WANNER LIC. NO. 564 701-870-1406 (CELL)

Hazel's Recreational Track
West of Hebron, ND
off I94 Exit 97

NEW DATE!!!!
Saturday, Sept. 21- 4 p.m. CT

TUFF TRUCKS

Any Stock Car or Pickup
Registration: 1-3 p.m. CT, \$30 Entrance Fee
100% Payback registration fee plus 1/2 gate admission to 1st, 2nd & 3rd place

Admission: Ages 6 & Up \$10.00
Concessions Available

To register or for questions call:
Sharla Zuroff 701-870-4084 Jr Zuroff 701-260-2145
Grant Walth 701-290-2295

MINERS FANS!!!!

Come get your New Miners football gear at the Beacon!!

We have Adult Long Sleeves and Hoodies Youth T-shirts and Hoodies!

Beulah Beacon

324 2nd Ave NE, Beulah • 873-2383

VERYL MORAST ESTATE AUCTION
Sunday, September 22, 2019 - 12:30 PM CT
55 County Rd. 13, Zap, ND

ATV'S & SNOWMOBILES:

- 1988 Yamaha Blaster ATV-runs
- 1987 Yamaha 350 Elec. ATV-runs
- Yamaha 175F IT motorcycle, 3181 mi-runs
- 1985 Yamaha moto 4-runs
- 1984 Yamaha 225 DX 3-wheeler-runs
- 1979 Ski-Doo Everest snowmobile-runs
- 1980 Yamaha SS 440 snowmobile-runs
- Ski-Doo Everest snowmobile, not running
- Polaris Indy 600XC snowmobile, 2516 mi, no title, not running

Contact: Merle Fischer 701-870-0858

SHOP & GARDEN:

- Cratsman ATV floor jack, Buz Box AC welder, 230 Amp
- 300 gal gas tank on metal stand
- Galvinzed water tanks: (1) 300 gal, (1) 200 gal

GUNS:

- Rem. 22-250, mod. 778, SN:057369 w/ Bushnell scope
- Mauser 7mm, mod. 1895, SN: G7991 w/Bushnell scope
- Glenfield 22LR, mod. 60, auto, SN: 23529632 w/Tasco scope
- Master Mag 12 ga. mod. CC880, SN: 6640544
- Ruger 357 Mag., mod. Black Hawk, SN: 34-62016
- Trail cam, 22-250 ammo, Tasco scope, Knives, 38 special ammo

COLLECTIBLES:

- (6) Assorted vintage toys, (6) Wagon wheels
- Antiques: oil jars/spouts, Yard decor, Cream cans & Boiler
- (8) Vintage Oak folding chairs, Kids sleigh
- Vintage 3-piece Bedroom set: vanity, chest of drawers, full sized bed
- (2) Horse drawn cultivator, (1) Antique cultivator
- (1) 5' older wooden tobogen sled, (1) Wooden Handmade
- Theo-A-Kochs barber chair

HOUSEHOLD:

- Lots of misc. items

ANTIQUUE TOYS:

- Delmar Kruckenber: 701-202-4415
- 1980 Ertl pedal tractor-working condition
- 1970 sit on digger kits toy
- 1940-training tricycle, made in England
- 1960 Mighty Tonka car carrier
- 1987 Express Airplane made from hard cardboard
- Antique Tricycle-bicycle rear wheel chain drive

ANTIQUUE TOYS:

- 1950 Penco Flyer wagon
- Vintage AMF Junior tricycle
- 1952 BNCStation wagon pedal car with star grille
- 1950 Vintage Angeles bicycle trike
- Mercedes Benz Ts-105 child pedal car-like new

GUEST CONSIGNOR: Carey Van Pelt/ Randy Van Pelt Estate

CAR:

- 1980 Z28 Chevy Camaro, 38,652 mi, one owner, 4spd., manual trans., good tires, V-8 5.7, 350 eng.-good condition.

SHOP/YARD:

- Gladiator GearWall Shelving, 4 1/2 boxes, new, 4' length
- Dewalt Emglo Compressor, w/cart & wheels
- DynaGlo Portable Heater, 2 ton floor jack, (2) shop vacs
- Rockwell 9" bandsaw w/light, Workmate 400 portable work bench, Bench top table saw
- Wagner power roller, Workx blower/vac, 48" pull behind lawn dethatcher
- Craftsman tool chest, Craftsman 6" bench grinder, variable spd.
- Wrenches, Saws, Hammers, Pliers, Cords, Shop lights, Power tools, Hand tools, Ladders, Shovels, (2) sm propane tanks, (2) sets of saw horses, Painting supplies, Plastic sheeting, Shelving, Rubbermaid storage unit, Fishing poles & Tack, Set of Skis, & Various Other Shop Items

AUCTIONEERS NOTE: ALL ITEMS HAVE BEEN VERY WELL MAINTAINED & CLEAN!

For additional information on this auction and upcoming auctions go to www.wolffauctioneers.com

Wolff Auctioneers
Visit our web site: www.wolffauctioneers.com

SHANE WOLFF LIC. NO. 27 701-983-4573 701-870-9090 (CELL)
HEAD CLERK: PAULA JO WANNER LIC. NO. 564 701-870-1406 (CELL)

VALID AUGUST 28-SEPTEMBER 30

ACE
The helpful place.

**RED HOT
BUYS**

Miracle-Gro
Moisture Control Potting Mix
Protects Against Over & Underwatering

SALE \$13.99 - \$2 WITH ACE REWARDS CARD*
\$11.99

Miracle-Gro® Moisture Control® Potting Mix, 2 Cu. Ft. 7301609
Limit 2 at this price.

SALE \$13.99 - \$2 WITH ACE REWARDS CARD*
\$11.99

SALE \$18.99 - \$7 WITH ACE REWARDS CARD*
\$11.99

SALE \$14.99 - \$3 WITH ACE REWARDS CARD*
\$11.99 each

Ortho® Home Defense® Insect Killer for Indoor & Perimeter, 1.1 Gal. 7508088
Limit 2 at this price.

Roundup® Ready-To-Use Weed & Grass Killer III with Pump 'N Go™, 1.33 Gal. 7196520
Limit 2 at this price.

Scotts® EZ Seed®, 3.75 Lb. 7229412, 7206428
Limit 2 at this price.

Zinsser® Mold Killing Primer
Kills mold, mildew, odor-causing bacteria and fungal organisms. 1534122
Qt., 1534114... \$10.99

SALE
\$29.99 gallon

\$12.99 each

Flex Seal®, Flex Tape®, Flex Glue® or Flex Shot® Rubber Sealant
6219107, 6238554, 6299950, 6406391, 6406383, 6715171, 6665004, 6266993, 6266985, 6715163

AS SEEN ON TV

BUY TWO GET ONE FREE

Filtrete® Micro Allergen Defense Air Filter
Assorted sizes available. 4005252
Lowest priced item is free.

SALE 2 FOR \$12.00

Ace Wild Bird Food, 20 Lb. 81995

SALE 2 FOR \$6.00

RV/Marine Antifreeze, Gal. 81003

Ace Motor Oil SAE 30, 5W-20, 5W-30, 10W-30, 10W-40, 8706707, 8706645, 8706608, 8706784, 8706731

SALE 2 FOR \$7.00

Great Stuff® Gaps & Cracks or Big Gap Filler Foam Sealant, 12 Oz. 13322, 19077

BUY ONE GET ONE FREE

Ace Insect Killers
7415110, 7415126, 7415136, 7415144

Milwaukee® M18™ FUEL™ Sawzall® Reciprocating Saw 2550457

\$199.99

BUY THIS GET THIS FREE

Milwaukee® M18™ REDLITHIUM™ Battery Pack 2548998 **\$129.99** VALUE

STANLEY IRWIN TOOLS

Stanley® & Irwin® Tools & Accessories
2071439, 2319994, 2378388, 2118859, 2409266, 29138

YOUR CHOICE **\$9.99** each

Milwaukee® Tools & Accessories
2408672, 2472595, 2802635, 2813418

YOUR CHOICE **\$14.99** each

SALE 3 FOR \$9.99

Mrs. Meyer's® Clean Day Multi-Surface Cleaner, Dish Soap or Hand Soap
9149444, 1381177, 1381383

MIX & MATCH!

MUST BUY 3 OR MORE

Werner® 8' Type II Fiberglass Stepladder or 16' Type III Aluminum Extension Ladder 107945, 10221

SALE \$79.99 - \$10 WITH ACE REWARDS CARD*
\$69.99 each

Ventilated Plastic Shelving Unit 5314737
Products not included.

SALE \$34.99

BUY ONE GET ONE FREE

MIX & MATCH!
Ace Yard & Garden Tools
Heavy-duty fiberglass handles.
7011273, 7011414, 7012818, 7012859

\$21.99 each

SALE \$17.99 - \$2 WITH ACE REWARDS CARD*
\$15.99

Ace Winterizer Weed & Feed
Covers 5000 sq. ft. 7475627
Limit 2 at this price.
15,000 Sq. Ft., 7475635... SALE \$45.99
\$5 With Ace Rewards Card
You Pay \$40.99. Limit 2 at this price.

SALE \$16.99 - \$2 WITH ACE REWARDS CARD*
\$14.99

Ace Winterizer
Covers 5000 sq. ft. 7475536
Limit 2 at this price.
15,000 Sq. Ft., 7475577... \$36.99
\$5 With Ace Rewards Card
You Pay \$31.99. Limit 2 at this price.

SALE \$9.99 - \$2 WITH ACE REWARDS CARD*
\$7.99 each

Scott's® Shop Towels or Rags In A Box, 200 Ct. 1314281, 19365
No lint.

J & M ACE Hardware

128 W. Main • Beulah • Phone 873-4318 • Fax 873-4745
STORE HOURS: Monday-Friday 7 a.m.-7 p.m. • Saturday 7 a.m.-6 p.m. • Sunday 12-5 p.m.

SALE \$23.99 - \$2 WITH ACE REWARDS CARD*
\$21.99

Scotts® Turf Builder® WinterGuard® Fall Weed & Feed, Covers 5000 sq. ft. 7468341
Limit 2 at this price.
15,000 Sq. Ft., 7468333... SALE \$59.99
\$5 With Ace Rewards Card
You Pay \$54.99. Limit 2 at this price.

SALE \$19.99 - \$2 WITH ACE REWARDS CARD*
\$17.99

Scotts® Turf Builder® WinterGuard® Fall Lawn Food, Covers 5000 sq. ft. 7232291
Limit 2 at this price.
15,000 Sq. Ft., 7232309... SALE \$45.99
\$5 With Ace Rewards Card
You Pay \$40.99. Limit 2 at this price.

SAVE \$2

WITH ACE REWARDS CARD*
INSTANTLY on select Ball Canning Jars & Lids
4093002, 6098574

SALE \$59.99

10' x 10' Pop-Up Canopy
8304966
12' x 12' Pop-Up Canopy. 8333386... \$119.99
Includes storage bag.

SALE \$29.99

Living Accents® 6' Fold-in-Half Table
29-1/4" H x 30" W x 72" L
Blow-mold plastic top, steel legs
8315095
Limit 2 at this price.

SALE \$12.99

Living Accents® Plastic Folding Chair
31-5/8" H x 17-3/4" W x 17"D.
8197097

SALE \$27.99 - \$5 WITH ACE REWARDS CARD*
\$22.99

Rubbermaid® Brute® 32 Gal. Commercial Grade Trash Can 70205
Limit 3 at this price.

SALE \$12.99 - \$3 WITH ACE REWARDS CARD*
\$9.99 each

Iron-Hold® Contractor Trash Bags
42 gal., 20 ct. or 55 gal., 15 ct.
4093002, 6098574
Limit 3 total at this price.

SAVE \$2

WITH ACE REWARDS CARD* INSTANTLY

on select Energizer® Batteries
Max® AA or AAA Bkpk., C or D 4pk., 9 Volt 2pk. or Lithium AA or AAA 4pk.
3380599 No Limit.

on select Duracell® Batteries
AA or AAA Bkpk., C or D 4pk., or 9-volt 2pk.
34575 Limit 5.

SALE \$179.99

EGO 56 Volt Leaf Blower
Includes 2.5 amp lithium-ion battery with charger
Up to 75 minute run time on low speed
Variable speed up to 530 cfm
7804792

SALE \$4.99 each

Heath® High Energy Suet 8/Pk., Double Suet Feeder or Ace Black Oil Sunflower Seed, 10 Lb. 8914699, 8371924, 8404196

BUY ONE GET ONE FREE

MIX & MATCH!

Kaytee® Songbird Blend®, 7 Lb. or Nut & Fruit Blend®, 5 Lb. 81053, 8123820 **\$12.99** each

Mercer County Ambulance EMT CLASS

The EMT (Emergency Medical Technician) Informational meeting Wednesday, Sept. 18 7:00 p.m. at the Hazen Ambulance Bay
Final testing could be in May or July.

If you have any questions or want to register, please call 880-2732, 748-7241 or 748-5558.



Dollar Saver classifieds ...
... We've got what you need!
873-4381
748-2255

Mul T Services & Contracting

701-748-5935
701-391-8963

"A Royal Flush Beats a Full House"

- Full Service Septic Pumping and Installation
- Drain Cleaning
- Sewer Camera - Inspection and Line Location

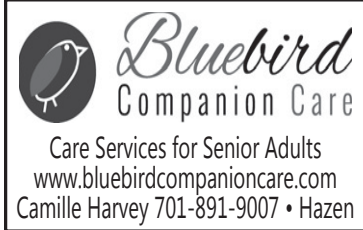



Land Stewards Inc

Hannover, ND
Agricultural, Commercial, & Residential Land Services

- General Excavation & Clearing
- Erosion Control, Seeding, & Turf Establishment
- Water, Sewer, & Septic Systems
- Water Management & Drainage Structures
- Site Development: Start to Finish

Neal Barnes 701-301-7983 nbarnes@westriv.com
Michael Beckman 701-527-6450 mbeckman@westriv.com



Bluebird Companion Care

Care Services for Senior Adults
www.bluebirdcompanioncare.com
Camille Harvey 701-891-9007 • Hazen

CASH

For Gold & Silver Jewelry and Coins.
We pay Top Dollar.

Jensen Jewelry
Hazen
748-2008

Sandys Therapeutic Massage

Sandy Goetz, Owner/LMT
120 W Main Street - Beulah, ND
701-870-1848

TADD PAINTING LLC

• Residential • Businesses
• Interior/Exterior
Licensed & Insured
Locally Owned
Terry and Deb Dickinson
880-8643
Hazen, ND

ROOFING

ALL TYPES

Locally owned - 30 years experience
Licensed and Insured

JACK JENSEN JR. ROOFING

701-891-8705

ROOFING

All types

- Barn siding • Machine building siding

J-Heart Contracting

Pride Karges • 891-2890
www.j-heartcontracting.com
Licensed and insured, Better Business Accreditation

September 22, 2019 12:00 PM CT
Richardson, Dohmann, Hebron Real Est & Guests
425 N Elm St - Hebron, ND

AUCTION

REAL ESTATE sells about 3:00 pm CT
LEGAL: Lots 14-16 Block 2 Mathew Saylor Jr 1st
Location: 425 N Elm St - Hebron, ND
DESCRIPTION: This property features a 24'X50' cemented steel frame shop with 8'X12' overhead door & 1 walk thru on (3) 50'X140' lots. Water, sewer and elect. are already at this site. Nice quiet part of town. Taxes (2018-788.46) prorated to sale date.
TERMS: Successful bidder will pay 50% nonrefundable earnest money down day of sale and balance due at closing. Have financial arrangements secured before bidding. Statements on day of sale take precedence over printed material. All Property Sold As Is, Where Is. Possession: Given at closing in approximately 30 days with up to date abstract. For inspection of property call Ross Glass 701-878-4001/701-290-4001

HOUSEHOLD: sofa & loveseat set(nice), Lazy Boy recliner & rocker recliner set, dressers, ent center, twin bed, sev head boards, oak & misc chairs, 4 folding chr set, office desks & chairs, computer desk, file cabinets, end tables, stereo w/speakers, Singer sew machine, embroidery machine, Christmas tree, Christmas balls, colored lamp, misc household
ANT/COLLECT ARMY tent, army box, army trailer, ammo box, waterfall-buffet & 3 pc bedroom set, 33 records, pitcher & basin & more YARD/GARDEN-folding dog kennel, steel post driver, 6 bicycles, Radio Flyer wagon, patio swing, gas jugs, gas weed trimmers, fertilizer spreader, skis/ men's size 10.5 boots
www.ndauctioneers.com
www.auctionzip.com

TRACTORS/SCRAPER/AUGER/MOWER -
1135 MF - diesel, hydro shift, duals, 3 hyd, tires-80% rear, 50% rear-runs good
8N Ford tractor, 5' TSC? finish mower-3 pt
Miskin 1 yd scraper auger-5hp, 220 elect motor
TRAILERS/TRUCK -
12 PJ 14' GN dump trailer-elect over hyd-NICE!
2 wheel trailers, 3/4T pickup box trailer
85 GMC 6000 2T truck-366, 15 1/2' box, roll tarp
71 GMC 4000 2T truck-motor bad
BOATS/ATV -
16' Lund boat w/trailer- 4 seats, 70hp Mercury w/elect trolling remote-Nice!
18' army boat w/army trailer
Honda ATV-4X4
CARPENTRY/RELATED- Chamberlain Lift Master commercial door operator-NIB, 15'X14' garage door, foam insulation, plywood/chipboard-new & old, 30"x90" Elder door w/side glass/day lights-new, 6' 5"X 7 1/2" double doors, mercury light-NIB, PEX tube, 2X4s, cement stakes, rebar, electrical box, tar paper, soffit tin, rain tile, yellow gas line, caution tape, platform form for scaffolding, basement jack, sono tubes, 7 step factory metal stairs w/side rails SHOP-150 gal service tank w/elect pump, 75 gal service tank w/hand pump, Diamond Plate pickup toolbox, metal work bench w/lge vise, Knack tool box, acetylene torch & oxygen tanks, sledge hammer, ax, boat gas jugs, canvas cover, 8 hole rim w/235-85R16 tire, Milwaukee circ saw, Lincoln 12v charger base-NIB, fire extinguishers, caulking guns, angle iron, assorted cabinets, 36" Rigid pipe wrench, 18" pipe wrench, pallet shelving, fire hose, sm chain binder, chain, 16 gal Craftsman shop vac, 6.5" pipe, trailer ramps, wood burning stove, welding rods, Ford/Chevy chrome push bumpers, 3 sets pickup running boards, shop lights-like new, floor jack, propane tanks, hand trailer winch, 911/Howes/oils misc hand tools

Shade Tree Experts - Business since 1974

R & C Tree Service

Now WORKING IN THE AREA

Complete Tree Service: Trimming & Removal - Stump Removal
License & Bond Insured
Modern Equipment
Excellent Work - Fair Price - Free Estimates
Call J.P Roberge 701-334-0381
or toll-free 1-800-334-1518
Credit Cards Accepted

**Tree trimming and removal • Stump grinding
Concrete Removal • Yard Fencing**

Trees and Stumps

Fully insured
Free estimates




TERNES
HAZEN, ND
748-3867 • 321-1610

Locally owned
701-748-3867
701-321-1610
Hazen, ND
Gary and Felicia Ternes

HEALTHY HAPPENINGS

September is National Recovery Month

An opportunity to increase awareness and understanding of mental and substance use disorders and encourages individuals in need of treatment and recovery services to seek help. Talk to us today about the solutions available to help you take the first step towards recovery. Our goal at CCCHC is to provide assistance to individuals and families who experience emotional and coping problems and those who have serious and persistent mental illness. Services are available for children, adolescents and adults experiencing a wide range of problems. Call CCCHC today for more information or to schedule an appointment, 701-873-4445.

Well Child Checks

Are you on track? Coal Country Community Health Center is offering backpacks filled with fun! Children ages 3-6 years old must complete their Well Child Check in the month of September to receive a backpack. Call to schedule an appointment for your child at any of the CCCHC Clinic locations!

SMC Hospice Presents "LAUGHTER IS THE BEST MEDICINE" - September 28th

This event will be held at the Hazen City Hall. Mashed potato bar and all the fixings will be served during the social hour from 6:00 - 7:00 p.m. with the show starting at 7:15 p.m. Silent auction and raffle drawing will be held at the end of the evening. Tickets are \$30.00 in advance and \$35.00 at the door. Please contact the Hospice Office at 748-7380 for more information.

EMT (Emergency Medical Technician) Class

Mercer County Ambulance will be having an EMT (Emergency Medical Technician) informational meeting on Wednesday, September 18th, 7:00 p.m. at the Hazen Ambulance Bay. Final testing could be in May or July. If you have any questions or want to register, please call 880-2732, 748-7241 or 748-5558.



September is NATIONAL SUICIDE


Why Careo

1 in 5 adults will experience mental illness this year.
Show how you care about mental health.

Prevention Awareness Month

The Power Is in Our Hands

Suicide is the third leading cause of death among young people, and greater awareness of suicide prevention resources is key to helping individuals cope with suicidal thoughts before it's too late.

BE THE  TO...

ASK.

Don't be afraid to ask the tough question.
When somebody you know is in emotional pain, ask them directly:
"Are you thinking about killing yourself?"
Encourage them to be honest, and remind them that you'll be there for them no matter what the answer.

The Lifeline | suicidepreventionlifeline.org

SUICIDE WARNING SIGNS

TALK

Being a burden to others
Experiencing unbearable pain
Killing themselves
Having no reason to live
Feeling trapped

BEHAVIOR

Increased use of alcohol or drugs
Acting recklessly
Withdrawing from activities
Looking for a way to kill themselves, such as searching online for materials or means
Isolating from family and friends
Sleeping too much or too little
Visiting or calling people to say goodbye
Giving away prized possessions
Aggression

MOOD

Loss of interest
Irritability
Anxiety
Depression
Rage
Humiliation

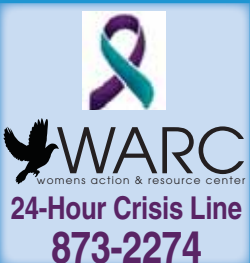
 AMERICAN FOUNDATION FOR Suicide Prevention



Crisis Resources

- If you or someone you know is in an emergency, call 911 immediately.
- If you are in crisis or are experiencing difficult or suicidal thoughts, call the National Suicide Hotline at 1-800-273-TALK (8255)
- If you're uncomfortable talking on the phone, you can also text NAMI to 741-741 to be connected to a free, trained crisis counselor on the Crisis Text Line.

www.suicidepreventionlifeline.org



We do it all ...

Screen Printing & Embroidery

Advertising Specialties

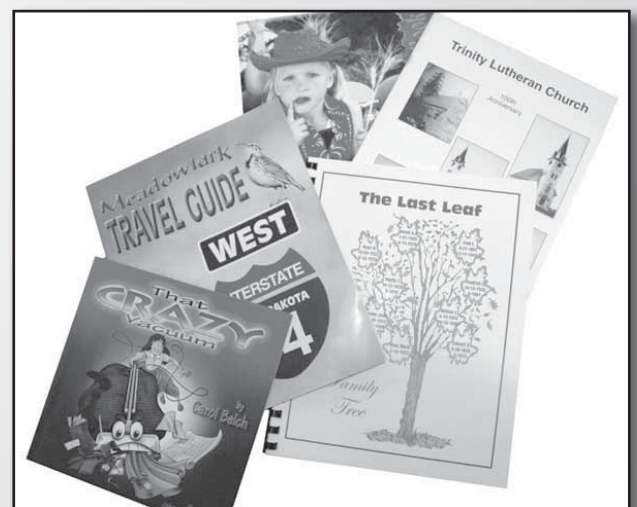
Printing & Publishing

Caps ♦ Shirts ♦ Jackets
Jerseys ♦ Uniforms ♦ Bags
Banners ♦ Signs & Vinyl Decals

Pens ♦ Mugs ♦ Keychains ♦ Lanyards
Shotglasses ♦ Playing Cards ♦ Magnets
Can Coolers ♦ Sports Bottles

Business Cards ♦ Letterheads
Envelopes ♦ Posters ♦ Labels
Invoices ♦ Annuals ♦ Directories
Newsletters ♦ Books

And Much More



Everything you need!



1-800-658-3485

- Beulah Beacon - 873-4381
- Center Republican - 462-8126
- Hazen Star - 748-2255
- McClusky Gazette - 363-2492
- McLean County Independent - 463-2201
- McLean County Journal - 448-2649
- Mountrail County Record - 627-4829
- New Town News - 627-4829
- Northern Sentry - 839-0946
- The Leader-News - 462-8126
- Underwood News - 462-8126
- Velva Area Voice - 338-2599



DON'T MISS THE 23RD ANNUAL

**Chamber
Fish Fry**

**Friday, September 20th
Black Sands Golf Course**

5-7 p.m.

**There will be fish, coleslaw and chips
available for the community prior
to the home football game
versus Hillsboro.**

**Free Will
Offering
Event**



Grace Evangelical hosts free concert and conference

By KATE JOHNSON

Free concert and marriage counseling conference offered at Grace Evangelical Free Church. The concert will be Sunday, Sept. 22 and the conference will be Saturday, Sept. 28.

Every fall the church hosts a concert and has different entertainment every year. This year they will be hosting Brent Vernon & Sam.

Brent is a singer, songwriter, author, illustrator and ventriloquist. During this concert, he will sing his own songs in his unique sound, as well as perform ventriloquy with his puppets.

Brent is from Florida and has been engulfed in music since his high school days. He has been a part of a band, Vision, who traveled the road from 1995 – 1998.

Brent later went on to a solo career that stretched from 1999 to today and recorded multiple albums, as well as traveled the country.

Grace Evangelical Free Church Pastor Jonathon Hallett said this is a combination of Brent's passions merging together. "Brent's desire is to spread a passion for Christ through music, stories and ventriloquism," said Hallett.

The concert will take place at Grace Evangelical Free Church on September 22 and begin at 7 p.m.

This event is free with the ability to give love offerings; however, it is not required.

The following weekend, Grace Evangelical Free will be hosting a marriage con-

AT A GLANCE

Brent Vernon & Sam
Concert and ventriloquist
Sept. 22 @ 7 p.m.

Marriage Conference
Sept. 28, 9 a.m. – 4p.m.
Food and Snacks provided

Grace Evangelical Free Church
2012 Central Ave. N.
Beulah, ND
701-873-5430

ference. This conference is something the church hosts every other year. Hallett said they believe that no marriage is perfect and that everyone needs help from time to time.

Charles and Nafeesha Johnson are Marriage on the Rock counselors who provide biblically researched based training for marriages and families. The Johnsons' are graduates of Southwestern Baptist Theological Seminary with degrees in Divinity and Christian Education.

Charles is a pastor and Nafeesha is a women's minister, both with, Meadowridge Baptist Church in Texas.

Hallett said anyone and everyone is welcome to attend this conference and do not need to be members of Grace Evangelical Free Church.

The marriage conference will be held Saturday, Sept. 28 from 9 a.m. – 4 p.m.

From 9 a.m. - 3p.m. the conference will take place in the sanctuary and from 3 – 4 p.m. will be for the participants to take part in a workshop.

Since this is an all day event, food and snacks will

be provided. This is a free event also; however love offering are accepted but not required.

Hallett said they offer this freely and openly to anyone because no marriage is an easy thing. "Marriage is difficult; there is no such thing as a perfect marriage. We all need help, so why not come get some," said Hallett. "It's biblically based, but the things being talked about in it can help people even if they're not Christians."

Fall clean up, no curbside pickup

By KATE JOHNSON

Beulah's Fall Clean Up starts this weekend. Clean up week only offers curbside pickup during the spring. During the fall city-wide clean up there is no curbside pickup.

Starting Friday, Sept. 13 will be Beulah's Citywide Rummage Sale. Rummage sales will begin Friday and be open through Sunday. Check the Beulah Beacon for the rummage sale map and who's on it.

While the rummage sales wind down, start your fall clean up and making trips to Beulah Transfer Station.

The Transfer Station will have different hours during clean up week: Saturday, Sept. 14 – Saturday Sept. 21. Extended hours will be on Sept. 21 from 9 a.m. – 12 p.m. and 1 – 4 p.m.

Regular hours during the week are: Monday – Friday, 8:30 a.m. – 12 p.m. and 1 – 5:30 p.m.; and Saturday, 9

a.m. – 12 p.m.; and closed Sunday.

Car, pickup and utility trailer dumping is free at the Transfer Station for Beulah residents only, normal charges apply to non-residents and truck dumping.

Residents can not dump, nor will the Transfer Station accept: oil, PCBs, antifreeze, paint, lead batteries, pesticides, asbestos of any kind, explosives, insecticides or household cleaners.

The Transfer Station will accept appliances: without freon, \$15; with freon, \$20; and microwaves, \$8 each.

Tires are accepted: car tires, \$7; per tire (on rim), \$9; truck tires, \$9; per tire (on rim), \$12; tractor tires, \$25 per tire.

The Transfer Station does not accept wire of any kind.

Enjoy a weekend of tossing out your own junk and purchasing someone else's.

Classifieds get results!
Call the Dollar Saver today at 873-4381 or 748-2255 to place yours.

Your Business is unique.
Your business cards should be too!

Upgrade now through BHG!

Go FROM THIS...



... To THIS!



beaconoffice@westriv.com • 701-873-4381 • 324 2nd Ave NE, Beulah

ENVIRONMENTAL DRIVEN SOLUTIONS LLC AUCTION

Saturday, September 21st, 2019 @ 9 AM MT

Selling at Auction: Oil Field Related Equipment, Trucks, Trailers, Tools

Location: Killdeer, ND - Driving Directions: 3 1/2 mi NW on Hwy 22, 1/2 mi W. on 1st St. NW

Proxy bids items start at 10 am

HEAVY EQUIPMENT

- 2012 Caterpillar 272D XHP Skidsteer, C.A.H., 2231 Hrs., 2 Spd. Trans., w. 78" Dirt Bucket & Rear Weights
- 2005 John Deere 210 CW 4x4 Mobile Excavator (Needs Hyd. Work)
- 2003 John Deere 270C LC Hydraulic Excavator, Runs Good, Needs track maintenance & needs new temp gauge
- 2002 John Deere 624H w. Forks & Bucket, 13,454 Hrs., May need Hyd. work
- Grove RT 58D 20 Ton Rough Terrain Crane Good Rubber @ 90%, Crab Steering VIN 4HFJ1643
- 1982 John Deere 772A Motor Grader, Engine is Sound, Controls are finicky, needs tires
- GP 46" Excavator Bucket, LAG 46" Excavator Bucket, JB Bucket for Pay loader 104" W x 52" H
- Felco Plate Compactor for Excavator 3'x6'
- 2002 Genie S-45 4x4 Man lift, Diesel Eng., 2313 hrs., (May need nylon fly-wheel)

PICKUPS

- 2013 Dodge Ram 1500 316,909 mi. Power windows, Auto trans., Crew cab, 5.7 Hemi gas, 4X4
- 2012 Ram 3500 SLT Model, Crew Cab, Cummins Turbo Diesel, Auto Trans., 4x4, Tuned & Deleted, 236,714 mi. 8' Bed
- 2012 Ram 3500 Crew Cab, Trades Man Edt., 6.7L Cummins Diesel Eng., Dually, 99,183 mi., Tuned & Deleted w. Roustabout Bed
- 2012 Ram 3500 Tradesmen Edt., Crew Cab, Auto Trans., 6.7L Cummins Diesel Eng., Dually, 109,546 mi. w. Roustabout Bed
- 2012 Ford F150 Cracked windshield, Power Windows, Auto trans., Crew Cab 4X4, Gas 5.0, 266,735 mi.
- 2011 Ram 3500 4x4 Crew Cab Pickup, Auto Trans., 6.7L Diesel Eng. Dually w. Roustabout Bed (Needs New Batteries, Turbo, Air Filter, Dip Stick & Radiator Cap)
- 2008 Ford F-350 XLT Crew Cab Dually w. Aluminum Rims, Auto Trans., 6.8 L Diesel Eng., 209,394 mi., (Hail damage on left side & hood) w. Welding Bed (Welder NOT Included)

PICKUPS

- 2008 Ford XL F350 Auto., Powerstroke Diesel 6.8 L Eng., 4x4, mi NA, (shows some rust) w. Slip Tank

PICKUPS

- 2008 Ford F350 4x4 Crew Cab Pickup, Auto Trans., Diesel Eng., 8' Box (For Parts)
- 2005 Ram 3500 Dually Crew Cab, 172,280 mi., 6 spd. Man. Trans., 5.9 Diesel Eng. Roustabout Bed
- 2003 GMC Sierra C2500/K2 Extended cab 4 door, Auto trans, 4X4, Power window/locks, Cracked windshield, 249,413 mi., 8.1 L gas motor
- 2001 Dodge Ram 1500 V8 Mag. Club Cab Pickup, 4x4, Auto Trans., (Needs eng. & trans)

TRUCKS

- 2007 International 9400i, Cummins Eng., 42" Sleeper, 697,000 mi
- 2007 Peterbilt 379, w. Cummins Eng. (Blown Head Gasket) 1,466,000 mi., 31, 195 Hrs.
- 2006 GMC C5500 Mechanic Truck, Duramax Diesel, Auto. Trans., 204,681 mi., Service Box equipped w. JD Air Compressor w. Honda GX390 Motor & Complete w. Lube System
- 2005 Freightliner 16M, Cat C7 Diesel Eng. w. Allison Auto. Trans. W. Pressure Washing Unit w. Honda Eng., Hotsy needs service & repair, 24' Box
- 2003 Chevy Dump Truck, no engine, 2wd, Dump bed with hydraulic sander, snow plow attachment, (can't verify mileage)
- 2001 Freightliner Fld, w. Cat Eng., 1, 396,000 mi., 4800 Hrs, 42" Sleeper
- 2000 Peterbilt 379 w. blown Detroit 60 eng., Conventional Truck w. 78" Sleeper, 1,571,000 mi.
- 2000 Peterbilt 379, w. Cat C12 eng., Blown head gasket, New rubber, Million + mi., Good running rig
- 2000 Peterbilt 378, Cummins Eng. Mod. 455 B, (Not Running)
- 1996 Ford AeroMax Detroit 50, Day cab, Needs new clutch, Not road ready.
- 1995 Freightliner Fld, w. Unilux Boiler Unit (Mod. 2F800W), 601,000 mi., 25' Box, No MBH available
- 1990 Mack CH613, L7-400 Engine, 400 HP, Day Cab, 1,489,000 mi.
- 1984 Peterbilt 362 Boiler Truck w. Cummins NH/NT 855 Eng. Cab over w. Sleeper, 795,214 KM, Dupree Boiler

VACTRUCKS

- 2009 Volvo D13 VHD Hydrovac, 86,607 mi., Deckett Water Heater VIN# 4V5KC9EJ19N275463
- 2005 International 7600 (Motor is blown) Good Rubber, w. Vactor Hydrovac VIN# 1HTWYSBT15J186500

TRAILERS

- 2012 Monster - 130 Barrel
- 2012 32' PJ Flatbed Trailer, Reinforced over the Wheel-Wells, Dove Tail w. Ramps, Est. 13,000 lbs. Axels, Badlands Trailer
- Wells Cargo 40' Trailer, Tandem Axle, Cargo Door & Side Entrance, Wired, Little Use
- Galyene 130 bbl. Tanker, Good cond.
- 2011 Magnum-generator trailer Bumper Hitch 2010 Mag Bumper Hitch Trailer VIN# 5AJGS1611AB0017892009
- Dragon Trailer 130 bbl., Challenger Pump, Good Rubber
- 2008 Troxel - on the fence line 120 bbl., Tanker w. Challenger Pump
- Troxell-Hooked to Red Ford Semi Dragon 130 bbl w. Challenger Pump Wells Cargo Trailer
- 2007 Dragon
- 2007 Magnum-generator trailer Bumper Hitch Trailer
- Dragon - 130 bbl.
- CMAC Charmack Job Trailer, 8'x24' w. Drop Door, Wired for Lighting
- 2005 Travelaire Enclosed Trailer/Rescue Trailer
- Troxel 120 bbl. Trailer, No Pump, Missing Landing Gear
- Jerry James Trailer 80' x 16' w. Pull Out Ramps, Dbl. Axel
- 2001 Cusco 140 bbl. Dump Trailer - Good Unit
- 1993 Dorsey Trailers Dry Van with boiler parts, 48'
- 1993 Presvac Black Dumping Vac Trailer
- 1991 Stoughton 48' Dry Van
- 1988 Site Van Trailer
- 1981 LowBoy Hydrodrop 60 Ton
- 1974 Heil Trailer
- 1966 Trailmobile 8250 gal. Trailer (Not for salt water)
- 56" x 10' Trailer Frame, Dbl. Axel, Heavy Duty, Pintle Hitch
- 56" x 12' Magnum Trailer Frame, Dbl. Axel, Heavy Duty w. Brakes, Good Rubber, Spoked Rims, Pintle Hitch
- Playcraft 82" x 16' Flatbed Trailer, Dbl. Axel, Brakes, No Ramps, Some Fender Damagae, Good Floor (No Title)

BUILDINGS

- 10' x 20' Conex Metal Building, Heavy Duty, Portable
- (2) 20 Unit, 4 - Piece Man Camp Trailers, Jack & Jill Bathrooms
- 20'x36' Stick Built Building, 3 Doors, Partially Insulated, Wired, Steel Roof, OSB Siding, (Lots of Potential)

CALL JOHN @ (406) 465-1798 FOR INFORMATION ON EQUIPMENT

For additional information on this auction and upcoming auctions go to www.wolffauctioneers.com

Wolff Auctioneers

SHANE WOLFF LIC. NO. 2 701-933-4573 701-870-9090 (CELL)

HEAD CLERK: PAULA JOHANNER LIC. NO. 664 701-870-1408 (CELL)

Visit our web site: www.wolffauctioneers.com

GET TO THE GAME ON TIME WITH AUTOMOTIVE SERVICE BY



Cool Down During Football Season

**\$10 OFF ANY SCHEDULED
AC SERVICE.**



COUPON CODE: 7DSAC19
EXPIRES: SEPTEMBER 30, 2019
NO DUPLICATIONS OF COUPON |
COUPON MUST BE SURRENDERED

LAST CHANCE TIRES

- 1- P215/65R15 HANKOOK H725 FOR \$70.00
- 2- P225/60R16 LAUFENN SNOWTIRES FOR \$70.00 EACH
- 2- P215/60R14 GRAND AM FOR \$40.00 EACH
- 2- P235/75R15 XL HANKOOK H-724 FOR \$70.00 EACH
- 2- LT 235/85R16 HANKOOK RF10 10PR FOR \$140.00 EACH
- 2- 8.25R15 HANKOOK TH06 LOW BOY FOR \$235.00 EACH
- 1- 225/70R19.5 YOKOHAMA TY 303 FOR \$100.00

BRAKE DISCOUNT

**10% OFF ON ANY BOOKED
SERVICE LABOR CHARGE.**



COUPON CODE: 7DSLBR19
EXPIRES: SEPTEMBER 30, 2019
NO DUPLICATIONS OF COUPON |
COUPON MUST BE SURRENDERED

LET'S TALK WINTER TIRES

CHECK YOUR WEAR AND TEAR WITH
FITTERER OIL AUTOMOTIVE'S
KNOWLEDGEABLE STAFF.



Engine Check

GRINDING? CRYING?
CAR GIVING YOU SIGNALS IT NEEDS
ATTENTION?

FITTERER OIL AUTO CAN FIX THAT.



709 3rd Ave NW Hazen | (701) 748-3835
fittereroil.com | @FittererOilAuto



Knife River Ducks Unlimited Firearm Extrava-gunza!

Saturday, Sept. 28th

Fanatic's Bar & Grill - Beulah, ND • 6 p.m.

Free to Attend!

- Raffles for Guns & More
- Food available from Fanatics
- Special raffle for DU members
- Raffles all night

For more info call Herb at 701-870-2217

Banquet promotion sponsored by Knife River Ducks Unlimited and Ducks Unlimited supporters:



FIRST SECURITY BANK-WEST



Sharpen Up for Sharptail Season

BY NICK SIMONSON

With the approaching opener on Sept. 14 for sharp-tailed grouse and generally good numbers from this spring's lek counts and anticipated improvement in the birds' populations this summer in many areas, getting on North Dakota's early prairie upland season will be a prerogative for many hunters in the approaching weeks. Coming with the opener are thoughts of warm (but not too hot) days walking with a late September sun shining on a switchbacking field dog, the crackle of drying autumn grasses underfoot and the gurgling laughter of a flushing covey of grouse blurring across the blue-and-gold autumn horizon. It isn't hard to make the most of these afternoons spent wandering the prairie expanses in search of sharpies, but a few helpful tips will make each one more successful.

OPEN UP

Sharptailed grouse are birds of the open plains, and in times of good conditions are often found in areas where they not only have good line of sight to approaching danger, but also the ability to escape to similar places a distance off. For this reason, targeting grassy stretches of conservation reserve program grasses that are large and expansive provides a good starting point for sharpie hunters. Add in a series of hills or rises and falls in the terrain, so that the birds can use the angle to see and feel secure, and a grassy stretch becomes a greater prospect in searching for sharpies. In areas with some farming mixed in with the habitat, explore the edge of CRP or grassland that abuts alfalfa and small grain fields, as this is where young grouse, which make up a good portion of the coveys, will get much of their nutrients including protein from the last of the year's grasshopper crop and moisture from the leaves of such plants. In challenging weather or just after it, look for sharp-tailed grouse to take shelter in tree and brush plantings, or those that naturally occur on the landscape, with lower and denser options like pines, cedars and dogwoods being a better draw. Draws with dense buckbrush at their upper ends, or clumps of buffaloberry bushes on hillsides will provide targets on the prairie to walk to and around in search of sharpies. As conditions improve, and the sun comes out to dry things off, expect to find birds moving out of these areas of cover but to still be somewhat nearby.

SCOUT IT OUT

Sharptailed grouse are like perch, and not just because

they often play second fiddle to pheasants in the mind of hunters the way the panfish do for hardcore walleye anglers. Rather like perch, if one grouse is encountered, there are often more around in the area. Many times, a solitary grouse can be seen sitting on a haybale, the top of a bush or other elevated position. These sentinels serve as the scouts for the larger group of birds, which are often nearby, or scattered throughout a given area. Even if these observers flush early, make it a point to keep moving in their direction, especially in the early portion of the season, as other birds may hold tighter and a few often remain, providing for surprising opportunities, when it seems like most of the grouse had taken flight ahead of a dog and hunter arriving on the scene.

In known grouse territories, watch for dogs to get on scent, and that cue can be very strong as the birds often hunker down in large groups in late summer and early fall, keeping a continuous concentrated source of scent. Watch for wind-checking by a bird dog and stay on its tail as it picks up and gets going on a solid trail. Be ready as birds may flush ahead, to the side and behind an area of thick scent and be sure to mark the position of downed birds in the middle of the chaos that often comes with eight, ten or a dozen sharpies flushing, and remember – pick one bird and shoot, then move on to the next one – resist the natural urge to just let pellets fly when a group gets up in unison. Target those on either side of a flushing group, and then move to the next bird for best success.

KEEP MOVING

Like their woodland cousins, the ruffed grouse, sharpies require some walking to find the best pockets of hunting. Being a species that enjoys wide open grasslands, sharptailed grouse make hunters meet them on their turf and on their terms. Be prepared with a good pair of boots to put the miles on through the autumn grasses and some sturdy field pants to explore those hills, draws, brushlines and edges where grouse are likely to hold, with some sharp cover a hallmark of these hunts. Watch for both far- and near-flushing grouse and monitor their movement on the horizon for a likely landing spot. Head in that direction and sometimes a second opportunity will present itself. With the approaching opener just days away and a better population available for hunters to pursue this autumn, knowing the habitat, habits and how to get after sharptailed grouse will make for a memorable time afield and put these birds at the forefront of some great hunting experiences.



Our Outdoors: Don't Overlook WPAs This Fall

BY NICK SIMONSON

From the rush of a buck moving under my perch in the low crook of a large tree along a vast slough, to a covey of sharptailed grouse rising on a grassy hillside, to the excitement of a flushing pheasant breaking its way out of the cane on a mid-December hunt, the countless opportunities experienced on the region's smallest public lands have made for some of my biggest memories in the field. The outdoor opportunities to be experienced in the area's network of Waterfowl Production Areas (WPAs) extend far beyond the chances at ducks and geese for the dedicated waterfowlers chomping at the bit for their openers in the coming weeks. While Wildlife Management Areas (WMAs) and the assorted private lands open to hunters throughout the upper Midwest are the first destinations that come to mind for many sportsmen, WPAs are parcels which should not be overlooked. While predominantly associated with duck and goose hunting and the requirement of non-toxic shot, WPAs provide other opportunities, including great chances at upland game and deer as well and these squares on the map often signify good habitat to be explored throughout autumn.

Typically consisting of smaller pocket sloughs preserved by outright fee ownership by the federal government, or through leases and easements, WPAs are mostly located throughout Montana, North Dakota, South Dakota and Minnesota and are a part of the U.S. Fish

& Wildlife Service's (FWS) National Wildlife Refuge Program and have been funded by dollars raised through the annual sales of Duck Stamps. Initially designed to protect the valued pocket waters of the nation's Prairie Pothole Region which were formed during the recession of glaciers at the end of the last ice age and since then have served as the historical breeding grounds for dozens of duck species, WPAs along with sister lands in the National Wildlife Refuge program account for just under two percent of the acreage in this area of the country. However, these small spaces have a major impact on breeding waterfowl populations, responsible for almost a quarter of the ducks and geese found in the upper Midwest, according to the FWS.

This fact is not a secret to dedicated waterfowl hunters who turn to these areas as autumn sets in to catch birds in migration and find success on the shorelines of these pocket sloughs and the surrounding habitat and fields. Already required to use non-toxic loads in their shotguns for waterfowl, the primary regulation associated with WPAs has little impact on their hunting activity, but often deters sportsmen of other stripes from taking advantage of these opportunities, which due to a few added rules, reduces pressure from upland hunters and big game hunters. But for those in the know and willing to switch over to steel shot, they will find plenty of action on WPAs. Best of all, for deer hunters, lead bullets used for hunting with rifles or

muzzleloaders are generally not subject to the non-toxic regulations in place. Beyond the restrictions on shotgun shell type, with a few other rules which are usually posted at prominent entry points or online, most WPAs are governed by the hunting laws of each state during the applicable seasons.

Often found hemmed in by agricultural lands, WPAs provide a sanctuary of sorts for deer, with thick cover in the form of cattails and related wetland vegetation providing the height and density to conceal their movements and many trails leading to and from surrounding farms and open areas lead back to these places where the animals bed. In the late season when these areas ice over, WPAs make for great pheasant hunting with the same deep stretches of cattails providing thermal cover for pheasants and many memorable hunts can be had when the fall's remaining roosters in an area have congregated in these small spaces. This season, grab a box of non-toxic shot and make WPAs part of some new hunting adventures and don't overlook opportunities for big game on these lands as well. Check out the applicable regulations for these parcels at and on related state agency websites and learn more about the ones located nearby for some great public access hunting. While they may be small, scattered and slightly more restrictive in their rules, these factors are what typically reduce pressure on them and make WPAs some of the best hunting opportunities...in our outdoors.



Underwood took home the Team Championship award. Front: Marilyn Ash, Arlene Arndt, Graydon Nash. Back: Steve Cottingham, Josh Redemacher.

Underwood team wins BHG Masters

By TYSON SMEDSTAD

This year's BHG Masters Tournament was hosted by the Garrison Golf Course.

The Master teams were comprised of the top players from eight golf courses around the area. Besides Garrison Golf Course other courses include Black Sands in Beulah, Edgewood Country Club in New Town, Hazen Golf Course, Painted Woods in Washburn, Doc Blatherwick Golf Course in Parshall, Square Butte Creek in Center and Westridge Golf Course in Underwood.

The teams consist of three men and two women and the final score is the top four rounds out of the five players.

The winning team this year was from Underwood with Graydon Ash, Marilyn Ash, Steve Cottingham, Josh Rademacher and Arlene Arndt. Their overall score was a 333.

"This was one of the closest tournaments, we've had

in a long time," Tournament Coordinator Mike Gackle said.

The second place team from Garrison was right on their heels with a 336. Garrison's team was Levi Tomlinson, Vance Tomlinson, Rich Griffith, Amanda Forsberg and Tami Engel.

Besides the overall score, there were a few individual winners as well: Cheryl Bruce for Longest Putt, Joann Brunzell for Closest to the Pin, Caitlin Wilcox for Closest Second Shot, Francis Brunzell for Longest Putt, Doug Rensch for Closest to the Pin and Rich Griffith for Closest Second Shot.

The Beulah and Hazen golf courses were unable to field teams this year for the tournament due to another engagement.

Also, the New Town golf course only had two players. Therefore they were not able to compete in the team championship.

With the win comes bragging rights for the year.

Dollar Saver classifieds ...
... We've got what you need!
873-4381
748-2255

12th Annual Lutefisk & Lefsa Supper
Meatballs and all the trimmings, will also be served.
\$15 with proceeds going to Sakakawea Hospice
Saturday, Sept. 21, 5 p.m. CDT at the Dam Bar in Pick City

It isn't at all what you think it is

I had three sisters, all who married and had children. My eldest sister presented me with my only nephew from those unions and he was her first-born. Sadly, he died in a car crash around age 40. My regret remains that I failed to provide a better example for him when I was around him in his growing up. He'd lived a troubled life but his life was no failure. It was, probably like so many lives, a journey in need of a correction.

My youngest son went to the cemetery with me one year and I told him that my nephew was a good boy. But, are we not all good boys, at least at some time in our lives, prior to following life's twists and turns.

I did learn a valuable lesson from my father's actions and my failings with my nephew. Simply said, "be careful what you raise." And, that's enough said about that.

Recently, I have given some of my personal belongings to close and treasured friends. This has caused some speculation as to whether I was dying or becoming suicidal. The answer, to the best of today's answer, is neither. There were some things I wanted to do and having left a lot of business unattended when I died a few years ago, I thought it best to get ahead of things. So, I gave some things away. I'll likely do more, for no other reason than it just feels like what I need to do to feel better. And, I like feeling better. And, I want some people to know I really appreciate and care about them. There are a few who will need to wait longer than others.

Talking about my nephew and giving things to people brings to mind the funeral service for my nephew. It was conducted by a Native relative of our family, and my nephew rests alongside my parents, his grandpa and grandma, in an old cemetery south of White Shield on the Fort Berthold reservation, not far from where we called home many years ago before Lake Sakakawea.

There is a Native tradition of a "give away," where a deceased person's things and things donated by family and friends are given to various people and organizations. Pendelton blankets are popular, I guess since they are part of things dating back many, many years.

This minister talked about how we should remember to be generous in life and give Pendeltons in life, rather than waiting for your funeral. I know I won't be able to see any happiness on folk's faces from this life when I am dead. I'll be looking back. So, I give things away and this way a good word can accompany the stuff. Trust me, I'm no crazier today than I was yesterday or the day before. More aware, maybe. A bit more in tune.

On a lighter note, there are certain benefits from early



TRACKS IN THE SAND

KEN BEAUCHAMP

giving. When my first wife and I divorced, I gave her half of my sense of humor. I was going to wait until I died and give her all of it, but I felt she'd need it sooner than that. Yes, that is likely one reason why she hasn't purchased a terrorist drone strike on the House of Misery and it's miserable occupant.

A mutual party was telling me that this lady was pretty mad at me recently. "You might start wanting to speed up giving away your stuff. Don't know, just saying." I have the remainder of my sense of humor marked with a tag, designating it to go to her. The pretty grandma who can't stop laughing over my grave, that would be her. The four flat tires on her car, that would be me. You just leave 20 bucks with a note in a coffee can at a select location and all things are possible.

I had this dream where I did die and arrived at the gates of Heaven, where I was pulled over from the main traffic lane. St. Peter walked over and said, "Well, nice to see you again. Is this another visit or are you here to stay?"

"No one wants me but you,"

I said. To which he replied, "It isn't all that easy. You see, there are some rules and according to my latest message there is a special one for you. You will be allowed in but only upon the condition you bring your first wife with you. Otherwise," he said, pointing down, "I'm afraid you'll be rooming with, well, you know who."

"But," I tried to reason. "She isn't here."

"Oh, she'll be along," he said. "Since you died and left her the balance of your sense of humor, she can't stop laughing and should laugh herself to death shortly. I think it was all the young women dressed in black weeping in the front row that set her off. There was some story about some money left in a coffee can with a note requesting wailers."

Then he fondled the lever for the "down" elevator and sighed, "Well, we need to make up our mind, don't we."

Luckily, I woke up in mid flight of mid dream. I thought about hurriedly giving most everything away. Then, I decided why not sell everything and go to the casino and donate there.

Just my luck, I'd win.

AUCTION

Sept. 14 - 10:30 a.m.: Randy Sawicki Estate and Nancy Sawicki, 39500 McLean County 29, Wilton, tractor, gravity grain bin, equip. and shop, guns, antique and household. Northern Auction, Kevin Beeter, midwestauctions.com/northern

Sept. 21 - 9 AM MT Environmental Driven Solutions L.L.C. Liquidation Auction. Offering: Oil Field Related Equipment, Trucks, Trailers, Tools Location: Killdeer, ND Wolff Auctioneers.

Sunday, September 22nd, 2019 @ 12:30 PM CT, Owner: Veryl Morast Estate Offering: Vintage ATV's, Snowmobiles, Vehides, Shop Items, Guns & Furniture Location: 7 mi. N. of Zap, ND on Cty. Rd. 13 or from Hwy 1806, 1/2 mi. S. on Cty. 13. Wolff Auctioneers.

Sept 22 - Richardson, Dohrmann, Hebron Real Estate & Guests - 12:00 pm CT - Hebron, ND Real Est, Tractor, Vehicles, Trailers, ATV, Carpenter Related, Shop, Household, Yd/Garden, Ant/Collect, Misc - G & G AUCTIONEERS 701-878-4001 www.midwestauctions.com/gandg

Sept. 24th, 2019 Dunn County Land Auction. Offering 516 Acres and Farmstead. Legal Description: S 1/2, & NW 1/4 of the NW 1/4 & S 1/2 of the NW 1/4 & S 1/2 of the NE 1/4 of Sec. 26-143-91. Property Located: (From Dodge, ND) 7 mi. S on 81st Av. SW, 1 mi. E on 15th St. SW & 1 mi. S on 80th Av. SW. Seller: Larry Zarr. Wolff Auctioneers.

Sept 28 - Stark Co Surplus & Guests - Dickinson Fairgrounds - Vehides/Campers, Snow Plows, Livestock Related, ATVs, Guns/Swords, Furniture - G & G AUCTIONEERS 701-878-4001 www.midwestauctions.com/gandg

Tuesday, October 2nd, 2019 @ 6 PM CT, NW Oliver County Land Auction. Owner: Kelly Neuberger. Offering: 215.1 Acres +/- in NW Oliver County. Legal Description: Parcel of the S2 - Sec. 8-143-87. Location: Auction will be conducted at the Cobblestone Inn, Beulah, ND 58523. Wolff Auctioneers.

October 5 9:00 AM CT - Hardware Hand Liquidation - New Salem, ND. G&G Auctioneers. Oct. 5 - 10:04 a.m. Real estate auction, Thomsen's 4 Winds Auction, 701-220-8575, 4windsauction.com.

Oct 6 - Jeff Schumacher Est & Guests - Glen Ullin, ND - 12:00 pm CT - Glen Ullin, ND - Real Est, Vehides, Motorcycle, Household, Yd/Garden, Ant/Collect - G & G AUCTIONEERS 701-878-4001 www.midwestauctions.com/gandg

October 12 10:00 AM MT - SAETZ FARM & RANCH EQUIPMENT AUCTION. Owner: Frank Saetz Estate & Bonnie Saetz. Partial Listing Coming Soon. Wolff Auctioneers.

Oct 12 - Lyle Donner Est & Guests - 10:00 am MT - Reeder - Tractors, Equip, Shop, Vehides, ATV/Snowmobiles, Yd/Garden Ant/Collect, Household. - G & G AUCTIONEERS 701-878-4001 www.midwestauctions.com/gandg

October 26 10:00 AM CT - 250+ Gun Auction - New Salem, ND. G&G Auctioneers.

NOVEMBER 1, Mercer County Land Auction, 320 Acres - the S2 - sec. 19-145-84, Seller: Henry Miller Land, 5 miles NW of Stanton, ND, More information coming soon. Wolff Auctioneers.

Saturday, November 2nd, 2019 @ 10 AM MT, Killdeer Gun Auction. Offering: 161 Guns. Location: Bucksin Bar & Grill, 64 Central Ave S, Killdeer, ND 58640. Wolff Auctioneers.

Classifieds get results!
Call the Dollar Saver today at
873-4381 or 748-2255 to place yours.

Send your advertisement into over 7,000 homes and businesses throughout South of Lake Sakakawea Region covered by the

Dollar Saver

\$9.00

Per column inch Classified Display

\$8.00

For the first twenty words Classified Word Ad 25¢ for each additional word, additional weeks or papers 1/2 price of original ad

DOLLAR SAVER CLASSIFIEDS

Get The Job Done!

Place your ads by 5 p.m. Wednesday by calling our offices, or send an email to beaconoffice@bhgnews.com • 873-4381 or staroffice@bhgnews.com • 748-2255

Buy • Sell • Farm • Rent • Hire

ANNOUNCEMENTS

TURTLE LAKE WEIGH STATION will be shipping cows and bulls Sept. 23. Have them there by 11 a.m. Call Darin, 701-315-0144. 49-tfn-pd

DAKOTA TERRITORY GUN COLLECTOR'S ASSOCIATION GUN SHOW will be held Saturday, Sept. 28, 9 a.m. to 5 p.m., and Sunday, Sept. 29, 9 a.m. to 3 p.m., BISMARCK EVENT CENTER. Laura Ennen, 701-221-2638. 28-2t-ch

BUSINESS SERVICES

I HAULAWAY broken vehicles & scrap metals, for FREE! Cash for some. 833-2884. U call, I haul. 29-tfn-nc

GIVE AWAY

FREE FOR THE TAKING! Old newspapers - great for packing and moving. Pickup at the Beulah Beacon. 24-tfn-nc

MISCELLANEOUS

WE DO JEWELRY REPAIR. Resizing, retipping, stone replacement and much, much more. Quality work at modest prices. Jensen Jewelry, Hazen, 748-2217 50d-tfnc

WANTED: Used oil drop off at A1 Auto in Beulah or call for pick up 873-2330. 25-4t-ch

WHITE PAPER TABLE COVER AND PLASTIC TABLE COVER: For weddings, anniversaries, and social events. Paper table covers, 40"x300" rolls and plastic table covers 40"x150". Plastic table covers available in many colors not in stock, but can be ordered. Available at Hazen Star, 748-2255 and Beulah Beacon, 873-4381. 49-tfn-nc

HELP WANTED

SOUTH SEGMENT COMMUNITY Corporation has available entry level positions as cashiers in our stores, starting at \$12/hour, including benefits after 30 days. If interested please contact Raimy Langlois at 701-938-3590. 26-31

REAL ESTATE FOR RENT

Zap Apartments - Quiet, one bedroom. Affordable rates with electricity, water and trash included. Furnished or unfurnished. **Free Wi-Fi.** Off street parking. Laundry facilities on site. Please visit www.zapapts.com or call (701) 948-2292. 33-tfn-ch

OFFICE SPACE FOR RENT IN HAZEN: Grunett Rentals, 870-6214. 41d-tfnc

FOR RENT 3 bedroom Deluxe side by side Duplex in Hazen. All new upgrades, only \$625. Call 701-220-4783. 25d-tfnc

SELF STORAGE UNITS FOR RENT IN HAZEN: 12x30 and 12x20 units available. 891-1447. 29d-tfnc

VEHICLES FOR SALE

FOR SALE: 2012 Chevy Impala LT 4 dr silver 107,000 miles. Very good condition. Would be a perfect work car or high school car. Call 873-5988 or 870 4801. 18-tfn-nc

WORK WANTED

THIS NEWSPAPER offers free job wanted ads to anyone seeking employment at a local or area business. Please list your job skills or the type of work you are seeking. A free ad of up to 25 words may be printed up to a month in this newspaper. Mail your ad to Beulah Beacon, 324 2nd Ave. NE, Beulah, ND 58523 or Hazen Star, Box 508, Hazen, ND 58545. Or email it to Beaconoffice@bhgnews.com or Hazensales@bhgnews.com. 19-tfn-nc

WANTED

WANTED OLD STUFF: Advertising signs, oil cans, gas pumps, advertising clock's and thermometers, crocks, animal traps, anvils, ND pottery, arrow heads, carnival glass, ND tokens, salt & pepper shakers, indian head mine sign. Call 701-220-5746. 16-tfn-ch

REAL ESTATE FOR RENT

STORAGE UNITS FOR RENT:

In Hazen
Unit size, 12x30
10 ft. wide doors
701-870-1433
or
701-880-9114

HELP WANTED

HELP WANTED:

Part-time truck delivery driver, approximately 10 hours per week in Hazen-Beulah area. Hintz Distributing, 870-0954.



HELP WANTED



SECURITY OFFICERS

GENERAL SECURITY SERVICES CORPORATION™

Beulah, ND

Qualified applicants must be professional, punctual, engaged persons with an excellent work ethic. Employment contingent on passing a criminal background check. Please call (218-726-1606) or email Bill (Bill@GSSC.net) for more information. EOE/AA/Disability/Veterans/M/F Employer Immediate full-time & part-time openings!

JOB ALERT!

Are you in the Beulah, ND area and in need of a full time job with benefits and 401k? The Beulah branch is looking for an enthusiastic, hardworking person to be a front window teller! Job duties include waiting on customers, opening and closing accounts, and basic office work. This position offers health insurance, dental and vision insurance, 401k package, and Paid Time Off. Applicants should have the ability to work with the public, computer skills that can adapt to banking needs, as well as solid written and oral communication skills. Candidates must meet certain standards as a part of a financial and criminal background check.

Please call Brady Torgerson at 701-873-4301 or inquire within First Security Bank- West in Beulah, ND. EO/AA/DISABILITY/VETERAN EMPLOYER



FIRST SECURITY BANK-WEST

100 Main St. E, Beulah • 873-4301 • firstsecuritybankwest.com



Classifieds get results!

Call the Dollar Saver today at 873-4381 or 748-2255 to place yours.

REAL ESTATE FOR SALE



FOR SALE-(REALTORS WELCOME)
\$329,900 (Reduced Price)

5 Bedroom, 4 Bathroom, office, living room and family room, family and formal dining room, 2 fireplaces, spacious (4400 sq. ft) home.

Energy Efficient home with double 2X4 walls, high efficiency heating and cooling!

Fresh exterior painting

2 stall garage with extra room for work bench. Sprinkler system in yard

Located on 2 large lots in a cul-de-sac.

Close to Beulah Middle School, pool and Fitness Center

CONTACT 701-870-0724

Are you liking independence and confidence?

Beulah Dairy Queen is hiring

We offer business training to provide both confidence and independence that comes with a great job.

Great starting pay!

Full and part time positions flexible hours

We're diverse. If you'd like to join a winning team, pick up an application at the Dairy Queen.



Dairy Queen

1300 Hwy. 49 N., Beulah • 873-2555

Hours: 10:30 a.m. - 10 p.m. Everyday

Visit our Web site: www.bhgnews.com

Seeking Dedicated, Compassionate Healthcare Professionals



Join our team of healthcare professionals dedicated to bringing health, healing and a better quality of life to our patients and neighbors. Opportunities include:

- RN in Hospital – FT* and PT
- * Full time RN hires receive a \$5,000 sign-on bonus plus up to \$15,000 in education loan repayment!
- RN/LPN in Hospice – PT (24-32 hrs/week)
- Respiratory Therapy Manager – FT
- Respiratory Therapist – FT
- Medical Technologist/Medical Lab Technician – FT
- Surgical Technologist/ER Technician – FT
- Accountant – FT
- Volunteer & Bereavement Coordinator – PT (28-32 hrs/week)
- Nurse Aide/Med Aide in Senior Suites - FT & PT
- Patient Services Assoc. in Business Office – FT
- Patient Services Assoc. in Nursing Service – PT (16-20 hrs/week)
- CNA in Hospice – PRN/Casual Status
- Dietary Aide – FT
- Environmental Services/Housekeeping Assoc. – FT

Offering competitive wages and a generous benefits package. Sign-on bonuses for qualifying positions. For more information visit www.smcmd.org.



510 8th Ave. NE | Hazen | (701) 748-2225 | www.smcmd.org

Sakakawea Medical Center complies with applicable Federal civil rights laws and does not discriminate on the basis of race, color, national origin, age, disability, or sex.

Send your advertisement into over 7,000 homes and businesses throughout South of Lake Sakakawea Region covered by the

Dollar Saver

\$9.00

Per column inch Classified Display

\$8.00

For the first twenty words Classified Word Ad

25¢ for each additional word, additional weeks or papers 1/2 price of original ad

DOLLAR SAVER CLASSIFIEDS

Get The Job Done!

Place your ads by 5 p.m. Wednesday by calling our offices, or send an email to beaconoffice@bhgnews.com • 873-4381 or staroffice@bhgnews.com • 748-2255

Buy • Sell • Farm • Rent • Hire

HELP WANTED



At Basin Electric, our employees are the heart of our organization. Together with our subsidiary Dakota Gasification Company, we employ more than 1,800 people across multiple Midwestern states. In addition to competitive salaries, we offer an incredible benefits package.

Please check our website for the closing dates of these job openings.

Basin Electric Power Cooperative

- Real Time Trader I - Bismarck, ND
- Director of Tax - Bismarck, ND

For job details, go to jobs.basinelectric.com

Questions? Call 701-557-5603

Equal Employment Opportunity Employer of Minorities, Females, Protected Veterans, and Individuals with Disabilities.



PART-TIME - OFFICE ASSISTANT/TITLE CLERK

Job responsibilities:

- Performing day-to-day operations of the Motor Vehicle branch of the Chamber Office. Including: Vehicle license renewals, vehicle title work, administrative duties, reconciling transactions and customer service.
- Assist with the Chamber and Beulah Convention and Visitors Bureau duties. Including: Answering phones and support for the Chamber and CVB activities and events.

Minimum qualifications:

- Previous work experience performing a variety of administrative support or customer service duties, computer skills.
- Strong personal computer competency including business office applications.
- Experience with MS Office Suite to include Word, Excel, Access, Publisher and Outlook.
- Ability to clearly communicate instructions, directions and information in person and by telephone.
- Good skills working with the public and interacting with people of all ages and backgrounds.
- Math knowledge to accurately perform routine daily functions to include balancing and recording daily receipts.
- Must have good attention to detail and ability to lift up to 30 pounds.
- High School Diploma or GED.

To Apply: Send a Cover Letter and Resume to PO Box 730 Beulah, ND or Email Rachael at mortenson@visitbeulah.com
Closing Date: September 16th.

HELP WANTED



Career Opportunities at
KNIFE RIVER Care Center
Excellence through Compassion
Make a Difference in Someone's Life
Become a Caregiver at Knife River Care Center

Knife River Care Center has the following caregiver positions open for resident-focused individuals who have a genuine interest in providing care and services in a long-term care setting:

Registered Nurses/Licensed Practical Nurses

If you are a nurse seeking a rewarding career, this is the job for you! Full-time and part-time positions available. Talk to us today about our student loan repayment program!

Certified Nursing Assistant

Full-time and part-time positions
Knife River Care Center will be offering Certified Nurse Assistant training soon. CNA training is a 75-hour North Dakota Health Department approved program provided to individuals hired as a Certified Nurse Assistant. KRCC will pay your salary while you train! Already certified-join our team of caregivers today!

Dietary Cook

Full time The Dietary Cook is responsible for the preparation of food for residents, guests and employees.

Dietary Aide

Part-time, day shift or evening shift. The Dietary Aide assists the cook in the set up and service of meals and washing dishes. The evening shift is perfect for high school students!

Knife River Care Center also offers competitive wages and an excellent benefit package that includes health, dental, vision and life insurance; PTO; sick leave; and 401(k) retirement plan with employer match.

For further information, please call Human Resources at (701) 873-4322 or visit our website at: www.krcc-nd.org

Please submit resume to:

Human Resources
Knife River Care Center
118 22nd St NE
Beulah, ND 58523

Knife River Care Center is an Equal Opportunity Employer

FARM RELATED

Custom Fencing

Build, repair, and removal of barbwire and chain link fence. Now offering panels, feed bunks, ATV crossings, lifetime barbwire fence corners, and more.

Call Levi for an estimate.

701-204-3727

CUSTOM FENCING

Build new, tear out and repair, pasture fencing, coral, wind break & ect.

Call Jared at

701-843-8010
605-490-9475

Custom Vinyl Decals for your Anhydrous Ammonia Tanks & Farm Equipment



Average size: 22" x 12"
Call for a quote

BEULAH BEACON
324 2nd Ave. NE, Beulah • 873-4381

One Great Place to Work.

As the area's premier primary and preventative healthcare provider, we offer a wide range of exciting job opportunities for medical and non-medical professionals alike. Apply today, and discover why we are a great place to work, learn and grow your career.

Join Our Team!

- Housekeeping, Part Time – Beulah Clinic
- Billing Specialist, Part Time – Business Office, Beulah
- Clinic Nurse (RN), Full Time – Beulah Clinic
- Clinic Assistant, Full Time - Killdeer Clinic
- Clinic Nurse (RN, LPN or Medical Assistant), Full Time - Killdeer Clinic
- Clinical Lab Technologist (CLT) (MLT), Full Time - Killdeer Clinic
- Clinical Lab Scientist (CLS) (MT), Full Time - Killdeer Clinic
- Family Medicine Physician, Full Time - Hazen Clinic. Join a team approach to providing robust preventative, behavioral health integration, chronic disease management and patient education programs while delivering quality primary care to patients of all ages. Limited Call Schedule! Benefits include: Paid Time Off, Extended Sick Time, Health, Dental and Vision Insurance, 401(k) and more!

For information and the company application, please visit www.coalcountryhealth.com



STOP
at the
Beulah Beacon
(324 2nd Ave. N.E., Beulah)

or at the
Hazen Star
(26 E. Main Ave., Hazen)

for your school
and office
supplies

Well Child Checks Are You On Track?

Call to schedule an appointment today!

Coal Country Community Health Center is offering backpacks filled with fun!

Children ages 3-6 years old must complete their Well Child Check in the month of September to receive a backpack.



Coal Country Community Health Center
1312 Hwy 49 North, Beulah • 873-4445
510 8th Ave NE, Hazen • 748-2256
111 E Main Street, Center • 794-8798

INTRODUCING

the Newest Members of Our Beulah Clinic Behavioral Health Team...



Bruce Gillette, Licensed Addiction Counselor

Bruce provides alcohol and drug evaluations, Intensive Outpatient Programming and individual, group and family addiction counseling.



Linda Gillette, Licensed Addiction Counselor

Linda provides alcohol and drug evaluations and individual and family addiction counseling.



Talitha Schnaidt, Licensed Professional Counselor

Talitha provides professional counseling services at the Beulah and Center Clinic as well as Beulah, Hazen, and Killdeer School Districts with the I.M.P.A.C.T. Program.

Call 873-4445 for more information or to schedule an appointment.

Coal Country Community Health Center
1312 Hwy 49 N, Beulah • 873-4445
111 Main St. E., Center • 794-8798
510 8th Ave NE, Hazen • 748-2256

Visit our Web site: www.bhgnews.com



SMC Hospice Presents

Laughter is the Best Medicine

Fundraising Event

Saturday, Sept. 28

Featuring Comedian Spencer Dobson
Social Hour from 6-7 p.m.

(Mashed potato bar and all the fixings will be served during the social hour)

Show Starts at 7:15 p.m.
Hazen City Hall

Cash Bar Available All Night

Tickets \$30.00 in Advance \$35.00 at the door
Must be 21 Years of Age to Attend

Contact the Hospice office for more information or to purchase tickets 748-7380.



* Featuring a Live and Silent Auction *
Raffle Tickets Will Be Available All Evening
Winner To Be Drawn At The End Of The Night

Tickets are available now at Union State Bank Beulah & Hazen, Bronson's Liquor Store, and the Hospice Office.

Sakakawea Medical Center complies with applicable Federal civil rights laws and does not discriminate on the basis of race, color, national origin, age, disability, or sex.

Dunn County Farmstead and Land Auction

Tuesday, September 24th, 2019 • 6 p.m. MT

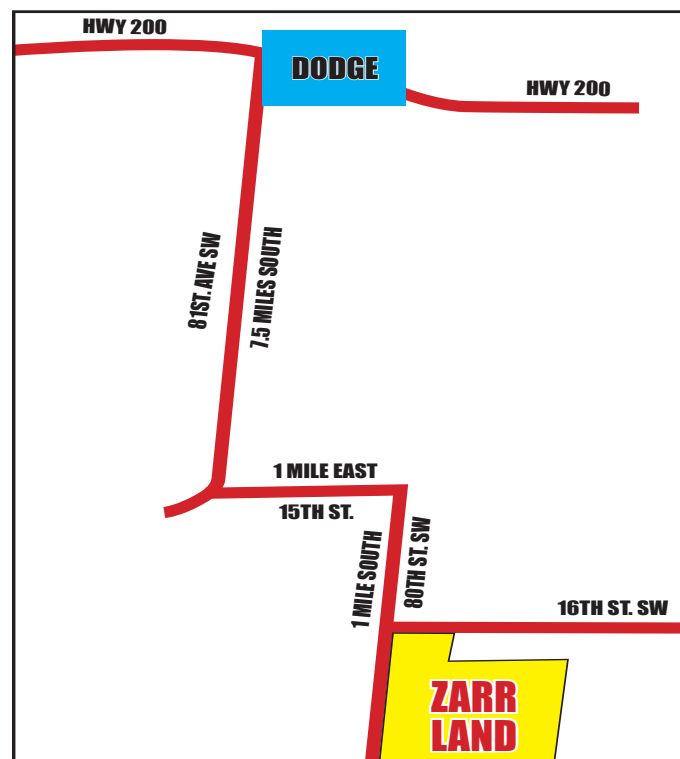
Auction conducted at the Dodge Community Hall, Dodge, ND

• Offering 520 Total Acres

• Tillable: 90.69 Acres

• Pasture Land & Farmstead: 429.31 Acres

• Pasture Land: Includes a spring fed dam, 90 acres of tame grass, well managed, and healthy



Farmstead:

House & Outbuildings:
Est. 1978 Ranch style home, 26x40 w/20x26 attached garage, 160ft well (services house and farmstead)
Full finished basement, 4 Bdrm, 2 Full Bath, Propane heat w/ 1000 gal. tank, masonite siding, steel roof in 2016, - Needs some updating
24x26 stick built garage, wired for 220
(2) Barns: 1- 30x40 Pole Barn style shed, 1- older barn
2018 taxes: \$744.98

Seller: Larry Zarr

For additional information on this auction and upcoming auctions go to www.wolffauctioneers.com



Visit our web site: www.wolffauctioneers.com

Personalized Wristbands!

Call or stop in for a quote!



324 2nd Ave NE • Beulah
873-4381

Great event souvenir!

ALL-NEW 2019 SILVERADO CREW CAB LT ALL STAR Z71

THE STRONGEST, MOST ADVANCED SILVERADO EVER.

\$5,750 Total Cash Allowance
 \$3,010 Price Reduction Below MSRP
 + \$1,000 Option Package Discounts

\$9,760 Total Value[†]



Programs end Sept. 30th

2019 Buick Encore AWD

Stock #BT1914



Up to 22% off MSRP
 for non GM owners

MSRP	\$28,485	2% Extra Hazen Motor Discount... - \$569
16% off Rebate.....	-\$4557	Now As Low As..... \$22,220
4% Conquest Rebate.....	-\$1,139	+ tax & lic.

2019 Blazer AWD

Stock #CT1977



MSRP.....	\$39,140	Purchase Bonus Cash....-	\$750
Hazen Motor Price.....	\$37,500	Sale Price.....	\$34,750
Customer Cash.....	-\$2,000		+ tax & lic

NEW 2019 Chevrolet Silverado 3500HD Crew LTZ, Diesel

Stock #CT1976



MSRP.....	\$69,115	Financed w/GM Financial	
Price Reduction Below MSRP....	-\$4,602	Purchase Bonus Cash.....	-\$1,500
Special Value Price.....	\$64,513	Sale Price.....	\$59,013
Customer Cash.....	-\$2,500		+ tax & lic
Cash Allowance When.....	-\$1,500		

GM Program Vehicles

2018 Buick Enclave Essence AWD SUV slate, gray, leather	19,000 miles.....	\$36,995
2018 Chevy Tahoe LT 4x4 white, leather, sunroof.....	23,000 miles.....	\$49,995
2018 Chevy Traverse LT AWD SUV silver	19,000 miles.....	\$33,995
2018 Chevy Cruze LT silver, certified.....	19,500 miles.....	\$17,295
2016 Chevy Equinox LT AWD SUV blue.....	27,500 miles.....	\$19,995

Used Cars

2015 Chevy Impala LT V6 black.....	29,800 miles.....	\$17,995
2014 Chevy Cruze Diesel maroon.....	39,300 miles.....	\$12,995
2006 Chevy Cobalt sedan blue.....	87,000 miles.....	\$3,995
2003 Pont Grand AM silver - as is needs timing chain		\$150
2003 Dodge Neon gray	97,100 miles.....	\$2,995

Used Vans & SUVs

2018 Buick Envision Essence AWD red	9,500 miles	\$28,995
2017 Chevy Traverse 2LT AWD white	28,000 miles.....	\$29,995
2016 GMC Acadia SLT sandstone.....	16,000 miles.....	\$29,995
2016 Chevy Equinox LT AWD black.....	49,800 miles.....	\$16,995
2016 Chevy Equinox LTZ 4 cyl FWD white	50,000 miles.....	\$15,995
2015 Chevy Equinox LTZ 4 cyl AWD blue	96,200 miles.....	\$15,995
2015 Chevy Trax AWD black.....	30,000 miles.....	\$14,995
2015 Buick Encore AWD white.....	56,000 miles.....	\$14,995
2013 Chevy Equinox 4 cyl AWD black.....	67,800 miles.....	\$12,995
2012 Chevy Equinox LT 4 cyl AWD black.....	138,000 miles.....	\$8,695
2012 Chevy Equinox LT 6 cyl AWD maroon	111,500 miles.....	\$8,995
2012 Chevy Traverse LT AWD white.....	143,000 miles.....	\$8,495
2014 Chevy Suburban LTZ 4wd champagne, loaded.....	75,000 miles.....	\$27,995
2013 Chevy Suburban LTZ 4wd pearl white, loaded	84,000 miles.....	\$25,995
2009 Chevy Tahoe LT 4wd silver, sunroof	150,000 miles.....	\$13,495
2012 GMC Acadia SLT AWD SUV blue.....	80,000 miles.....	\$13,995
2006 Chevy Uplander Van silver.....	145,000 miles.....	\$4,995
2006 Chevy Equinox V6 maroon.....	149,500 miles.....	\$2,595

HAZEN MOTOR Co.

HAZEN, ND • 701-748-2750 • Toll Free 877-261-6646



CERTIFIED PRE-OWNED

