

# Xtra

www.bhgnews.com



Published by BHG Inc.,  
to serve McLean and  
Sheridan Counties

PRSR STD  
US POSTAGE  
PAID  
Permit No. 22  
Garrison, ND

ECRWSS

Postal Patron  
Deliver By Monday  
Vol. 35, No. 26  
Monday, Nov. 4, 2019

The best circulation  
for your dollar

## Customer Appreciation Day

**Door prizes**

**Serving Lunch**

**In store specials**

**Tuesday, Nov. 5 • 11 to 2**

**1 DAY ONLY**

## SEAL UP FOR WINTER SALE



**4<sup>29</sup> 5<sup>89</sup>**

Discount case pricing available.



**3<sup>49</sup>**



**10% off all foam weatherstrip and window film kits**



**Medallion Interior Paint**  
**\$5 off per gal**  
Nov. 4-8

**In Stock Loose Lay Luxury Vinyl Flooring**



**3<sup>89</sup> per SF**

Two styles available.  
Many types of flooring available to order.



**DIAMOND KOTE<sup>®</sup>**  
Preferred siding supplier for



**10% OFF**  
ALTA Honeycomb Custom Shades through November

## CLEARANCE SALE



6" Diablo Sanding Disc



Leather Palm Gloves



Select Irwin Bits

**Watch for orange stickers**

**Cash and Carry:** Sale limited to stock on hand.



# Wagon Wheel Lumber

And Hardware Inc.

Hwy 83 • Washburn, ND • 462-8355  
For All Your Building Needs • An Employee Owned Company



# EXTENSION NEWS

Unharvested corn can be feed for cattle

**BY CALLA EDWARDS**  
MCLEAN CO. EXTENSION AGENT

The 2019 growing season has not been conducive for corn grain production in many areas of the northern Plains.

The late planting season, combined with cooler temperatures, has left many fields unharvestable or not cost effective for harvesting corn for grain, especially with late-season varieties. Alternative uses for corn include grazing, chopping it, harvesting as earlage or harvesting high-moisture corn and using it for livestock feed.

However, producers must



Calla Edwards

take precautions when grazing unharvested corn to assure animals don't develop health issues, North Dakota

State University Extension livestock specialists say.

## Grazing standing corn

"When grazing standing corn with cobs that are filled with grain, the grazing has to be managed to reduce any risk of causing health issues and even death to livestock," cautions Kevin Sedivec, Extension rangeland management specialist.

"Consuming too much grain can cause digestive upsets (acidosis), lameness, abortions, and death in extreme cases. Some issues will develop through time, making them difficult to detect."

Before turning cattle out to graze standing corn, make sure they're ready for it. After

a brief learning period, cattle will graze corn ears if any have developed. However, the cattle first need to adapt to a higher grain diet; otherwise, acidosis or other digestive disorders could develop.

"It is important to control the amount of corn and forage to which the animals have access," says Miranda Meehan, Extension livestock environmental stewardship specialist. "You can effectively do this by cross-fencing or grazing in controlled strips. This technique will reduce high overload of grain and waste through trampling.

"Cross-fencing and strip-grazing are usually recommended with access to no more than a two-day supply of fresh corn at a time; a one-day supply is even

better, especially for younger, growing cattle," she adds. "If you cannot limit feed grazing animals in standing corn, this option is not recommended because the risk for high death loss is great."

A basic rule of thumb for determining two days' worth of feed is that each acre of standing corn that is about 6 feet tall and tasseled should provide enough grazing for about 125 to 150 cows for one day. Observe animal behavior and the amount of grazeable corn each day, as well as in-field variations, to determine whether to increase or decrease the area allotted with each new grazing strip.

Do not bother with back fences so animals can travel

Extension news page 3

# SERVICE DIRECTORY

**MEDICAL**

**Northland HealthCenters**

Turtle Lake - Dental  
701-448-9111  
Hours: Mon-Thurs 8-5

Turtle Lake - Medical  
701-448-9225  
Hours: Mon 8-6:30; Tue-Fri 8-5  
www.northlandhc.org Find us on

You can now pay your bill online!

**REAL ESTATE/INSURANCE**

**WEST INKSTER REALTY**  
"Rec'd the Realty Dog"  
Mike Matteson  
OWNER/BROKER  
11 Central Ave E, Garrison, ND  
www.mikematteson.com  
gsbair@rtc.coop (email)  
(701) 463-2099 (office)  
(701) 337-6433 (cell)

**GARRISON INSURANCE**  
Insurance & Property Management  
Mike Matteson,  
Managing Partner/Agent  
Jean R. Witt, Agent  
Joetta Magandy,  
Customer Service Representative  
Dennis Hoffer,  
Property Management Assistant

Contact us for all your Real Estate and Insurance needs!

**SPECIALTY**

**Robi's Repair INC.**  
Dog Gone Clean Dog & Car Wash

Full Service Auto Repair for diesel, gas & transmission

Dynamometer testing for horsepower & torque

615 Burleigh Rd, Wilton  
734-6011 • robisrepair.com

**SPECIALTY**

**PRAIRIE CARPET SERVICES**

Joshua Benjamin  
Owner & Operator, Ruso, ND  
701-833-2884 • 701-448-2883

- Clean All Types of Flooring
- Carpet/Upholstery Cleaning
- Janitorial • Wall Cleaning • Air Ducts
- Flood & Fire Restoration
- Radon Test & Mitigation

Low Rates • Cash/Check/CC/Trade or Barter

**OPTOMETRISTS**

Optometrist  
**Dr. Schindler & Dr. Deis & Hellebush**  
N. Main Street • Garrison  
Monday, Tuesday, Thursday 9 a.m. - 5 p.m.  
463-2224 • 1-800-876-1067 (Bismarck)

**SPECIALTY**

**All Season Heating, Air Conditioning, Inc. & Sheet Metal**

Randy Bertsch • 701-833-9484

Serving the Garrison & Minot areas  
25 yrs. locally owned & operated

**Steve's PLUMBING Service LLC**

Owner  
Steve Zacharias

PO Box 1174  
Garrison, ND 58540  
701-460-7471 (Steve)  
701-460-7472 (TY)  
szach@restel.net  
Master Plumbing License #0012

**Eyecare Professionals**

Dr. James Helmers  
Dr. John Helmers  
Dr. Emily E. Zinke  
Dr. Anna L. Helmers  
Washburn 462-8636  
Mandan 663-2020  
1137 Border Lane, Washburn

**deeter Garrison Dental**

Dr. Matt Deeter | 701.463.2884  
Dr. Terry Deeter | 51 North Main St Garrison, ND 58540

Hours: Tues and Wed, 8 am - 5 pm  
After Hours: Contact Cathy at 701.509.6387 for appointments and concerns

**JB REPAIR, INC.**  
www.jbrepairinc.com

**ACDelco** **EZGO**

- Hunter Precision Alignments
- Road Force Tire Balance
- Tire Sales
- Full Service Automotive Repair

Golf Cars  
Trojan Batteries  
701-463-2054  
Jim Cell 701-337-6000  
Garrison, ND 58540

**PHARMACY**

Monday thru Friday, 9 a.m. - 6 p.m.  
Saturday 9 a.m. - 5 p.m.  
Pharmacy Open 9 a.m. - 1 p.m. Sat.

We guarantee low prices.  
Computerized pharmacy.  
All records kept for your insurance & tax purposes.  
Deliveries Mondays & Thursdays  
**Chase Pharmacy**  
31 N. Main Street  
Garrison • 463-2242

**L & P CONTRACTING, INC.**

- Pole Building
- Foundations
- Flatwork

15601 16th St. SW Minot, ND 58701 Lorn 701-721-2630

**Dakota Painting & Tree Service**

Interior • Exterior • Tree Trimming  
Residential • Commercial • Stump & Tree Removal

Tom Rupp Firewood Sales  
Cell 701-400-8864  
Licensed & Insured

**SPECIALTY**

**HAUGEN'S DRAIN SERVICE**

- Power Snakes
- Sewer Cleaning
- 24-Hour Service

"For those sluggish drains and backed-up mains"  
Residential-Commercial-Industrial  
Washburn • 462-3730  
Cell 315-0600

**GASOLINE AND DIESEL FUEL**

Are you receiving the best price on your Fuel? Call me for a Transport load quote today.

**LORI THOM**  
cell: (701) 720-1195  
business: (701) 852-1194  
e-mail: lthom@spfenergy.com  
Agriculture/ Construction/ Oilfield

**FARSTAD OIL, INC.**

**PRIME FIREWOOD SALES**

\*\*\*Assorted Hardwoods\*\*\*  
We deliver or you pick it up.  
Call Tom  
701-400-8864

Advertise here for  
**\$500**  
per week



# Support Democracy. Subscribe to Your Local Newspaper.

## EXTENSION NEWS continued from page 2

back to water.

Producers can mitigate the risk of grazing standing corn by:

- Carefully considering the class of cattle allowed to graze cornstalks. Cattle new to eating corn (calves or yearlings) will take some time before they actively seek corn. This delayed consumption can serve as a good acclimation period (or explain the suddenly dead calf after being on the corn field for two weeks). Cows with experience grazing corn will look for grain and ears immediately when turned out. Consider grazing calves, yearlings or cull cows on fields to clean up some of the corn before turning out pregnant cows.

- Adapting cattle to corn before turning out to graze corn stalks. Start with 3 pounds daily and move up to 7 or 8 pounds during a 10-day period before turnout.

- Cross-fencing fields to minimize the amount of the field that cows have access to at any one time. Early in the grazing period, this may mean moving the fence daily. Then progress to two-day moves.

- Not turning hungry cattle out to graze. Provide good-quality hay for two to three days so cattle don't overeat corn immediately. Cows experienced in eating ear corn will shell it off the cob.

- Watching the concentration of corn kernels in manure because as the amount of whole corn kernels in the manure decreases, the feed value in the field is decreasing. When you no longer find whole corn kernels in the manure, the cows will need supplemental feed or to be moved to new grazing.

### Chopping corn

Corn still can be chopped for feed, but achieving "true" silage likely will be impossible without adding water to the pile. Because most of North Dakota has experienced a killing freeze, the corn will be too dry to harvest as silage.

"The whole corn plant is probably running at 25-45 percent moisture, and even up to 60 percent, so harvesting as silage is still an option," says Karl Hoppe, Extension livestock systems specialist at NDSU's Carrington Research Extension Center.

"Silage that is below the recommended moisture content (65-75 percent) still should be chopped finer and packed repeatedly to remove as much oxygen from the pile, but it will not fully ferment; thus it is susceptible to spoilage."

Inoculates may be beneficial in speeding the onset of fermentation. Using products containing oxygen eliminators may enhance oxygen elimination. Silage piles should be covered with two-ply plastic to decrease spoilage and maintain the longevity of the pile.

"Producers also have chopped corn that was frozen and stored frozen," Hoppe notes. "This feed, if it remains frozen, will make good feed. However, frozen whole-plant chopped corn, when it thaws, will spoil next spring. So plan to harvest only what you can feed this winter season."

### Corn as earlage

Earlage is ensiled corn grain, cobs and, in some cases, husks and a portion of the stalk. Earlage allows the production of a relatively high-energy feed product, which can be harvested, stored and fed much like corn silage, using the same types of equipment used to produce corn silage.

It is higher in energy than corn silage with similar protein content, but it has lower energy than dry or high-moisture corn grain. Earlage is harvested at 35-40 percent moisture and packed and stored like silage. At harvest, cob material will be higher in moisture than grain. With earlage, the biggest problem usually is harvesting the corn when it is too dry.

Earlage can be harvested several ways. Many custom forage chopping operations have equipment to produce good-quality earlage. The most common harvesting method is a snapper head on a forage harvester with a kernel processor so that just the ear, cob and husk are harvested.

Earlage can be stored in bunkers, trenches and plastic silage bags. However, whatever storage method is used, oxygen must be limited. Earlage is denser than corn silage; consequently, ensuring that your unloading equipment and storage facility can handle the extra weight prior to filling is important. For more information, see the NDSU Extension publication "Harvesting, Storing and Feeding Corn as Earlage" ([tinyurl.com/Earlage](http://tinyurl.com/Earlage)).

### High-moisture corn

High-moisture corn offers many advantages for producers who feed beef or dairy cattle. However, successfully using high-moisture corn requires attention to harvest timing, processing, storage conditions and feeding management.

High-moisture corn is corn harvested at 24 percent or greater moisture (maximum 40 percent moisture), stored and allowed to ferment in a silo or other storage structure, and used as feed for livestock.

This type of corn should be processed (ground or rolled) prior to storage, Hoppe says. Grinding or rolling and subsequent packing of the corn facilitates oxygen exclusion. The goal with processing should be to have no more than 5 percent fines and no more than 5 percent whole kernels.


For feeding purposes, rolling is the preferred method of processing (compared with grinding) because rolling will result in less fines and lower probability of acidosis due to rapid fermentation when feeding.

At moisture levels below 27

Extension news page 4



**Totten Trail**



Lake Audubon • Hwy 83  
337-2070

B I N G O !

Tuesdays at 7 p.m.

1st Blackout: 56#s for \$1,400<sup>00</sup>  
2nd Blackout: 55#s for \$1,0200<sup>00</sup>



HAPPY HOUR

Monday-Friday 5-6 pm  
**\$1.00 OFF ALL DRINKS**

**BAR & GRILL**

**Mondays:**  
Smoked Sandwich

**Tuesdays:**  
Indian or Regular Tacos

**Wednesdays:**  
Buy 1 Burger, Get One 1/2 Price!

**Thursdays:**  
Broasted Chicken

**Fridays:**  
Fish/Seafood

**Saturdays:**  
Steaks/Prime Rib

**Sundays:**  
Pizza & Wings



## VETERANS DAY

Sausage and pancake dinner  
and turkey raffle

SUNDAY, NOV. 10  
11 A.M. TO 2 P.M.

TURTLE LAKE LEGION HALL

Freewill donation for Legion kitchen remodel project. Program and Bingo to follow dinner. Everyone welcome!





KOTA THEATRE

Main St., Garrison

Adults - \$7 Under 13 - \$5  
Where popcorn is still only 50¢

## Promiseland Designs

Upholstery, Repair, Leather Wear, Tack & Gifts

Dana & Rita Wright  
owners/designers

14 Main Street E  
Hazen, ND 58545

701-748-2261

promiselanddesigns@westriv.com • www.promiselanddesigns.com




Washburn

## Autumn Open Houses

Tuesday, Nov 5 4:30-6:00 PM\*\*

Your chance to view these great homes for sale!

<p><b>1076a US 83:</b> \$359,900 MLS# 402554</p> <p><b>1122 Sidney Rd:</b> \$239,900 MLS# 402550</p> <p><b>1108 Custer Dr:</b> \$189,900 MLS# 402303</p> <p><b>1051 Custer Dr:</b> \$169,000 MLS# 404472</p> <p><b>220 Coulee Dr:</b> \$225,000 MLS# 402593</p> <p><b>596 17th Ave SW:</b> \$299,999 MLS# 402372 <small>**OPEN 4:00-5:30PM</small></p>	<p><b>611 6th Ave:</b> \$155,000 MLS# 402318</p> <p><b>103 Eagles Way:</b> \$369,900 MLS# 319615</p> <p><b>214 3rd St:</b> \$225,000 MLS# 402814</p> <p><b>527 2nd Ave:</b> \$139,900 MLS# 403621</p> <p><b>118 7th St:</b> \$209,900 MLS# 404254</p>
--	---

More listing info:  
[Bismarckmandanhomes.com](http://Bismarckmandanhomes.com)

**CENTURY 21**  
Morrison Realty  
701.223.6654

**BLANCO**  
Realty  
701.224.1100

**Mike Nelson**  
Realty  
701.462.3709

CLOSED...  
Getting Ready  
for the Dickens  
Village Festival



Movies will return  
after Dickens!

## SCIPY HAM DINNER AND SILENT AUCTION

Sunday, November 10  
11 a.m. to 1 p.m.  
McClusky City Hall




Ages 5 and under, free; Grades K-8, \$5;  
Grades 9 through adult, \$9;  
Maximum \$30 per family

As a Thank You: Veterans eat Free



### EXTENSION NEWS

continued from page 3

percent, water may need to be added to facilitate packing and fermentation. A good rule of thumb is to add 3.5 gallons of water per ton of corn for each percentage point the corn is below 27 percent moisture.

"This is the best option for large volumes of corn harvested in a short period of time but will require a large-volume roller or hammer mill to process grain rapidly," says Janna Block, livestock systems specialist at NDSU's Hettinger Research Extension Center. "Packing is done with tractors, which may be equipped with a dozer blade or front-end loaders.

"During feed out, the face of the bunker must be kept fresh

to avoid heating, so the width of the high-moisture corn bunker should match the rate of use," she says. "Bunkers constructed of a cement base and sides will reduce spoilage better than earthen structures and provide a firm surface for equipment throughout the year."

The specialists also recommend that producers take care when feeding high-moisture corn because it has a faster ruminal digestion rate than dry corn.

Consequently, better bunk management typically is required for successful feeding. For more information, see the publication "Harvesting, Storing and Feeding High-moisture Corn" ([tinyurl.com/High-moistureCorn](http://tinyurl.com/High-moistureCorn)).

### Plan for long-term care

BY MICHELLE EFFERTZ  
4-H YOUTH EXTENSION AGENT

No one wants to envision spending their later years living in a nursing home or being dependent on the help of others to live at home, yet most Americans will need long-term care at some point in their lives.

Planning for long-term care needs is crucial for financial security and peace of mind. Long-term care is an umbrella term for services and supports designed to help people live independently on a daily basis, such as eating, bathing and dressing, either in a care facility or one's home. A misconception is that health insurance, Medicare or disability insurance cover these services, but they do not.

Medicaid does cover long-term care services, but you only qualify if your income and assets do not exceed levels set by your state. You can purchase long-term care insurance, annuities or other hybrid or combination products. The



Michelle Effertz

other option is to pay for it with savings, pensions or income from investments.

According to the Genworth 2017 Cost of Care Survey, the national median annual cost for long-term care ranges from \$47,934 to \$97,455, depending on the type of care needed.

Paying for long-term care may be one of the largest financial investments a person or the person's family will make.


To start the planning process, here are some important steps:

- Think about your ultimate goals for where you want to live and how you will receive care, should you need it.
- Consider your unique needs, such as risk factors for long-term care. Risk factors include age, gender, disability, health status and living situation.
- Understand the range of long-term care services and supports, including home care, adult day care, assisted living and nursing homes.
- Do the research so you know the costs of long-term care services in your community.
- Determine what financial resources you have to cover long-term care and address any gaps in financing before you need it.

The best time to plan is when you are healthy and have time to plan. The earlier, the better, just like with financial retirement planning. Planning for long-term care needs is not just about you. It is really a family plan because it impacts the lives of those who care about you, too.



**REYNOLDS**  
INSURANCE AGENCY EST. 1946



HEALTH INSURANCE  
2020 OPEN ENROLLMENT  
NOVEMBER 1<sup>ST</sup> TO DECEMBER 15<sup>TH</sup>

**Contact Loren Johnson for your Health Insurance Needs**

Email: [ljins@nccray.com](mailto:ljins@nccray.com) | [www.reynoldsinsurance1946.com](http://www.reynoldsinsurance1946.com)  
PO Box 850 | 301 Main Street, New Town, ND 58763  
Office: 701-627-4293 | [f@ReynoldsInsuranceAgencyNT](https://www.facebook.com/ReynoldsInsuranceAgencyNT)

## Resources available for assisting with farm stress

With crops unable to be harvested, hay sitting in floodwaters and livestock either still in the pasture or already on feed, farm and ranch stress is impacting communities across the state. But local community groups and individuals have offered a helping hand.

"There are some wonderful community support groups,

clergy and other individuals who have stepped up to assist others in this time of need. It truly is people helping people," Agriculture Commissioner Doug Goehring said. "With needs increasing, these groups and individuals are feeling the toll and are looking for more resources."

Groups and individuals

needing more resources to support their friends and neighbors are encouraged to reach out to the North Dakota Department of Human Services at [behavioralhealth.nd.gov/prevention/suicide](http://behavioralhealth.nd.gov/prevention/suicide) or 701-328-8736 whether they need materials, access to professionals, more training or other tools.

# 25% OFF ALL MERCHANDISE NOVEMBER-DECEMBER



**Monday-Saturday  
9 a.m. to 5 p.m.**  
Corner of US 83 and 200A • Washburn  
701.462.8535

**NORTH Dakota** | Lewis & Clark INTERPRETIVE CENTER  
Be Legendary.™



# CALENDAR

## Saturday, Nov. 2

Garrison City Landfill, 8 a.m. to noon and 1-5 p.m.  
German Supper, St. Paul Lutheran Church Garrison, 4-7 p.m.

## Sunday, Nov. 3

Annual Fall Festival, Immaculate Conception Church in Max, 10:30 a.m. to 1 p.m.  
BFLG Annual Meeting, Totten Trail, Social 5:30 p.m., Dinner 6 p.m. New members welcome  
SACA Singers rehearsal, Kota Theater, 1 p.m.

## Monday, Nov. 4

WIC nutritionist available at the Washburn office. Call 462-3330 to schedule an appointment.  
McClusky Job Development Authority meeting, 7 p.m.  
McClusky Fire Department meeting, 8 p.m.  
Goodrich City Council meeting, 5 p.m.  
Martin City Council meeting, 7 p.m.  
Yoga, First Congregational Church, Garrison, 8 a.m.  
Bone Builders exercise, Garrison Senior Center, 10 a.m.  
McLean County Farmers Union meeting, Garrison Senior Center, 6:30 p.m.  
Underwood School JH/HS fall concert, 8 p.m.

## Tuesday, Nov. 5

McLean County Commission meeting, 8:30 a.m.  
Sheridan County Commission and Park Board meeting, 12:30 p.m.  
Butte Seniors Tuesday Club – Every Tuesday at 1 p.m. Get together with the crowd over 55, sing and play games.  
Food Bank at Sheridan County Courthouse is open from 9 a.m. to noon.  
Pickleball, Garrison elementary gym, 7 p.m., beginners welcome.  
Friends of the Library meeting, Garrison Public Library, 7 p.m.  
Wagon Wheel Lumber customer appreciation day. Serving lunch 11 a.m. to 2 p.m.  
A meeting of Washburn's new community group, which will replace Civic Club and the Washburn Area Economic Development Association is set for 2:30 p.m. Location TBD.  
Washburn open house, 4:30-7 p.m. See ad for full details.

## Wednesday, Nov. 6

Whatever Wednesday – Trinity Lutheran Church, Turtle Lake, each Wednesday from 2-4 p.m. 448-2551  
Foot care clinic available at the senior center, Douglas. Call 463-2641 to schedule an appointment.  
Yoga, First Congregational Church, Garrison, 8 a.m.  
Garrison City Landfill, 1-5 p.m.  
Underwood Civic Club meeting, noon, city hall.  
Free well baby clinic, 1:30-3:30 p.m., Northland Health Center, 416 Kundert St., Turtle Lake. 701-448-9225  
Wilton City Commission meeting, 7 p.m.

## Thursday, Nov. 7

Bone Builders exercise, Garrison Senior Center, 10 a.m.  
Veterans Day Program, GHS gym, 1:30 p.m.  
Pickleball, Garrison elementary gym, 7 p.m., beginners welcome.  
Community Clothing Share-Exchange open 10 a.m. to 6 p.m., Nov. 7, 14, 21, at 221 Main St., Turtle Lake.  
Community Cupboard of Underwood open 4-6 p.m. at 208 Lincoln Avenue.

## Friday, Nov. 8

Yoga, First Congregational Church, Garrison, 8 a.m.  
Garrison City Landfill, 1-5 p.m.

## Saturday, Nov. 9

Holiday bazaar, 9 a.m. to 4 p.m., Hazen City Hall.  
SACA's annual soup and bread lunch, 11 a.m. to 1 p.m., SACA Lodge, Garrison, with Friends of the Library bake sale.  
Carl and Heather Riemer baby boy shower, 2 p.m., Douglas Senior Center.  
Annual soup, sandwich and bake sale, 11:30 a.m. to 1:30 p.m., St. John's Lutheran Church, McClusky.  
Fall frenzy, 11 a.m. to 4 p.m., Wilton Memorial Hall.

## Sunday, Nov. 10

Harvest fest, 10 a.m., Birka Lutheran Church.  
SACA Singers rehearsal, Kota Theater, 1 p.m.  
Sausage and pancake dinner and turkey raffle, 11 a.m. to 2 p.m., Turtle Lake Legion Hall.  
SCiPY ham dinner and silent auction, 11 a.m. to 1 p.m., McClusky City Hall.

## Preschool screening

Preschool screening for the 2019-2020 school year at the Underwood School. Call Chrissy at 442-3274 for an appointment.

## Submit an event

To announce your free public event in the Xtra Calendar, simply fill out the form below. The form must reach the Washburn office by Wednesday. Mail to the Xtra, PO Box 340, Washburn, ND 58577; email: [leadernews@westriv.com](mailto:leadernews@westriv.com); phone: 701-462-8126.

Event: \_\_\_\_\_

Date: \_\_\_\_\_

Time: \_\_\_\_\_

Location: \_\_\_\_\_

Contact: \_\_\_\_\_

# POINTERS FOR POINTS

BY NICK SIMONSON  
DAKOTA OUTDOORS

Hunting upland birds behind a pointing dog can provide some of the biggest thrills in the outdoors. Few moments stand out in the fall like a quivering tail on a rock-solid dog holding just inches from an unseen bird buried in the grass. The tension and anticipation coming from those memorable seconds over fifteen years behind two pointing labs has not waned for me, and my heart still jumps into my throat as the word "steady" works its way out in as calm and low of a voice as I can muster to reassure my dog that I am on my way to see what he's pinned down.

However, connecting on a pointed and flushed bird can be more challenging than it seems, and even a decade and a half down the road, a miss or two still makes it into my hunting journal when recapping what seemed like a sure thing.

### Know how it ends

The end result is often fifty-fifty on hens or roosters flushing (though it may seem like hens are the primary offering some days), or sometimes it's a group of birds like grouse, partridge or young of the year pheasants that are bunched up at the end of an area of cover.

Whatever the situation, the moment of pause that points provide gives hunters a chance to get set up for the shot and to convert whatever is being held in check.

Some pointers are trained to allow the hunter to flush the bird and some, like my dogs, have been trained to release on a command and send their quarry into the sky. Knowing your dog – or the dog you may be hunting with – and how they release the bird from their point is as important as what comes after the flush.

In the time leading up to that moment, getting in position is crucial, knowing that a skittish pheasant may burst from cover at any time on the approach. Move quickly, but calmly, reassuring the dog only as needed and doing so in a hushed voice if possible or necessary.

While the field mount pattern I have developed over the years does not release the safety on the gun until the stock hits my shoulder, and I don't raise the gun until the bird hits the skyline and is clear of the dog and any obstructions in the distance, I have seen many others be fully or partially mounted as they come up behind their pointer. Find the pattern

that works for you, and continue to develop it this fall and in the seasons to come.

Continue to keep safety and awareness of your surroundings while you prepare for the shot, and be aware of the behaviors of the dog holding nearby, which may jump or pursue the bird after the flush, depending on age, breed or training level. If the dog isn't yours or you're not familiar with it, it is important to ask the owner about what to expect on a point before entering the field, so you can be ready and safe.

### Know the shot

With all the excitement and anticipation building up to the flush, it's possible to rush the shot, prematurely fire and miss the bird entirely. Remember to breathe on approach to the point, taking a deep calming breath and thinking about what's to come in a manner that relies on previous experience and a positive mindset of converting the point to a flush, to a mounted gun, to a shot, to a bird in the bag.

While the visualized ideal scenario is rarely what results,

something similar to it often does, and the chain of events may not differ much from what actually happens. Positivity and mental preparation, even in just that second or two before the moment of truth, goes a long way toward converting in any situation, including hunting.

Additionally, as part of that preparation, knowing your shotgun, choke tubes and the load you're shooting is important in connecting with a pointed and flushed bird. In my younger days, when I shot a single-barreled pump gun, I usually utilized a modified choke in early fall and a full choke later in the season. I could take down far-flushing birds in December, and often did.

However, having hunted behind a pointing dog and enjoying those moments even more as what I seek from my hunting experience has changed over time, even if some birds flush wild, I'll often hold off on rangy roosters and wait for a point, or a closer-flushing bird, and utilize an improved cylinder in my first barrel and modified

Pointers page 7



*Veterans,  
you're  
invited!*

**Join us for a special  
breakfast honoring  
your service**

*FREE and open to area  
veterans and their guest!*

**MONDAY, NOVEMBER 11  
8:30-10:30 A.M.**

*Held in The Meadows main dining room*

**The Meadows | 719 4th Ave. NE, Garrison**

Please RSVP to **(701) 463-2226**

[blcgarrison.com](http://blcgarrison.com)

**The Meadows**

BENEDICTINE LIVING CENTER OF GARRISON

short-term care and rehabilitation | long-term skilled nursing care  
inpatient and outpatient therapy | bariatric services | Veterans programs  
independent senior housing with assisted living services  
restorative care | end of life care

**Fall Frenzy**

Wilton Memorial Hall  
105 Dakota Ave. ~ Wilton, ND  
Saturday, November 9, 2019  
11:00 am - 4:00 pm

Join us for our 4th Annual Fall Frenzy Craft & Vendor Show - a fun day filled with shopping, good food and friends!!

- Bring in non-perishable food items to help stock the Wilton Food Pantry
- Lunch available for purchase
- Sunne Lutheran Youth Bake Sale
- Door prizes



# THE CLASSIFIEDS

**• DEADLINE:** 9 a.m. Thursday.  
**• CLASSIFIED WORD ADS:** Terms – Cash, Check, Visa or Mastercard.  
**• COST:** \$8 a week for 20 words, each additional word is 25 cents. Half price for each additional week. Can be placed in other papers for half price. Giveaway ads are FREE one week only.  
**• CLASSIFIED DISPLAY RATE:** \$9.50 per column inch.  
**• CONTACT INFORMATION:** Phone: 462-8126 • Fax: 462-8128  
 Email: leadernews@westriv.com • Website: bhgnews.com  
 Mailing address: The Xtra, PO Box 340, Washburn, ND 58577  
**• DELIVERY PROBLEMS:** If you're having any problems getting your Xtra - when and if - we want to know. Call our Garrison office at 701-463-2201 or 1-800-658-3485 when you want to report problems.

## Announcements

**HOLIDAY CRAFT,** bake and vendor sale, 10 a.m. to 3 p.m., Saturday, Dec. 7, Underwood City Hall. \$13 per space. To reserve table space, call Alice Landenberger, 701-442-5310.  
 24-29-E-X 58577

**WANT TO SAVE** some money? Check out the specials in this week's Xtra. If you're not receiving the Xtra, call this newspaper and we'll make sure you do. 701-463-2201 or 1-800-658-3485.  
 1-E-TFN-NC 58540

**SUPPORT GROUPS:** Alcoholics Anonymous Hotline, 888-680-0651. AA meetings in Center on Sundays at 5 p.m. CT at St. Paul's Lutheran Church (794-3381); in Garrison, Garrison Memorial Hospital Cafeteria, Thursday at 8 p.m.; in Washburn on Sundays at 7 p.m. at First Lutheran Church (701-460-1373 or 701-202-6701); in Wilton, Mondays at 7 p.m., Sacred Heart Church, 734-6533. Open meeting, Butte, Call 626-7402 or write Box 244, Butte, ND 58723; in McClusky, Grace Lutheran Church, 402 4th St. W, Sundays at 8 p.m. Positive Changes NA, Fridays at 7 p.m., Washburn United Methodist Church, 701-460-0663.  
 1-E-TFN-NC 58540

## Giveaway

**5 GALLON JUGS,** for industrial purpose only: not to be used for human or animal consumption/food or beverage. Pick them up at the McLean County Independent office at 91 North Main Street, Garrison, ND.  
 15-TFNXCIX 58540

## Help Wanted

**NOW HIRING**  
**Servers**  
**Bartenders**  
**Cooks**

Daytime or evening hours. Will train. Flexible schedule. Call 442-3033 or stop in for application.



**Hwy 83, Underwood**

## Help Wanted

### HELP WANTED

**Steve's Plumbing Service, LLC** in Garrison, ND is looking for **full-time Apprentice** or a **Licensed Journeyman plumber.**

Competitive wages and benefits D.O.E. Call 701-460-7471 or email a resume to szach@restel.net



## HELP WANTED



**OF GARRISON**  
**Night Time & Weekend Cashiers**



**All Shifts Available**

**Must be able to work weekends.**  
**Stop in for an application.**

## HELP WANTED

### Coaching Positions

Garrison Public School District is seeking applications

- BASKETBALL CHEER COACH Winter HS Head & JH Head
- BOYS BASKETBALL -SPRING Elem. Head & Assistant
- TRACK COACH -SPRING Two Assistant Coaches

Please stop by Garrison High School for an application. Applicant must include a resume and three references.

Contact Nick Klemisch at 463-2818 for more information.

## Help Wanted



GENERAL SECURITY SERVICES CORPORATION™

### Washburn & Center, ND

Qualified applicants must be professional, punctual, engaged persons with an excellent work ethic. Employment contingent on passing a criminal background check. Please call (218-726-1606) or email Bill (BillL@GSSC.net) for more information.  
 EOE/AA/Disability/Veterans/M/F Employer  
 Immediate full-time & part-time openings!

## DEPUTY AUDITOR POSITION

The City of Garrison, ND is accepting applications for the position of a Deputy Auditor.

Applicants need to be self-motivated, highly organized, have excellent customer service skills and the ability to multi-task. Applicants should have knowledge of accounting procedures and Microsoft Office to include, Word, and Excel. Compensation is negotiable.

A complete job description can be obtained by contacting the City of Garrison Auditor's Office at PO Box 459 Garrison, ND 58540; by calling 701-463-2600; or by emailing [garrisoncity@rtc.coop](mailto:garrisoncity@rtc.coop). Applications must include a resume and references. Submit applications to Garrison City Hall.

*The City of Garrison is an equal opportunity and at-will employer.*

## Catch the Great Bargains in the Classifieds!

phone 462-8126 • fax 462-8128 • email leadernews@westriv.com



**GREAT RIVER ENERGY**

**Powering what's possible**

*The power that makes Great River Energy an industry leader is our employees.*

## Associate Chemist

Located at Coal Creek Station in Underwood, ND

- Collect and analyze process samples
- Safely operate the chemical injection, water treatment, and demineralizer systems for maximum efficiency and output.
- Bachelor's degree in Chemistry or a science field. Will train qualified candidates.

If you're ready to work in an environment that's rewarding, challenging and exciting learn more at [www.greatriverenergy.com](http://www.greatriverenergy.com) under the Careers tab by November 15, 2019.

*GRE is an EEO/AA/Minority/Female/Disabled/Vets Employer.*



**GREAT RIVER ENERGY**

**Powering what's possible**

*The power that makes Great River Energy an industry leader is our employees.*

## Sheet Metal Insulator

Located at Coal Creek Station, Underwood, ND

- Provide routine and emergency maintenance on mechanical equipment to ensure safe, efficient and reliable electrical plant operation.
- Completes maintenance repairs for the removal and installation of sheetmetal, insulation and fabrication.
- A two year associate degree in related field or equivalent experience with mechanical, welding, and machining is required.

If you're ready to work in an environment that's rewarding, challenging and exciting learn more at [www.greatriverenergy.com](http://www.greatriverenergy.com) under the Careers tab by November 7, 2019.

*GRE is an EEO/AA/Minority/Female/Disabled/Vets Employer.*

## LOAN OFFICER – BEULAH BRANCH

Join our growing team of full service agricultural financial experts in our Beulah, ND branch office.

We are seeking a motivated individual who fits our customer-service oriented culture to be responsible for marketing and providing all credit and related services for an assigned portfolio. Some travel required, minimal overnight stays. Bachelor's degree in agricultural economics, finance, business administration or other applicable field with appropriate finance and accounting courses required. Proven written and oral communications skills, time management skills, current knowledge of farm / ranch production methods, products and business management required.

We offer competitive compensation with base plus incentive pay structure; excellent benefit package; job training and continuing education and work/life balance flexibility.

Email resume and cover letter to [Mandan.HRDept@farmcredit.com](mailto:Mandan.HRDept@farmcredit.com)

EEO/AAP – M,F, Veterans, Disability



**Farm Credit Services of Mandan**

## Help Wanted

### CUSTOMER SERVICE REPRESENTATIVE

Growing insurance agency in Wilton is looking to add a Customer Service Representative. Insurance experience helpful. Insurance producer license required within 180 days of hire. Please send resume to Todd: [tnewton@westernfrontierins.com](mailto:tnewton@westernfrontierins.com), Western Frontier Insurance Agency, PO Box 459, Wilton, ND 58579 or call 701-734-6318.



BENEDICTINE LIVING CENTER OF GARRISON  
 Benedictine Health System

### HELP WANTED

*Come Join Our Team!!*

#### • RN/LPN

Full Time days

Apply at [www.blcgarrison.com](http://www.blcgarrison.com)  
 Or call Jody Lawson at (701)463-2226

"EQUAL OPPORTUNITY EMPLOYER"



BENEDICTINE LIVING CENTER OF GARRISON  
 Benedictine Health System

### HELP WANTED

*Come Join Our Team!!*

#### Full-Time CNA

Not a CNA? We can help!  
 Benefit Eligible

Starting wage \$14.56

Apply at [www.blcgarrison.com](http://www.blcgarrison.com)  
 Or call Jody Lawson at (701)463-2226

"EQUAL OPPORTUNITY EMPLOYER"



**Help Wanted**



**Service Technician**

Are you looking for opportunities to make an impact? Find your place at RDO!

Are you an experienced diesel technician looking for a better opportunity with a family owned company in the Washburn area that provides a work/life balance? Our Washburn location is looking for an individual who will be responsible for the repair of agricultural equipment and components at high levels of quality.

- As a Service Technician, you will receive:
- Opportunity for a sign on bonus of up to \$15,000
  - Competitive wages
  - Profit sharing
  - Company paid training
  - Opportunities for advancement and growth

Founded in 1968, RDO Equipment Co. sells and supports agriculture, construction, environmental, positioning, surveying, and irrigation equipment from manufacturers including John Deere, Vermeer, Topcon, and senseFly. With 78 locations across the United States and partnerships in Australia, Mexico, Russia, and Ukraine, RDO Equipment Co. is a total solutions provider. Learn more at [www.rdoequipment.com](http://www.rdoequipment.com).  
EOE/M/F/Disabled/Veteran

**Services**

**JUST A NOTION!** is taking in clothing alterations and repair; knit/crochet repair. Call for free consultation! Charlene Binsfeld, Washburn, 701-220-5831. 9-34-E-PD 58577

**Work Wanted**

THIS NEWSPAPER offers free job wanted ads to anyone seeking employment at a local or area business. List your job skills or the type of work you are seeking. A free ad of up to 25 words may run up to a month in this newspaper. Email your ad to [leadernews@westriv.com](mailto:leadernews@westriv.com). 1-E-TFN-NC 58577

**Statewides**

**HELP WANTED BUILDING SERVICE TECHNICIAN.** NDSCS has FT, 12 month benefited position with custodial /minor maintenance duties in Wahpeton. Hours Sun/Thurs: 2 pm – 10:30 pm. Includes full benefits: Health/Life, Retirement, EAP, Leave, Tuition Waiver, Dependent Tuition Discount, etc. Screening begins immediately - applications accepted until filled. Interested candidates must complete the online application. EOE. For more information go to: [www.ndscs.edu/hr/](http://www.ndscs.edu/hr/)

**COMMERCIAL APPLICATORS.** Competitive wage and benefits, meal allowance, paid lodging. Traveling position for railroad vegetation control, 60-80 hours/week. RAW (Cooperstown, ND). 888.700.0292 | [www.rawapplicators.com](http://www.rawapplicators.com) | [info@rawapplicators.com](mailto:info@rawapplicators.com)

**FARMERS UNION OIL** in Portland is looking for a full-time truck driver in the propane department. CDL required, hazmat and CETP training preferred. Full single benefits, paid vacation and 401k. Pick-up application at Portland station or call 701-788-3760.

**LOOKING FOR THE** most complete listing of ND Media? Get 2019 ND Media Guide for Only \$25! Call 701-223-6397, ND Newspaper Association.

**FINANCIAL SERVICES** OVER \$10K IN Debt? Be debt free in 24 to 48 months. No upfront fees to enroll. A+ BBB rated. Call National Debt Relief, 701-936-8487.

**EDUCATION /TRAINING TRAIN AT HOME TO DO MEDICAL BILLING!** Become a Medical Office Professional online at CTI! Get Trained, Certified & ready to work in months! Call 701-929-9679. (M-F 8am-6pm ET)

**COMPUTER & IT TRAINING PROGRAM!** Train at home to become a Computer & Help Desk Professional now! Call CTI for details! 701-929-9484 (M-F 8am-6pm ET).

**APARTMENT FOR RENT** LOOKING FOR AN APARTMENT in Watford City or Williston? Orange Property Management has a variety of spacious layouts at our new low pricing! Contact us at 701-566-3140 to learn about our special offers!

**REAL ESTATE FOR SALE** ND FARM LAND Values surge upward. Are you selling or renting? Pifer's Auction and Farm Land Management. Bob Pifer 701.371.8538. Kevin Pifer 701.238.5810. Free valuation.

**MISCELLANEOUS FOR SALE** ANYONE CAN RUN STATEWIDE with HELP WANTED ads in all ND papers with NorthSCAN! \$160 /25 words / 89 papers. Contact your newspaper or NDNA, 701-223-6397.

**FUR BUYER** ATTENTION WESTERN North Dakota Hunters/Furharvesters. Petska Fur running Bi-Monthly routes. Actively seeking Coyotes, Lynxcats, Fox, Coons, Deer/Elkhides and Antler. Coyote market exceptional. 308-870-4887. [www.petskafur.net](http://www.petskafur.net).

**Statewides**

**AUTOS WANTED** DONATE YOUR CAR TO CHARITY. Receive maximum value of write off for your taxes. Running or not! All conditions accepted. Free pickup. Call for details. 701-809-7415

**HEALTH/MEDICAL** CBD OIL WORKS! Pain, stress relief. Organic CBD. Purchase for personal use, plus great business opportunity for distributors! Visit website for info: [michaeljacobson.greencompassglobal.com](http://michaeljacobson.greencompassglobal.com)

A PLACE FOR MOM has helped over a million families find senior living. Our trusted, local advisors help find solutions to your unique needs at no cost to you. Call 1-701-404-5808.

**ATTENTION: OXYGEN USERS!** Gain freedom with a Portable Oxygen Concentrator! No more heavy tanks and refills! Guaranteed

**Statewides**

Lowest Prices! Call the Oxygen Concentrator Store: 701-404-5994. (24/7)

**CASH SETTLEMENTS** Recently diagnosed with LUNG CANCER and 60+ years old? Call now! You and your family may be entitled to a SIGNIFICANT CASH AWARD. Call 701-404-5389 today. Free Consultation. No Risk.

**MISCELLANEOUS** JUNK FEST, DECEMBER 14, 2019 in Mayville, ND. For more information call 701-866-1526 or email [fayesquilting@gmail.com](mailto:fayesquilting@gmail.com) or go to [www.mayvilleportland.com/winterfest](http://www.mayvilleportland.com/winterfest)

WE MAKE IT easy to place an ad in one or all 89 North Dakota newspapers. One order, one bill, one check. We provide the ad design and tear sheets. Call the North Dakota Newspaper Association, 701-223-6397.



Knowing the habits of a pointing dog in the field, how birds will likely flush and the specifics of your gun, choke and patterning will help put more pheasants and other upland game on the tailgate at the end of the trail. NICK SIMONSON

**POINTERS** continued from page 5

choke in the second pipe of my over-under.

I know that this more open combination provides a wider pattern which helps me connect better with pointed pheasants which even in late season flush closer to me. Even with those close-flushing birds, it's important to let the shot set up to the pattern of the shell and choke tubes being used.

A rooster shot at 5 yards with any gun is often turned into hamburger if it gets hit, but more often is missed as the pattern is too narrow. With many specialty upland loads designed to carry out to effective ranges of 40 or 50 yards, it may take longer and seem counter-intuitive to let the bird get out, but it's likely you have a second or two to let the situation develop and the bird to wing it into the ideal shooting range.

Having this factor covered in your point-to-shot itinerary comes down to patterning your shotgun ahead of the hunt and learning to judge distance effectively. The former takes about 15 minutes at a shooting range, the latter may take months or years, and certainly can be affected by adrenaline and excitement on any given day. Prepare for the point with

knowledge of the dog, your firearm and load, and with the mindset that each shot presents a chance that you can and will convert on.

**AUCTION**

**November 1st, 2019 @ 6 PM CT** Owner: Henry Miller Family, Offering 320 Acres in Eastern Mercer County, Legal Description: S2-SEC.19-145-84, Location: Civic Center, Stanton, ND. Wolff Auctioneers  
**Nov 3 - 12:00 pm CT** - Underwood Warehouse Grocery - Business or Forklift, Butcher, Bakery, Store Items - G & G AUCTIONEERS-701-878-4001 <http://www.midwestauctions.com/gandg>  
**Nov 2-10:00 am CT**- Solen Consignment Auction- Solen, ND - G & G AUCTIONEERS 701-878-4001 [www.midwestauctions.com/gandg](http://www.midwestauctions.com/gandg)  
**Nov 15-1:00 pm CT**-ABSOLUTE Real Estate Auction- Hazen, ND - G & G AUCTIONEERS 701-878-4001 [www.midwestauctions.com/gandg](http://www.midwestauctions.com/gandg)  
**Nov. 6 – 11 a.m.** Loren and Kristen Henke Auction, Baymont Inn & Suites, Mandan. Pifer's Land Auctions, [pifers.com](http://pifers.com) • 877-700-4099.  
**December 7th, 2019 @ 10 AM MT** Offering: 161 Guns, Buckskin Bar & Grill, 64 Central Ave S, Killdeer, ND. Wolff Auctioneers

**HELP WANTED**



is looking for **SALES ASSOCIATES** Full Time or Part Time

Stop in for an application 200 5th Ave SE, Garrison

**HELP WANTED**



is looking for **Cooks, Servers & Bartenders**

Apply in person or call 701-337-2070

Lake Audubon • Hwy 83 337-2070

**Notices**

HAVE YOU BEEN in a relationship where you were emotionally or physically battered? Call McLean Family Resource Center, 701-462-8643 24/7, Washburn. The office hours are 9 a.m. to 5 p.m., Monday through Friday. 1-E-TFN-NC 58577

**Real Estate for Rent**

**NOW RENTING**

**Heritage Heights Apartments** 1040 Custer Dr., Washburn  
 New management, remodeled rooms, lower rates. 1 or 2 bdrm. apts. All utilities paid including cable. 701-527-4739 or Manager 701-220-8145

**Real Estate for Sale**

ALL REAL ESTATE advertising in this newspaper is subject to the Fair Housing Act that makes it illegal to advertise "any preference limitations of discrimination based on race, color, religion, sex, handicap, familial status or national origin or any intention to make any such preference, limitation or discrimination." Familial status includes children under the age of 18 living with parents or legal custodians; pregnant women and people securing custody of children under 18. This newspaper will not knowingly accept any advertising for real estate that is in violation of the law. Our readers are hereby informed that all dwellings advertised in this newspaper are available on an equal opportunity basis.

**Services**

I HAUL away broken vehicles and scrap metals for FREE! Ca\$h for Some. 833-2884. U call, I Haul. 44-TFNALL 58540

**HELP WANTED**



**Turtle Lake Hospital**

**Part-time Clinic Nurse**

Experience preferred but not required. Contact Brenda 701-448-2331 ext 207. This institution is an equal opportunity provider and employer.

**Livestock**

TURTLE LAKE WEIGH STATION will be shipping cows and bulls out Nov. 4 and Nov. 18. Have them there by 11 a.m. Call Darin, 701-315-0144. 43-TFN-E-X 58577

**Lost and Found**

LOST: FISHING TACKLE Box in Garrison or Hwy 37, REWARD! 463-2333. 26-1TNCIX 58540

**Misc. for Sale**

FOR SALE: Siemans 200 amp Heavy Duty Stainless Steel, 600 VAC HP Rated. NEMA 4/4x safety switch rated for outdoor use Model #hnf364S \$1150/each. Call Brad, 701-870-4228. 21-28-E-PD 58523

USED ALUMINUM PRESS Plates. 23 x 35, two for \$1 available at the McLean County Independent, Garrison. 463-2201. 1-E-TFN-NC 58577

ORDER PRINTS, custom mugs, puzzles and more of pictures from all BHG newspapers at [bhg.smugmug.com](http://bhg.smugmug.com). 35-P-TFN-NC 58577

**Classified Deadline**

9 a.m. Thursday



# HORMEL NATURAL CHOICE & KRAUSE'S MARKET

## SALE GOOD THROUGH NOVEMBER 17TH • WHILE SUPPLIES LAST



**Bone-In  
Pork Butts**  
In A Bag

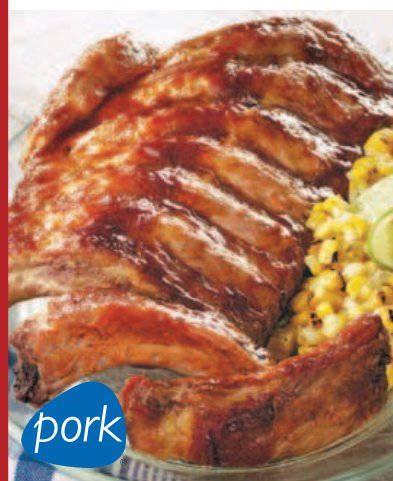
**99¢** lb



**Bone-In  
Country Style  
Ribs**  
Family Pack **\$1.69** lb



**Boneless  
Pork Loin**  
Fresh **\$1.88** lb



**Spare  
Ribs**  
Fresh **\$1.99** lb



**Baby Back  
Ribs**  
Fresh **\$2.99** lb



**Boneless  
Pork Butts**  
Fresh **\$1.69** lb



**Assorted  
Bone-In  
Pork Chops**  
Family Pack **\$1.58** lb

**SAVE THE DATE | HAZEN BOTTLE SHOP • Annual Fall Wine Tasting  
November 14 at the Hazen Golf Course**

# KRAUSE'S

Hazen, ND  
748-2444

Garrison, ND  
463-2215

Washburn, ND  
462-8561

**Market**



**CHECK OUT  
OUR AD  
ONLINE AT  
KRAUCESSUPERVALU.COM**